

Name: Index no

School: Candidate's sign

Date:

443/2
AGRICULTURE
PAPER 2
JULY /AUGUST 2011
TIME: 2 HOURS

BUSIA DISTRICT JOINT EVALUATION TEST

Kenya Certificate of Secondary Education (K.C.S.E.)

Agriculture
Paper 2

INSTRUCTIONS TO CANDIDATES:

- Write your **name** and **index number** in the spaces provided.
- This paper consists of **three** section **A,B** and **C**
- Answer **all** the questions in sections **A** and **B**
- Answer any **two** questions in section **C**.
- Answers should be written in the spaces provided in this booklet.

For Examiner's Use Only:

SECTION	QUESTIONS	MAXIMUM SCORE	CANDIDATE'S SCORE
A	1-15	30	
B	16-19	20	
C	20-22	20	
		20	
	TOTAL SCORE	90	

This paper consists of 8 printed pages. Candidates should check to ascertain that all papers are printed as indicated and that no questions are missing.

SECTION A (30 MARKS)

Answer all the questions in this section the spaces provided

1. State **one** use of each of the following tools
(i) Chaff cutter..... (½ mk)
(ii) Augerbit..... (½ mk)
2. State **four** factors considered when siting an apiary. (2mks)
.....
.....
.....
3. Give **four** predisposing factors of foot rot disease in sheep. (2mks)
.....
.....
.....
- 4.(i) What is selection in livestock production. (1mk)
.....
(ii) State **three** methods used in selection of livestock (1½mks)
.....
.....
.....
5. Give **two** functions of drones in a colony of bees. (1mk)
.....
.....
6. State **three** factors a farmer would consider when sourcing day old chicks. (1½mks)
.....
.....
.....
7. Give **four** disadvantages of plunge dips. (2mks)
.....
.....
.....
8. Name the tools used to perform the following activities.
(a) Making holes for transplanting. (1mk)
.....
(b) Trimming elongated or overgrown hooves in livestock (1mk)
.....

(c) Driving and removing nails from wood. (1mk)

.....

9. State **four** functions of water to the body of an animal. (2mks)

.....

.....

.....

10. Give **four** reasons why steaming up is important in a dairy cow. (2mks)

.....

.....

.....

11. Define the following terms as used in expressing feed values.

(i) Digestibility (1mk)

.....

(ii) Starch equivalent. (1mk)

.....

12. State **four** reason for maintaining and caring for farm tools and equivalent. (2mks)

.....

.....

.....

13. List **four** structural requirements of a grain store (2mks)

.....

.....

.....

14. List **four** ways in which vaccines may be administered to an animal. (2mks)

.....

.....

.....

15. State **three** functions of feed additives in livestock production. (1½mks)

.....

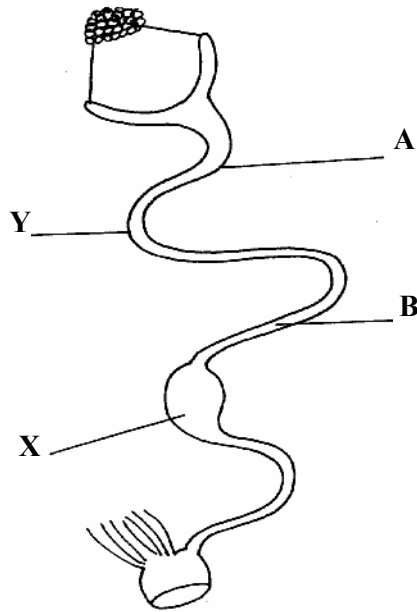
.....

.....

SECTION B: (20 MARKS)

Answer all the questions in this section in the spaces provided

16. Below is a diagram representing the reproductive system in poultry. Study it and answer the questions.



(a) Name the parts labelled A, X, and Y (1½mks)

A.....

X.....

Y.....

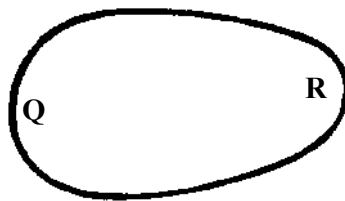
(b) Name **two** substances added to the egg at section labeled Y. (1mk)

.....

(c) How long does the egg stay at section labeled X? (½mk)

.....

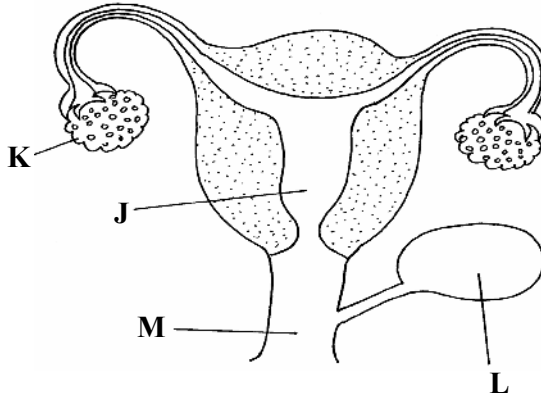
(d) Below is a diagram of an egg



Which part of the egg represented by the letters Q and R would come out first during the laying process. (1mk)

.....

17. The diagram below shows the reproductive system of a cow. Study it and answer the questions that follow:-



(a) Name the parts labeled (2mks)

K.....

L.....

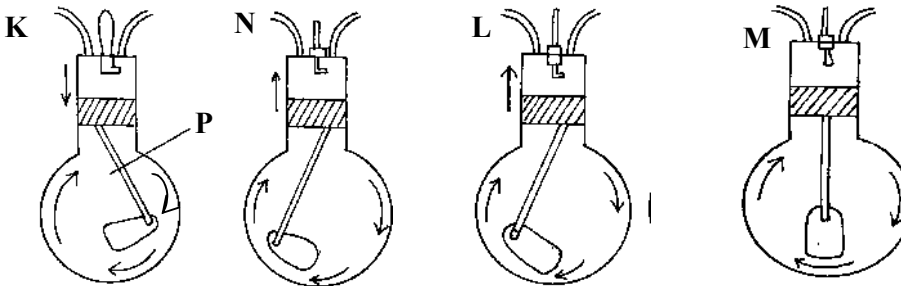
M.....

J.....

(b) Name the **three** hormones that control the oestrus cycle in a dairy cattle. (3mks)

.....

18. The diagrams below illustrates the four cycle of a tractor engine. Study them carefully and answer the questions that follow.



(a) Identify each of the four strokes illustrated in the diagrams. (4mks)

K.....

L.....

M.....

N.....

(b) Name the part labeled **P**. (1mk)

.....

19. (a) Give **three** reasons for breeding bees. (1½mks)

.....
.....
.....

(b) State **five** reasons why bees swarm. (2½mks)

.....
.....
.....
.....

(c) List **four** tools/equipments used in harvesting honey. (2mks)

.....
.....
.....

SECTION C: (40 MARKS)

*Answer any **two** questions in this section in the spaces provided after question 22.*

20 (a) Describe factors that a farmer should consider when constructing farm structures. (8mks)

(b) Explain the uses of fences in a farm. (8mks)

(c) State **four** methods of reinforcing barbed wire fence to make them last longer. (4mks)

21. (a) discuss brucellosis under the following sub –topics

(i) Causal organism in cattle . (1mk)

(ii) Symptoms (4mks)

(iii) Control (5mks)

(b) Outline the possible causes of low libido in bucks. (5mks)

(c) Describe the management activities a poultry farmer would carry out to reduce stress in a flock of layers.

22. (a) List any **two** tractor drawn implements which requires the use of both the three-point hitch and the power take off (P.T.O) shaft. (2mks)

(b) State **six** maintenance practices carried out on a disc plough. (6mks)

(c) Compare the operational differences between a disc and mould board plough. (12mks)

.....
.....
.....
.....

