

441/2
HOMESCIENCE
(CLOTHING AND CONSTRUCTION)
PAPER 2
JULY/AUGUST 2011
TIME: 2 ½ HOURS

BUSIA DISTRICT JOINT EVALUATION TEST

Kenya Certificate of Secondary Education (K.C.S.E)

Home science
Paper 2

INSTRUCTIONS TO CANDIDATES

A pattern for a child's top is provided. You are advised to study the layout and the instructions carefully before you begin the test.

Materials provided

1. Pattern pieces:
 - A Bodice front
 - B Bodice back
 - C Collar
 - D. Back neck facing
 - E .Sleeve
2. Plain cotton poplin fabric 70cm by 91cm .
3. Thread to match the fabric.
4. Button

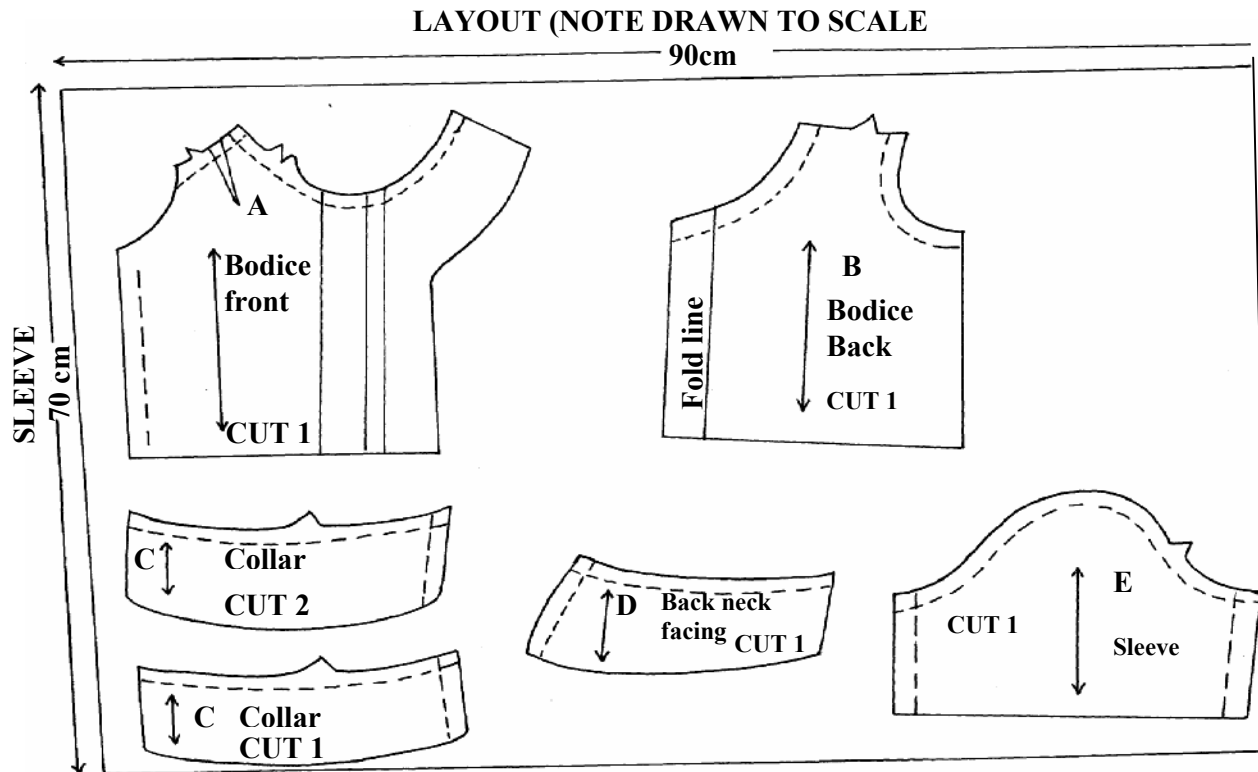
THE TEST

Using the materials provided, cut out and make up the left half of the child's top show the following processes.

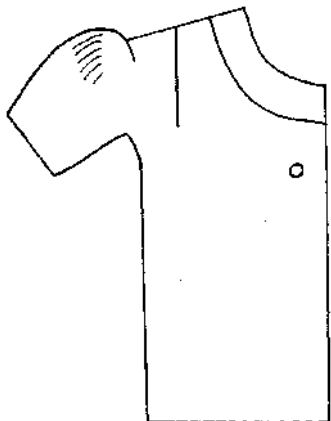
- a) Making of the shoulder dart..
- b) Making of the French seam..
- c) The joining of the neck facing to the front facing..
- d) Preparation of the interfaced collar.
- e) Attaching the collar using the joint facing .
- f) The working of the side seam using an open seam.

- g) The working of the underarm open seam
- h) The preparation and attachment of a gathered sleeve
- i) The fixing of a button on the blouse.

At the end of the examination, firmly sew onto your work, on a single fabric, a label bearing your name and index number. Remove the needle and pins on your work, then fold your work neatly and place it in the envelope provided. Do not put scraps of fabric in the envelope.



FRONT VIEW



BACK VIEW

