

ALLIANCE HIGH SCHOOL
NAME _____ ADW.NO. _____
Class _____

AGRICULTURE PAPER 2
443/2
2 ½ HOURS

INSTRUCTIONS.

The paper has 3 sections A,B and C. Answer all questions on section A and B. Answer any two questions on section.C.

FOR EXAMINER'S USE ONLY

Section	Questions	Maximum score	Candidate's Score
A	1 – 16	30	
B	17 – 23	30	
C	24 25 26	20 20 20	
TOTAL		100	

SECTION A (30 MARKS)

1. State any 4 advantages of using animal power. (2mks)

2. What is cropping. (½ mk)

3. State one breed of hairy goat. (½ mk)

4. State 2 reasons for egg turning during incubation. (1mk)

5. 4 practices carried out on fencing posts. (2mks)

6. Differentiate between mothering ability and prolifically. (1mk)

For More Free KCSE Past papers visit www.freekcsepastpapers.com

For More Free KCSE past papers visit www.freekcpastpapers.com

7. State 4 predisposing factors to mastitis. (2mks)

8. State any 4 disadvantages of nomadic-pastoralism. (2mks)

9. State any 2 agro forestry trees used as a source of fodder in livestock production. (1mk)

10. Give 3 maintenance practices carried out on ox-plough. (1½mks)

11. (a) Which livestock disease is transmitted by the following ticks? (2mks)

- (i) Blue tick (*Boophilus decoloratus*)
- (ii) Brown ear tick (*Rhipicephalus appendiculatus*)

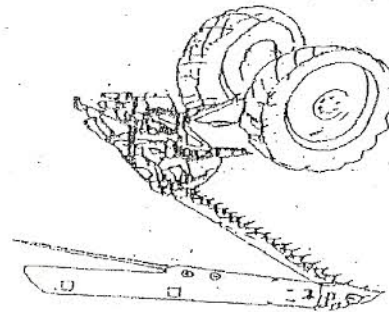
(b) Which of the two ticks is a one host tick? (1mk)

12. State any 3 deficiency symptoms of vitamin A in animal's body. (1½mks)

13. State four functions of lubricating system in a tractor.

(2mks)

14. The diagram below is a tractor drawn implement. Study it and answer the questions below.



(i) Identify the implement.

(½ mk)

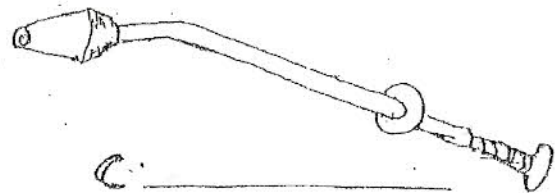
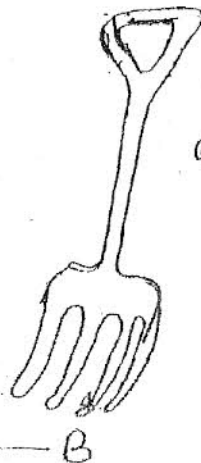
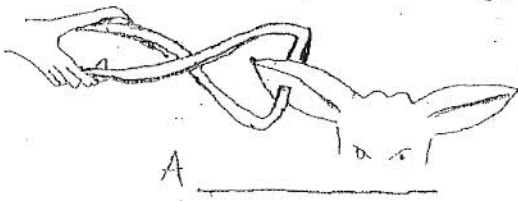
(ii) State the method of power transmission for operating the implement. (½ mk)

(iii) State any 4 maintenance practices of the implement.

(2mks)

15. (a) Identify the following farm tools.

(1½ mks)



(b) Give 4 reasons why bees abscond from bee hive.

(2mks)

6. (i) State the 2 functions of each of the following parts of an egg.

(i) Albumen

(1mk)

(ii) Shell membrane.

(1mk)

(iii) What is the function of carburetor in tractor engine?

(½ mk)

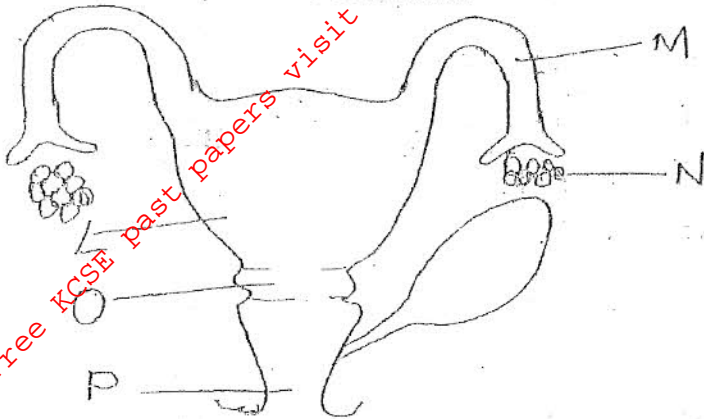
SECTION B (30MKS)

17. Explain the term production ration as used in livestock production. (1mk)

18. A farmer wanted to prepare a 200kg of calf rearing ration containing 20% DCP. Use Pearson square to calculate the amount of maize (10% DCP) and sunflower (35% DCP) the farmer would require to prepare the ration. (Show your working)

(4mks)

19. The diagram below shows reproductive system of a cow. Study it and answer the questions that follow.



(i) Name the parts labeled.

(5mks)

L

M

N

O

(ii) State the functions of parts labeled M and N.

(2mks)

(iii) State any 2 advantages of embryo transplant.

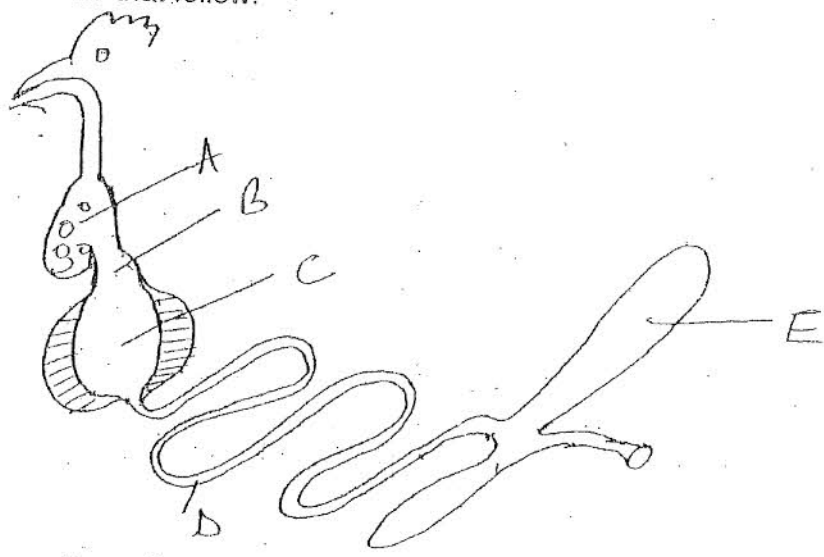
(2mks)

20. Briefly explain the process of milk letdown.

(5mks)

21. Differentiate between selection and breeding. (2mks)

22. Below is a digestive system of poultry. Study it and answer the questions that follow.



(i) Name the parts labeled (5mks)

- A
- B
- C
- D
- E

- (ii) Name the function of parts labeled. (3mks)
- A
- C
- E

SECTION C (40MKS)

24. (a) Discuss Newcastle disease under the following subheadings.

- (i) Casual organism. _____
- (ii) Signs of attack (symptoms) (7mks)
- (iii) Control measures. (2mks)
- (iv) Outline the procedure of carrying out machine milking. (8mks)
- (v) Give two harmful effects of pulling teats during milking. (2mks)

25. Describe the management of dairy calf by bucket feeding method from birth to weaning. (20mks)

26. (a) (i) Give the differences between four-stroke and two stroke petrol engine. (5mks)

(ii) Describe the functions of a gear box in a tractor. (7mks)

(b) Describe functions of the following parts of transmission system. (8mks)

(i) Clutch

(ii) Gearbox.

(iii) Differential

(iv) Final drive