

NAME: INDEX NO:

SCHOOL: SIGNATURE:

DATE :

443/2
AGRICULTURE
PAPER 2
JULY / AUGUST 2013
TIME: 2 HOURS

NANDI CENTRAL DISTRICT JOINT MOCK 2013

Kenya Certificate of Secondary Education (K.C.S.E.)
AGRICULTURE
PAPER 2
TIME: 2 HOURS

INSTRUCTIONS TO CANDIDATES:

- Write your name and Index number in the spaces provided above.
- Sign and write the date of examination in the spaces provided above.
- This paper consists of THREE sections A, B and C.
- Answer ALL questions in Section A and B.
- Answer any TWO questions in section C.
- Answers should be written in the spaces provided.
- This paper consists of 10 printed pages.
- Candidates should check the question paper to ascertain that all the pages are printed as indicated and no questions are missing.

FOR EXAMINER'S USE ONLY

SECTION	QUESTIONS	MAX. SCORE	CANDIDATE SCORE
A	1 – 15	30	
B	16 – 18	20	
C	19 - 21	20	
		20	
Total Score		90	

SECTION A (30 MARKS)

Answer ALL Questions in the Spaces Provided

1. (a) Name a breed of sheep with a lambing percentage of above 125% and whose fleece may be inferior due to black features. (½mk)

.....

- (b) Name a goat breed which can be used for production of mohair. (½mk)

.....

2. Differentiate between the following tools:

- (a) Baslard file and rasp file. (1mk)

.....

.....

.....

- (b) Coping saw and hack saw.

.....

.....

3. List **two** equipment used in handling cattle during Agricultural exhibition. (2mks)

.....

.....

4. State **four** methods of maintaining good health in livestock. (2mks)

.....

.....

.....

.....

5. (a) State **four** signs of external parasite infestation. (2mks)

.....

.....

.....

.....

(b) State **four** non-chemical methods of controlling ticks. (2mks)

.....

.....

.....

.....

6. (a) State **four** characteristics of livestock roughage feedstuff. (2mks)

.....

.....

.....

.....

(b) Give **four** functions of proteins in an animal's body. (2mks)

.....

.....

.....

.....

7. (a) State **four** advantages of using corrugated iron sheets for roofing instead of asbestos. (2mks)

.....

.....

.....

.....

(b) Give **two** reasons for spreading a polythene paper in the slab of farm buildings. (1mk)

.....

.....

8. (a) State **four** roles played by engine oil in tractor engine. (2mks)

.....

.....

.....

.....

(b) State **four** practices through which a farmer would ensure that no engine knock occurs in a tractor. (2mks)

.....

.....

.....

.....

9. State **two** factors that influence the respiration rate in animals. (1mk)

.....

.....

10. State **four** practices that ensure maximum harvest of fish. (2mks)

.....

.....

.....

.....

11. State **four** reasons why farmers herd livestock. (2mks)

.....

.....

.....

.....

12. State **one** farm implement which can be used in both primary and secondary operations. (½mk)

.....

13. Give a reason why Irish potatoes should not be fed to non-ruminants. (½mk)

.....

.....

14. (a) What is hybrid vigour? (½mk)

.....

.....

.....

For More Free KCSE past papers visit www.freekcpastpapers.com

(b) Give **two** instances when hybrid vigour may be lost.

(1mk)

.....
.....

15. State **three** reasons why farmers give milk to kids using artificial methods.

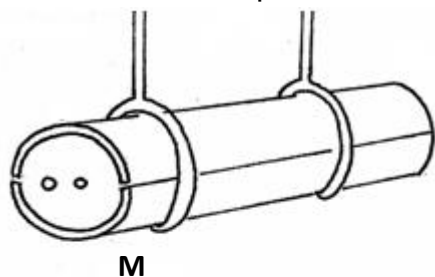
(1½mks)

.....
.....
.....

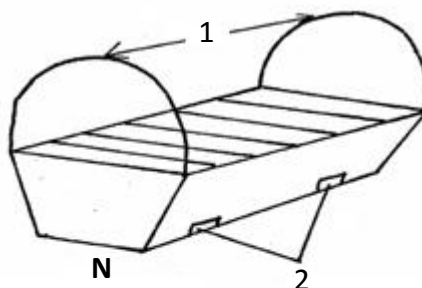
SECTION B (20 MARKS)

Answer all questions in the spaces provided in this section

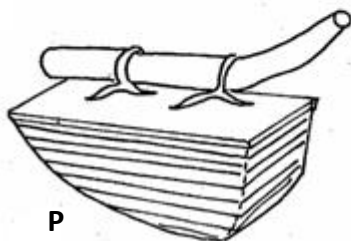
16. Diagrams **M**, **N**, **P** and **Q** show some structures used in apiculture. Use them to answer the questions that follow:



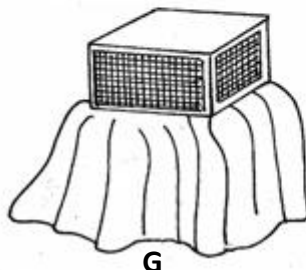
M



N



P



Q

(a) Identify the structures labeled **M**, **N**, **P** and **Q**.

(2mks)

M.....
N.....
P.....
Q.....

(b) State the uses of equipment **P** and **Q**.

(2mks)

P.....
Q.....

(c) State **one** advantage structure **N** has over structure **M**.

(1mk)

.....

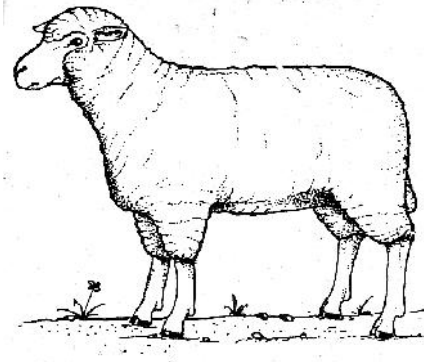
(d) State the uses of the parts labeled 1 and 2 on structure N.

(2mks)

.....

.....

17. Study the diagram below and answer the questions that follow.



(a) Outline the reason for raddling.

(2mks)

.....

.....

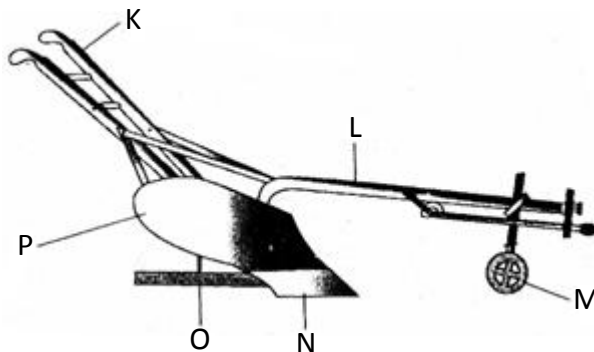
(b) Using letter **R**, indicate on the diagram, the site of ringing.

(1mk)

(c) Using letter **C**, show the position of breeding chutes.

(1mk)

18. Below is an illustration of a farm implement. Study it carefully and answer the questions that follow.



(a) Identify the farm implement.

(1mk)

.....

(b) Name the parts labeled **L**, **M**, **O** and **P**.

(4mks)

L.....

M.....

O.....

P.....

(c) Give one function of the parts **K, M, N** and **P**.

(4mks)

K.....

M.....

N.....

P.....

(d) Give the adjustment on the store implement to ensure deep ploughing with a wide slice.

(2mks)

.....

.....

SECTION C

Answer any two questions in the spaces provided

19. Using appropriate illustration, describe the process of egg formation in a layer. (20mks)

20. (a) Describe hand milking in a dairy cow. (12mks)

(b) Explain the practices observed in clean milk production. (8mks)

21. (a) Discuss Pneumonia in calves under the following sub-headings:

(i) Predisposing factors. (3mks)

(ii) Symptoms (5mks)

(iii) Control measure (3mks)

(b) Name and describe features of an ideal calf pen. (9mks)

.....

.....

.....

.....

.....

.....

.....

.....

.....

.....

.....

.....

.....

.....

.....

.....

.....

.....

.....

.....

.....

.....

For More Free KCSE past papers visit www.freekcsепastpapers.com

For More Free KCSE past papers visit www.freekcsepastpapers.com

For More Free KCSE past papers visit www.freekcsепastpapers.com