

441/2
HOMESCIENCE
PAPER 2
PRACTICAL
(CLOTHING AND TEXTILE)
JULY / AUGUST 2013
TIME: 2 ½ HOURS

NANDI CENTRAL DISTRICT JOINT MOCK 2013

Kenya Certificate of Secondary Education (K.C.S.E.)
HOMESCIENCE
PAPER 2
TIME: 2 ½ HOURS

A pattern of a child's dress bodice is provided. You are advised to study the sketches, instructions and the layout carefully before you begin the test.

1. MATERIALS PROVIDED

- A. Front bodice
 - B. Back bodice
 - C. Sleeve
 - D. Front neck facing
 - E. Back neck facing
 - F. Cuff
 - G. Sleeve opening strip.
2. Plain lightweight cotton fabric 65 cm long by 90cm wide
 3. Sewing cotton thread to match the fabric.
 4. One button 1cm in diameter
 5. A zip 15cm long
 6. One large envelope

THE TEST

Using the materials provided, cut out and make the left half of a child's dress bodice to show the following:-

1. The working of a machine full seam at the shoulder.
2. The working of an open seam at the side.
3. Attaching of a zip using concealed method.
4. Joining the back and front facings and neatening the free edge.
5. Attaching the facings onto the neckline.
6. Preparation of the sleeve to include:
 - (i) The making of the continuous straight strip opening at the sleeve.
 - (ii) The working of a French seam at the underarm.
 - (iii) The preparation and attaching of the sleeve cuff and holding it using slip hemming (slip hem half the band).
 - (iv) The preparation and attaching of the sleeve to the bodice and leaving the seam untrimmed and un-neatened.
 - (v) The making of the buttonhole and attaching the button.

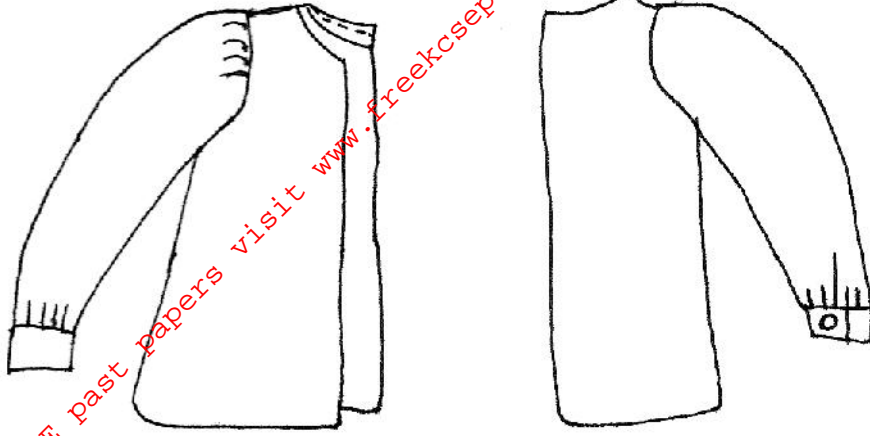
At the end of the examination, firmly sew onto your work on a single fabric a label bearing your **Name** and **index number**.

Remove needles and pins from your work, then fold your work neatly and place it in the envelope provided.

Do not put scraps of fabric in the envelope.

FRONT VIEW

BACK VIEW



LAYOUT (NOT DRAWN ON SCALE)

