

NAME: INDEX NO:

CANDIDATE'S SIGNATURE:

DATE :

443/2
AGRICULTURE
PAPER 2
JULY / AUGUST 2013
TIME: 2 HOURS

NANDI NORTH DISTRICT JOINT MOCK 2013

Kenya Certificate of Secondary Education (K.C.S.E.)
AGRICULTURE
PAPER 2
TIME: 2 HOURS

INSTRUCTIONS TO CANDIDATES:

- (a) Write your name and Index number in the spaces provided above.
- (b) Sign and write the date of examination in the spaces provided above.
- (c) This paper consists of THREE sections A, B and C.
- (d) Answer ALL questions in Section A and B.
- (e) Answer any TWO questions in section C.
- (f) Answers should be written in the spaces provided.
- (g) This paper consists of 10 printed pages.
- (h) Candidates should check the question paper to ascertain that all the pages are printed as indicated and no questions are missing.

FOR EXAMINER'S USE ONLY

SECTION	QUESTIONS	MAX. SCORE	CANDIDATE SCORE
A	1 – 16	30	
B	17 – 22	20	
C	23 - 25	20	
		20	
Total Score		90	

SECTION A (30 MARKS)

Answer ALL Questions in the Spaces Provided

1. (a) What is a notifiable disease? (1mk)

.....
.....

- (b) Name **two** notifiable diseases of cattle. (1mk)

.....

2. List any **four** farm tools and equipment that are complementary in use. (2mks)

.....
.....
.....

3. Give **two** characteristics that make indigenous cattle better suited to marginal areas than exotic cattle. (2mks)

.....
.....

4. Give **four** similarities between the importance of good creep feed and colostrum. (4mks)

.....
.....
.....

5. Give **two** examples of light breeds of poultry. (1mk)

.....
.....

6. A farmer intends to prepare 600kg of feed containing 20% DCP for chicks using feedstuffs which contains 18% DCP and N which contains 40% DCP, using a pearson's square method, calculate how much of Q and N will be needed. (5mks)

.....
.....
.....
.....
.....
.....
.....

For More Free KCSE Past papers visit www.freekcsepapers.com

7. Differentiate between pen mating and flock mating in poultry. (2mks)

.....
.....

8. State **four** signs of heat in pigs. (2mks)

.....
.....
.....

9. Give **two** reasons why teaser rams are introduced to a flock of Ewes some weeks before tugging. (2mks)

.....
.....

10. Name **two** livestock diseases controlled through artificial insemination. (1mk)

.....
.....

11. What characteristics of gizzard of a cock enable it to digest food? (1mk)

.....
.....

12. Give **two** reasons for seasoning timber before its used for construction. (2mks)

.....
.....

13. Give **two** uses of droppers in a barbed wire fence. (1mk)

.....
.....

14. State **two** factors which determine the amount of feeds given to an animal. (1mk)

.....
.....

15. State **two** factors that lower quality of concrete. (1mk)

.....
.....

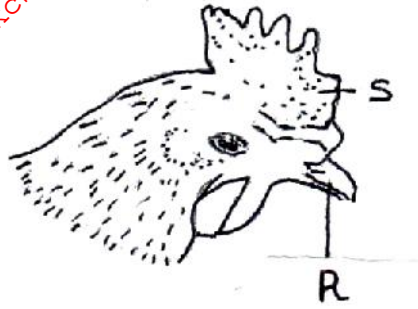
16. Give **two** maintenance practices of a tractor battery. (1mk)

.....
.....

SECTION B (20 MARKS)

Answer all questions in the spaces provided in this section

17. Use the diagram given below to answer the questions that follow:-



(a) (i) Name the routine practice carried out on the part labeled R. (1mk)

.....

(ii) Give **two** reasons for carrying out the practice named in (a) (i) above.

(2mks)

.....
.....
.....

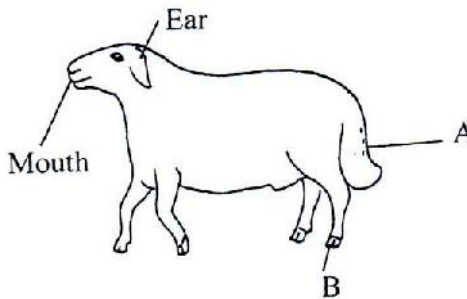
(b) (i) Name **one** disease that affects the part labeled S. (1mk)

.....

(ii) State **two** control measures of the disease named in (b) (i) above. (1mk)

.....
.....

18. Study the diagram of a sheep shown below carefully and answer the questions that follow.



(i) What operation is carried out on the part labeled A. (1mk)

.....
.....

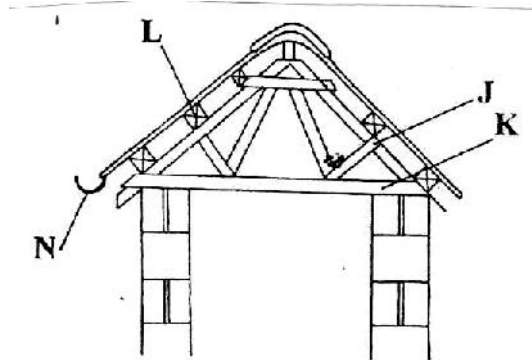
(ii) Give **two** reasons for carrying out the operation in (i) above. (1mk)

.....
.....

(iii) At what age should the above operation be carried out? (1mk)

.....
.....

19. Study the illustration of a farm structure below and answer the questions that follow:



(a) Identify the parts labeled: (2mks)

J.....

K.....

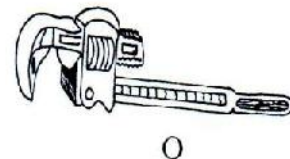
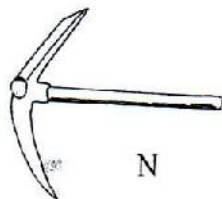
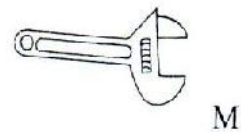
L.....

N.....

(b) State **two** uses of part labeled L. (1mk)

.....
.....

20. Below are farm tools, study them and answer the questions below:-



(a) Identify the tools M, N. (2mks)

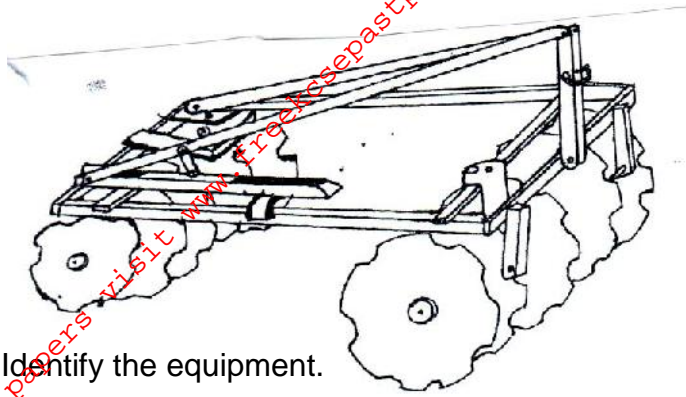
M.....

N.....

(b) Give **one** functional advantage of O over tool L. (1mk)

.....

21. Below is a diagram of a farm equipment.



(i) Identify the equipment. (½ mk)

.....

(ii) State **one** function of the toothed notches. (½ mk)

.....

(iii) State **one** way of increasing the depth of penetration of the equipment. (1mk)

.....

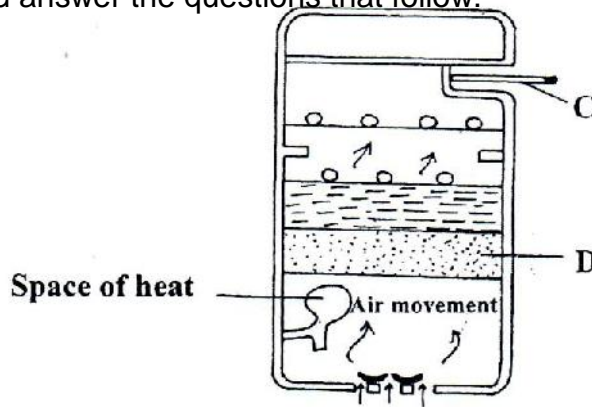
(iv) State **four** maintenance practices carried out on the equipment shown. (2mks)

.....

.....

.....

22. The illustration below represents an equipment used in poultry production. Study them carefully and answer the questions that follow.



(i) Identify the equipment. (½ mk)

.....

(ii) Identify the parts labeled. (1mk)

C.....

D.....

(iii) Why is it important to turn the eggs 180° every 6 – 8 hours? (½mk)

.....

For More Free KCSE past papers visit www.freekcsepapers.com

.....

.....

.....

.....

.....