

Name..... Index No:.....

231/1  
BIOLOGY  
PAPER 1  
(THEORY)  
JULY/AUGUST 2014  
TIME: 2 HOURS

Candidate's Signature .....

Date: .....

For More Free KCSE Past papers Visit [www.freekcsepastpapers.com](http://www.freekcsepastpapers.com)

# HOMA-BAY SUB-COUNTY JOINT EVALUATION EXAM

*Kenya Certificate of Secondary Education (K.C.S.E.)*

231/1  
Biology  
Paper 1

## INSTRUCTIONS TO CANDIDATES

- Write your **name** and **index number** in the spaces provided above
- **Sign** and write the **date** of examination in the spaces provided.
- Answer **all** the questions in the spaces provided.

### For Examiners Use Only

| Question | Maximum score | Candidate's score |
|----------|---------------|-------------------|
| 1- 30    | 80            |                   |

*This paper consists of 11 printed pages. Candidates should check to ascertain that all pages are printed as indicated and that no questions are missing.*

For More Free KCSE Past papers visit [www.freekcssepastpapers.com](http://www.freekcssepastpapers.com)

1. Give **three** examples of continuous variations in human beings (3mks)

.....  
.....  
.....

2. (i) Name the main product of the dark stage of photosynthesis (1mk)

.....

(ii) State the importance of chlorophyll in photosynthesis (1mk)

.....  
.....

3. (a) Define the term balanced diet (1mk)

.....  
.....  
.....

(b) State the importance of roughage in a diet (1mk)

.....

4. (a) How is the *fovea centralis* adapted for its function in human eye (1mk)

.....  
.....

(b) A person was not able to see far objects clearly but could view near objects clearly. Name the eye-defect the person had (1mk)

.....  
.....

(c) How can the defect be corrected (1mk)

.....

5. (a) What is fertilization ? (2mks)

.....  
.....

(b) Explain how double fertilization takes place in plants (2mks)

.....  
.....

6. In an experiment, the pituitary gland of a rat was removed

(a) State the effect this will have on the quantity of urine produced by the rat. (1mk)

.....  
.....

(b) Give a reason for your answer in (a) above (1mk)

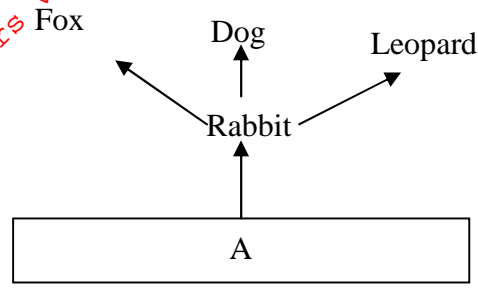
.....

For More Free KCSE Past papers Visit [www.freekcsepapers.com](http://www.freekcsepapers.com)

7. State two importance of sexual reproduction (2mks)

.....  
.....  
.....

8. The diagram below show part of a food relationship in an ecosystem



(a) Name the food relationship shown in the diagram (1mk)

(b) Name the trophic level occupied by organism A (1mk)

(c) What is the main source of energy in the ecosystem shown in the diagram above? (1mk)

.....  
.....  
.....  
.....

9. State the function of the diaphragm in the light microscope (1mk)

.....

10. Explain the role of antidiuretic hormone when there is less water in the human body (3mks)

.....  
.....  
.....

11. State the function of each of the following organelles

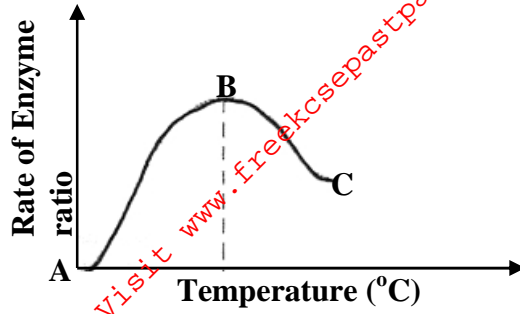
(a) Centrioles (1mk)

.....  
.....

(b) Golgi body (1mk)

.....  
.....

12. The graph below shows action of heat on enzyme reaction



(a) What is the effect of temperature on the rate of enzyme reaction? (2mks)

.....  
.....

(b) State the relationship between temperature and enzyme activity (2mks)

.....  
.....

13. Distinguish between divergent and convergent evolution (2mks)

.....  
.....

14. State **three** distinguishing features for members of *pylum chordate* (3mks)

.....  
.....

15. (a) State the reasons for the following adaptations of the xylem vessels (2mks)

(i) Narrow lumen:

.....  
.....

(ii) Lack of cross walls

.....  
.....

(b) State **two** distinguishing features of the phloem sieve tubes (2mks)

.....  
.....

16. State the economic importance of the following plant excretory products

(a) Caffeine (2mks)

.....  
.....

(b) Quinine (1mk)

.....  
.....

17. Explain why a baby loses more heat per unit weight than an adult when exposed to the same environmental conditions (2mks)

.....  
 .....

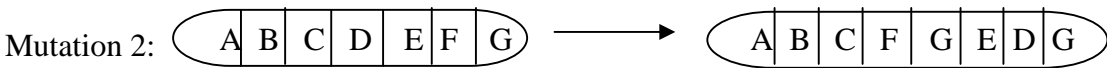
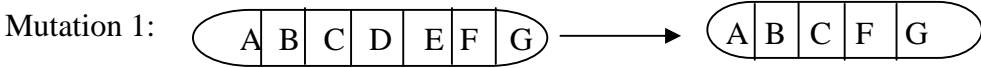
18. During oxidation of certain food substances, the respiratory quotient was found to be 0.718  
 (i) Name the type of food substance being oxidized (1mk)

.....

(ii) State **two** advantages of using the food substances named (2mks)

.....  
 .....

19. The diagram below shows various types of gene mutations



(c) Identify the type of gene mutation shown above (2mks)

Mutation 1

.....

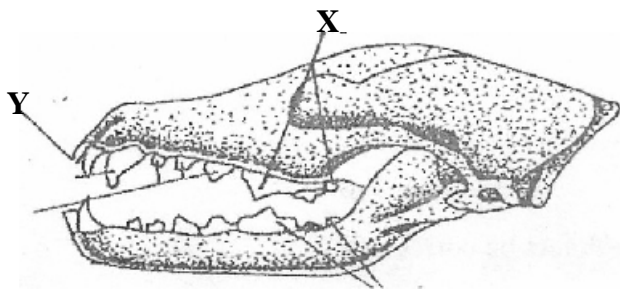
Mutation 2

.....

(d) Distinguish between gene and chromosomal mutations (2mks)

.....  
 .....

20. The diagram below shows dentition of a dog



(a) (i) Name the part labeled X (1mk)

.....

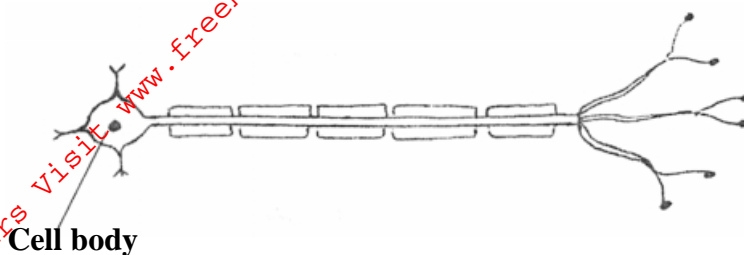
(ii) Give a reason for your answer in a (i) above (1mk)

.....  
 .....

(b) State how part labeled Y is adapted to its function (1mk)

.....

21. The diagrams below represents a nerve cell



(a) Identify the nerve cell (1mk)

.....

(b)(i) Give a reason for your answer in (a) above (1mk)

.....

(iii) Show by use of an arrow the direction of flow of the nerve impulses

.....

22. (a) State the importance of the following features in gaseous exchange

(i) Cartilage in the trachea (1mk)

.....

(ii) Moisture on the surface of alveoli. (1mk)

.....

(b) Name **two** sites where gaseous exchange takes place in terrestrial plants (2mks)

.....

.....

23. During germination and early growth, the dry weight of endosperm decreases while that of the embryo increases. Explain (2mks)

.....

.....

24. The table below shows the percentage composition of blood plasma and urine for four substances

| Component substance | Blood plasma % | Urine % |
|---------------------|----------------|---------|
| Urea                | 0.03           | 2.0     |
| Water               | 90             | 90      |
| Plasma proteins     | 8.0            | 0       |
| Glucose             | 0.1            | 0       |

(a) Account for the absence of plasma proteins in urine (1mk)

.....  
.....

(b) Urea concentration being greater in the urine than in the blood plasma (1mk)

.....  
.....

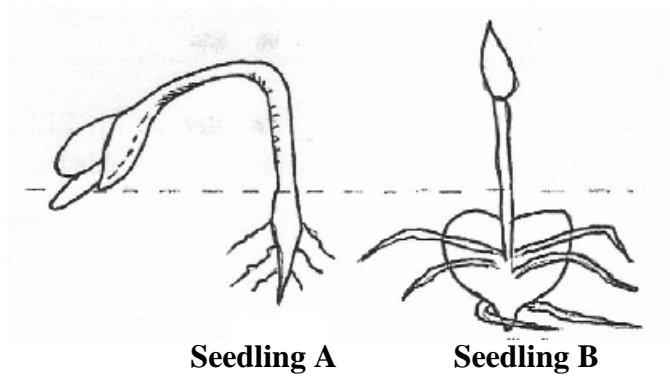
25. State **three** advantages of asexual reproduction in organisms (3mks)

.....  
.....  
.....

26. Explain how the human eye accommodates an image from a far distant object (2mks)

.....  
.....

27. The diagram below represents a stage of growth in two different seeds



(a) Identify the type of germination exhibited by seedlings A and B (2mks)

Seedling A

.....

Seedling B

.....

(f) State the role of oxygen in germination (1mk)

.....

28. In view of modern genetics explain why Lamarckian theory is unacceptable. (2mks)

.....  
.....

29. Define the following terms used in ecology (4mks)

(i) Biosphere

.....

(ii) Population

.....  
(iii) Synecology

.....  
(iv) Carrying capacity

.....

For More Free KCSE Past papers Visit [www.freekcsepastpapers.com](http://www.freekcsepastpapers.com)