

NAME..... INDEX NO.....

SCHOOL..... CANDIDATE'S SIGNATURE.....

DATE.....

443/2  
AGRICULTURE  
PAPER 2  
JULY/AUGUST 2014  
TIME: 2 HOURS

## KURIA WEST SUB-COUNTY JOINT EXAMINATION - 2014

Kenya Certificate of Secondary Education  
AGRICULTURE  
PAPER 2  
TIME: 2 HOURS

### INSTRUCTIONS TO CANDIDATES:

- Write your name and index number in the spaces provided above.
- Sign and write the date of examination in the spaces provided above.
- This paper consists of **THREE** Sections **A**, **B** and **C**.
- Answer all questions in Section **A** and **B**.
- Answer two questions in Section **C** in the spaces provided.

### FOR EXAMINER'S USE ONLY

Section	Question	Maximum Score	Candidate's Score
<b>A</b>	<b>1 - 18</b>	<b>30</b>	
<b>B</b>	<b>19 - 21</b>	<b>20</b>	
<b>C</b>	<b>22 - 24</b>	<b>20</b>	
		<b>20</b>	
<b>Total Score</b>		<b>90</b>	

1. Give **two** notifiable diseases in cattle. (1mk)

---

---

---

2. List **four** characteristics of a non-layer in poultry. (2mks)

---

---

---

---

3. Differentiate between an Essex saddle back and Wessex saddle back. (1mk)

---

---

---

---

4. Give **two** functions of reticulum in the process of food digestion. (1mk)

---

---

---

5. State the function of a carburetor in fuel system. (1mk)

---

---

---

6. List **five** symptoms attack of livestock by roundworms (Ascaris). (2½mks)

---

---

---

---

---

7. Name the structure that is used to ensure that honeycomb and brood combs are found in different chambers in the hive. (1mk)

---

8. Differentiate between in breeding and out breeding. (1mk)

---

---

---

---

9. Give **three** methods of harnessing tractor power. (1½mks)

---

---

---

10. Distinguish the functional difference between across cut saw and a rip saw. (1mk)

---

---

---

11. Give **three** reasons why ewes disown lambs. (1½mks)

---

---

---

12. Give four factors to consider when selecting goats for breeding. (2mks)

---

---

---

---

13. State **four** conditions that can make a cow to withhold milk during milking. (2mks)

---

---

---

---

14. List **six** management practices carried out on fish pond for optimum fish production. (3mks)

---

---

---

---

---

---

15. Give **five** predisposing factors of mastitis disease in cattle. (2½mks)

---

---

---

---

---

16. Give the function of the following parts of a reciprocating mower. (2mks)

(a) Pitman \_\_\_\_\_

---

(b) Shoe \_\_\_\_\_

---

(c) Swath board \_\_\_\_\_

---

(d) Cutter bar \_\_\_\_\_

---

17. A dairy cow under zero grazing system weighs 700kg. Calculate how much of dry matter it takes given that it take 2.5kg for every 100kg live weight. (2mks)

18. List **four** factors that influence the quality of honey. (2mks)

---

---

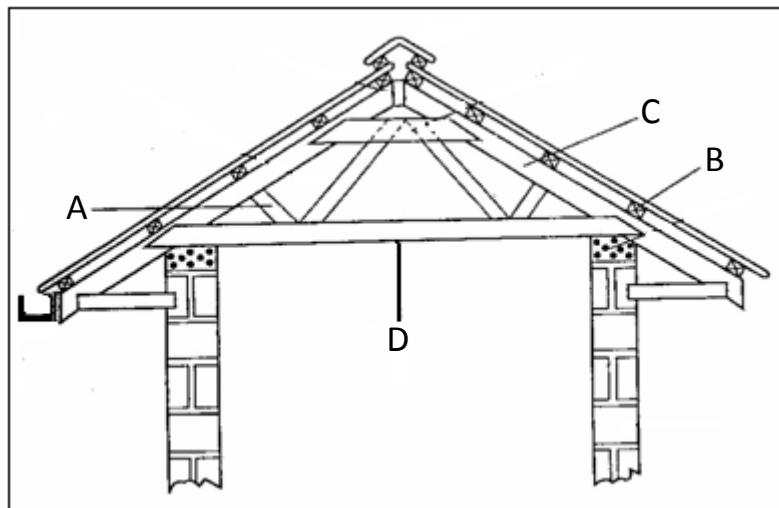
---

---

**SECTION B: (20 MARKS)**

Answer all the questions in this section in the spaces provided.

19. (a) The diagram **below** represents roof of a building.



- (i) Identify the parts labeled **A, B, C**. (3mks)

**A** \_\_\_\_\_

**B** \_\_\_\_\_

**C** \_\_\_\_\_

(ii) Give **four** factors considered when siting farm buildings and structures. (2mks)

---

---

---

---

(b) Explain **four** factors which would be considered in choosing materials for construction of farm building and structures. (2mks)

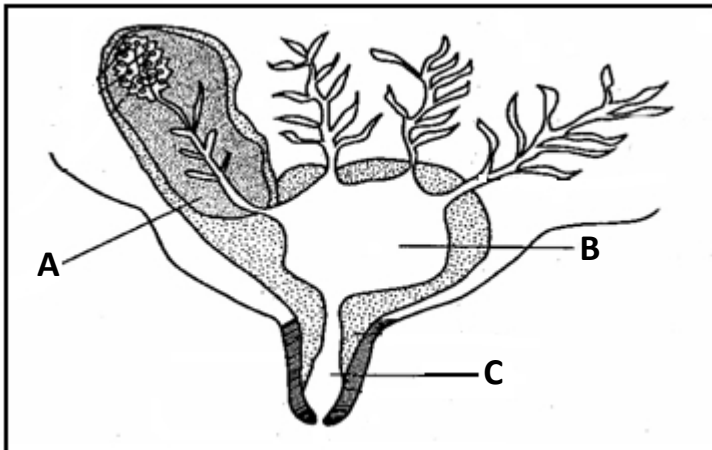
---

---

---

---

20. **Below** is the longitudinal section of a cow's udder.



(a) Identify the parts labeled **A, B, C**. (3mks)

**A** \_\_\_\_\_

**B** \_\_\_\_\_

**C** \_\_\_\_\_

(b) Give **four** pre-requisites of clean milk production. (2mks)

---

---

---

---

(c) Describe the procedure of castration of a bull using a burdizzor. (2mks)

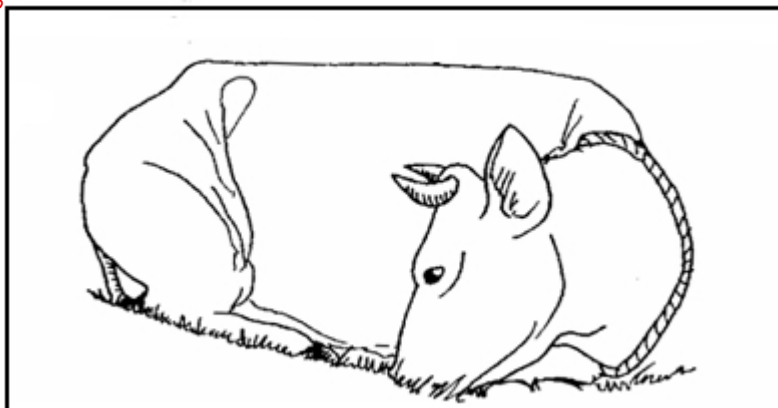
---

---

---

---

21. **Below** is a diagram of cow suffering from a deficient disease. Study it and answer the questions **below**.



(a) Identify the disease above animals is suffering from. (1mk)

---

(b) What stage or state of the body condition encourages the disease above? (1mk)

---

(c) List **two** symptoms of the above disease. (2mks)

---

---

---

---

(d) Give **two** control measures of the above identified disease. (2mks)

---

---

---

---

**SECTION C: (40 MARKS)**

Answer any **two** questions from this section in the spaces provided after question 22.

22. (a) Describe the procedure of wool shearing in sheep. (10mks)
- (b) Describe the working of four strokes cycle in a petrol engine. (10mks)
23. Give **ten** routine practices and explain an appropriate method of handling livestock during the routine practice. (20mks)
24. (a) Describe the digestion of grass in the rumen of a ruminant. (6mks)
- (b) Describe the life cycle of a three host-tick. (7mks)
- (c) Write short notes on Friesian breed of dairy cattle under the following sub headings: (7mks)
- (i) Origin.
  - (ii) Characteristic.

---

---

---

---

---

---

---

---

---

---

---

---

---

---

---

---

---

---

---

---

---

---

---

---



For More Free KCSE Past papers Visit [www.freekcsepastpapers.com](http://www.freekcsepastpapers.com)

For More Free KCSE Past papers Visit [www.freekcsepastpapers.com](http://www.freekcsepastpapers.com)