

BIOLOGY PAPER 231/1 K.C.S.E 1997

QUESTIONS

Answer all the questions in this section in the spaces provided

1. State the functions of the following cell organelles
 - (a) Golgi apparatus
 - (b) Ribosomes
2. A student caught an animal which had the following characteristics:
Body divide into two parts
Simple eyes
Eight legs
The animal belong to the class
3. What are the three end products of anaerobic respiration in plants
4. state two ways in which xylem vessels are adapted to their function
5. In an accident a victim suffered brain injury. Consequently he had loss of memory. Which part of the brain was damaged?
6. Oil can be applied on the stagnant water to control the spread of malaria.
 - (a) How does this practice control the spread of malaria?
 - (b) Give a reason why this practice should be discouraged

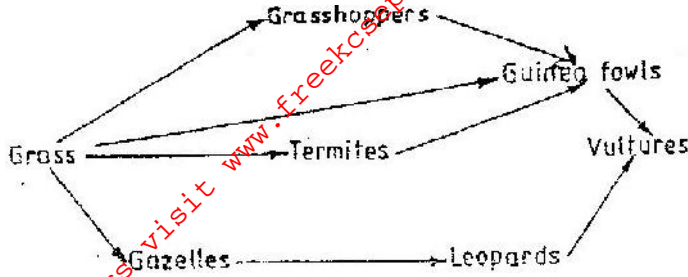
7. State three structural differences between biceps muscles of the gut.

Biceps	Gut Muscles
Striated	Unstriated
Multinucleated	Uninucleated
Long fibres	Short fibres
Cylindrical	Spindle shaped

8. A person was found to pass out large volumes of dilute urine frequently.
Name the
 - (a) Disease the person was suffering from
 - (b) Hormone that was deficient
9. state three pieces of evidence that support the theory of evolution
10. Name a disease caused by lack of each of the following in human diet.
Vitamin D
Iodine

SECTION B (40 MARKS)

11. The following below represents a feeding relationship in an ecosystem



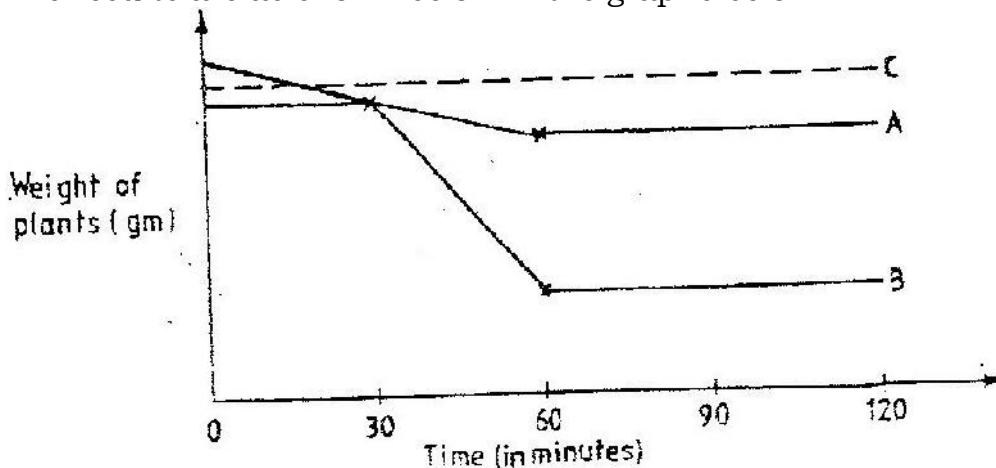
- Write down the food chains in which the guinea fowls are secondary consumers
- What would be the short term effects on the ecosystem if lions invaded the area?
- Name the organism through which energy from the sun enters the food web.

12. A person was able to read a book clearly at arm's length but at normal reading distance.

- State the defect the person suffered from?
- Why was he unable to read book clearly at normal distance
- How can the defect be corrected?

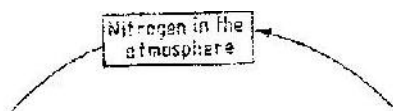
13. An experiment was carried out to determine the rate of transpiration in three plants A, B and C. Plants, A and B belonged to different species while plants B and C belonged to the same species. Plant C had all its leaves removed. The three plants were of similar size and were exposed to the same environment conditions.

The results are as shown below in the graphs below



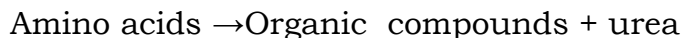
- Suggest possible environment conditions under which the experiment was carried out between 30 and 60 minutes
- Account for the results obtained for plant C
- Suggest the habitat for plant A and B. Give reasons for your answer.
Habitat for plant A
Habitat for plant B

14. The diagram below represents a simplified nitrogen cycle.



- (a) Name the organisms that cause process E and J
- (b) Name the process represented by F and H.
- (c) Name the group of organism represented by G

15. The equation below represent a metabolic that occurs in the mammalian live



- (a) Name the process.
- (b) What is the importance of the process to the mammal?
- (c) What is the source of amino acids in this process
- (d) What is the difference between essential and nonessential amino acids?

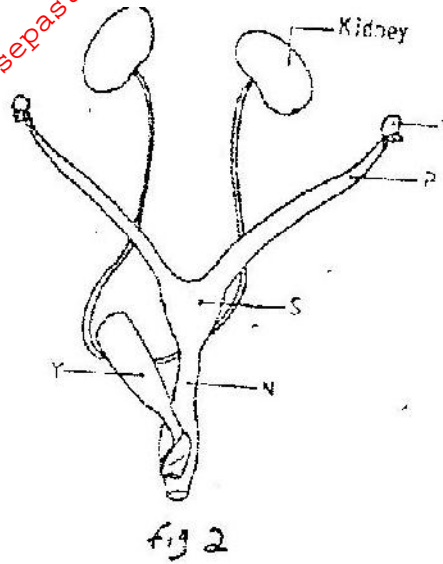
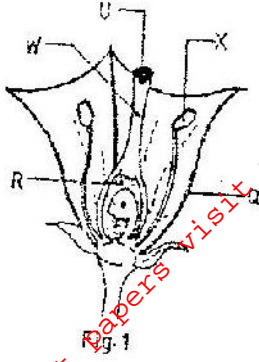
16. In a breeding experiment, plants with red flowers were crossed. The produced 123 plants with red flowers and 41 with white flowers

(a) Identify the recessive character

Give a reason

(b) What was the genotype of the parent plants that gave rise to the plants with a red and white flowers?

17. Figures 1 and 2 below represent reproductive organ of plants and an animal respectively.



- (a) Which letters in figures 1 and 2 represents the organs that produce female gametes?
 Figure 1
 Figure 2
- (b) What is the function of the structure labeled S?
- (c) Name the structure labeled W
- (d) Which letters in figures 1 and 2 represents the structures where fertilization takes place
- (e) Which letter in figure 1 represents the structure where male gametes are produced?

SECTION C (40 marks)

18. An experiment was carried out to determine the growth rates of bamboo and a variety of maize plants in two adjacent plots. The average height and average dry weight of plants from the two populations were

determined over a period of twenty weeks. The data is as shown in the table below.

	Bamboo		Maize	
Age in weeks	Average height (Metres)	Average weight (Grams)	Average height (Metres)	Average weight (Grams)
2	1.3	52	0.3	20
4	4.0	182	0.5	29
6	8.2	445	0.8	57
8	12.1	682	1.2	78
10	13.9	801	1.7	172
12	14.1	957	1.9	420
14	14.3	1025	2.1	704
16	14.4	1062	2.1	895
18	14.6	1127	2.1	926
20	14.6	1229	2.1	908

- (a) Between which two weeks did the greatest increase in weight occur in
- (b) Bamboo plants
(i) Maize plants
- (b) (i) Which of the two types of plants had a higher productivity by the end of the experiment
(ii) Give a reason for your answer in (b) (i) above
- (c) Between weeks 14 and 18, the average height of the maize plants remained constant while average dry weight increased.
Explain this observation
- (d) Suggest how the change in the average dry weight bamboo and maize plants would have been at week 22 if the experiment was continued.
- (e) Why was it appropriate for this experiment to use
(i) Dry weight instead of fresh weight
(ii) Weight and height
- (f) Describe how the average height and weight of the plants were determined in this experiment.
Average height
Average dry Weight
- (g) Give a reason why secondary thickening does not occur in bamboo and maize plants
19. (a) What is parasitism?
(b) Describe how the tapeworm is adapted to a parasitic mode of life
20. (a) What is meant by the term digestion?
(b) Describe how the mammalian small intestine is adapted to its function