

NAMEADM NO.....

SCHOOLSTREAM.....

442/2

DATE.....

AGRICULTURE

Paper 2

Jan/Feb 2013

2 hours

BUNYORE – MARANDA JOINT EXAMINATIONS 2013

AGRICULTURE

442/2

Paper 2

2 hours

INSTRUCTIONS TO CANDIDATES

- a) Fill in the details in the spaces provided above.
- b) This paper consists of three sections; A, B and C
- c) Answer all the questions in section A and B
- d) Answer any two questions from section C

For Examiner's Use Only

Section	Questions	Maximum Score	Candidate's Score
A	1-19	30	
B	20-23	20	
C	24-26	40	
Total Score		90	

SECTION A (30 marks)

Answer all questions in this section in the spaces provided

1. (a) Which bacterium causes contagious abortion in cattle? (½mk)
.....
(b) List any three farm structures that are necessary for handling animals (1½mk)
.....
.....
.....
2. Which tool is required for each of the following operation?
(i) Cutting wool from sheep (½mk)
.....
(ii) Castrating piglet (½mk)
.....
3. State four maintenance practices carried out on an ox-plough (2mks)
.....
.....
.....
.....
4. Give two pre-disposing factors to foot rot disease in sheep (1mk)
.....
.....
5. (a) What is the duration of oestrus cycle in a cow? (½mk)
.....
(b) If a dairy cow is noticed to be showing first signs of heat at 6:00 am, what time should it be inseminated? (½mk)
.....
6. Name four types of fences that would be constructed on animal farms (2mks)
.....
.....
.....
.....
7. State four reasons for culling a breeding boar (2mks)
.....
.....
.....
.....
8. State two disadvantages of inbreeding in livestock production (2mks)
.....
.....

9. What is the function of spill way in a fish pond? (½mks)

.....

10 State two reasons why calcium and phosphorus are important in the diet of young livestock (1mk)

.....

.....

11. State two methods of extracting honey from honey combs (1 mk)

.....

.....

12. State three practices that should be carried out on eggs before they are put in an incubator for hatching. (1½mk)

.....

.....

.....

13. List four harmful effects of internal parasites in livestock (2mks)

.....

.....

14. State four factors which determine the quality of farm yard manure (2mks)

.....

.....

.....

15. State four signs that are likely to be observed from a cow on heat (2mks)

.....

.....

.....

16. Name two kinds of livestock which can be castrated using a rubber ring (1mk)

.....

.....

17. State four causes of stress to flock of layers (2mks)

.....

.....

.....

18. Give four reasons why bees may swarm from a bee hive (2mks)

.....

.....

.....

.....

19. What is meant by the following terms in livestock health?

(a) Incubation period

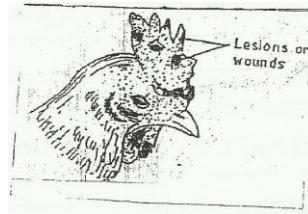
(1mk)

.....
(b) Mortality rate (1mk)
.....

SECTION B (20 Marks)

Answer all the questions in this section in the spaces provided

20. The following diagram illustrates a symptom of a disease in poultry. Study it carefully and answer the questions that follow.



(a) Identify

(i) The disease

(½mk)

.....
(ii) The causal organism (½mk)
.....

(b) A part from lesions states two other symptoms of the disease?

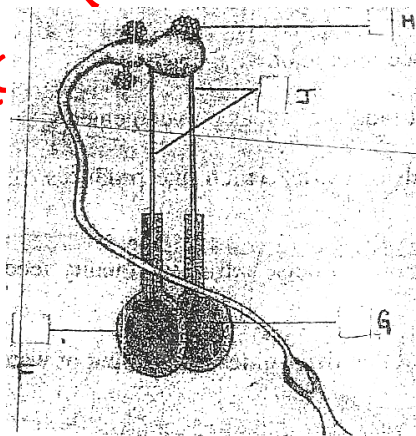
.....
.....

(c) State two control measures of the disease

(2mks)

.....
.....

21. The diagram below shows the reproductive system of a bull. Study it carefully and answer the question that follows?



a) Name the part labeled F, G, H and J.

(2mks)

F.....
G.....
H.....
J.....

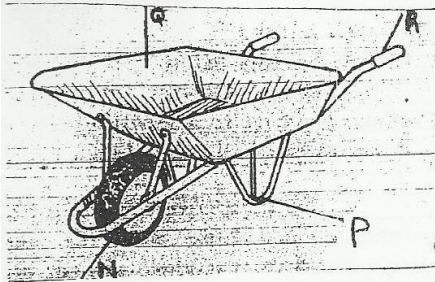
b) Give two functions of the part labeled G (2mks)

.....
.....

c) Give the role of the part labeled J. (1mk)

.....
.....

22. Below is diagram of a wheelbarrow. Study it carefully and answer the question that follows.



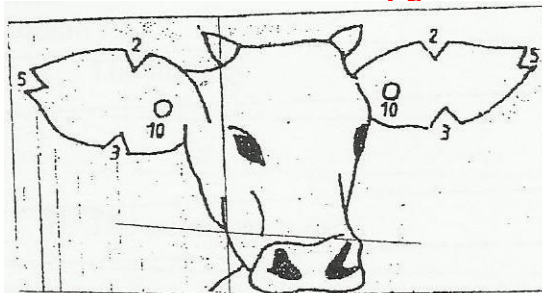
(a) Name the part labeled N, P, Q and R (2mks)

.....
.....
.....

(b) State two functions of the part labeled Q (2mks)

.....
.....

23. The diagram below illustrates a method of identification in livestock production. Study the diagram and answer the question that follows?



a) i) Name the type of identification illustrated (1mk)

.....
.....

ii) Give the identification number of the animal illustrated in the diagram (1mk)

.....
.....

iii) Using diagram illustrate how you can identify animals numbers 24 and 36 using the method. (2mks.)

- b) If a sow was successfully served on 27th march 2013, state the date she is likely to have furrowed. (1mk)

.....

SECTION C (40 Marks)

Answer any two questions from this section in the spaces provided after question 26

24. a) Outline the procedure of castrating a bull using a burdizzo (5mks)
b) State the reasons for castrating cattle (5mks)
c) Describe the physical characteristics of good gilt for breeding (5mks)
d) Describe the digestion of grass in the rumen of an adult ruminant (5mks)
25. Describe the management of layers in a deep litter system starting from the point of lay (20mks)
26. a) Describe the uses of farm fences (10mks)
b) Describe the control measures of diseases in livestock (10mks)

.....
.....
.....
.....
.....
.....
.....
.....
.....
.....
.....
.....
.....
.....
.....
.....
.....
.....
.....
.....
.....
.....