

Name..... Index No.....
443/2 Candidates signature.....

AGRICULTURE

Date.....

Paper 2.
March/April 2013.
2hours.

MOKASA JOINT EVALUATION EXAMINATION

Kenya Certificate of Secondary Education

AGRICULTURE

Paper 2
2hours. (2nd session)

Instructions to candidates:

- a) Write your name and index number in the spaces provided above. Sign and write the date of examination.
- b) This paper consists of three sections: **A, B and C.**
- c) Answer all the questions in sections **A and B** any any other two questions from section **C.**
- d) Answers should be written in the spaces provided.
- e) This paper consists of **25** questions printed on ten pages.
- f) Candidates should check the question paper to ascertain that all the pages are printed as indicated and that no questions are missing.

For Examiner's use only.

Section	Questions	Maximum score	Candidate's score
A	1- 17	30	
B	18- 22	20	
C		20	
		20	
Total score		90	

SECTION A (30marks)

Answer ALL the questions in this section in the spaces provided.

1. (a) Name **two** hormones that control milk let down in a dairy cow. **(1mk)**

.....
.....
.....

(b) State **two** practices which are carried to control mastitis in lactating cows. **(1mk)**

.....
.....
.....

2. Give **four** notifiable diseases affecting cattle . **(2mks)**

.....
.....
.....
.....

3. State **two** ways by which proper feeding contribute to disease control in livestock. **(1mk)**

.....
.....

4. Name the intermediate and final host of the tapeworm.

Intermediate..... **($\frac{1}{2}$ mk)**

Final..... **($\frac{1}{2}$ mk)**

5. State **four** factors that are considered when formulating a livestock ration. **(2mks)**

.....
.....
.....

6. Name the most appropriate tool for each of the following farm practices.

(a) Castrating Piglets **($\frac{1}{2}$ mk)**

.....

(b) Applying oil at the hub of a wheel of a wheelbarrow. **($\frac{1}{2}$ mk)**

.....

(c) Cutting thin wires strand. (1/2mk)

.....

7. Give **three** methods of harvesting tractor power. (1 1/2mks)

.....
.....
.....

8. State **five** factors a farmer must consider when selecting heifer for milk production. (2 1/2mks)

.....
.....
.....
.....
.....

9. Name **four** methods of controlling Newcastle disease in chicken. (2mks)

.....
.....
.....
.....

10. Give **four** measures that help control egg-eating in a deep litter system. (2mks)

.....
.....
.....
.....

11. State **four** reasons for castrating bull calves in dairy cattle management. (2mks)

.....
.....
.....
.....

12. State **four** signs of infestation by external parasites in livestock. (2mks)

.....
.....
.....

13. State **four** functions of worker bees in a colony. (2mks)

.....
.....
.....
.....

14. State **four** management practices in fish rearing in a fish pond. (2mks)

.....
.....
.....
.....

15. State **four** precautions that should be taken while drying timber in the air. (2mks)

.....
.....
.....
.....

16. State **four** properties of concrete that make it more suitable in the construction of farm structures. (2mks)

.....
.....
.....
.....

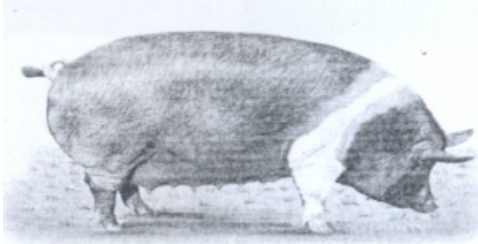
17. Outline two problems associated with air cooled tractor engines. (1mk)

.....
.....
.....

SECTION B (20marks)

Answer ALL questions in this section in the spaces provided.

18. Study the illustration below and answer the questions that follow



(a) Identify the pig breed. (1mk)

.....

(b) Outline **four** characteristics considered when selecting pigs for pork production. (4mks)

.....
.....
.....
.....
.....

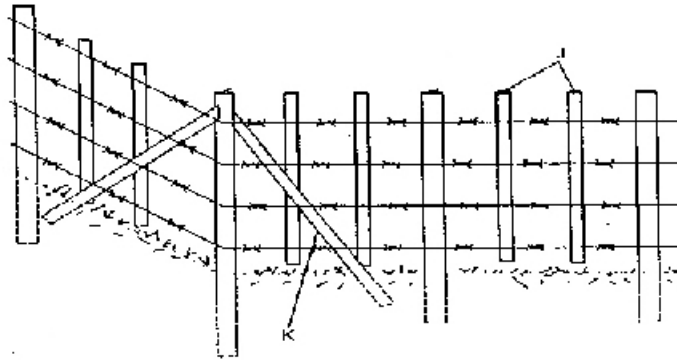
19. (a) A dairy cow weighing 400kg live weight requires 3% of its body weight dry matter (DM) per day. However, the cow only gets 50% of its daily DM requirements from grazing field. How much dairy meal concentrates (80% DM) should the farmer supplement to its daily requirements? Show your workings. (3mks)

.....
.....
.....
.....

(b) Give **two** effects of overstocking in pasture management. (2mks)

.....
.....

20. The diagram below shows a type of a fence found in a farm. Study it and answer questions that follow.



(i) Identify the type of fence. (1mk)

.....

(ii) Name the parts labelled **J** and **K**. above. (1mk)

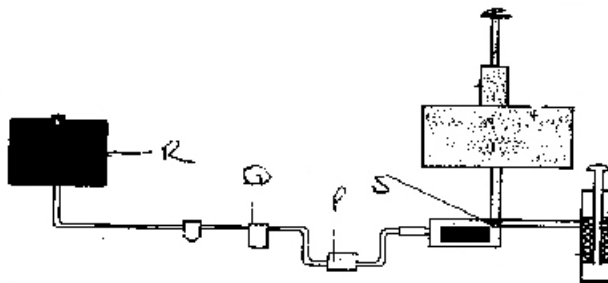
J

K

(iii) Give **three** disadvantages of the fence illustrated above. (1½mks)

.....

21. The illustration below shows the fuel system of a petrol engine. Study it carefully and answer questions that follow.



(i) Identify the parts labelled **P**, **Q**, **R** and **S** above. (2mks)

P

Q

R

S

(ii) Give the function of the part labelled **Q** above. (1mk)

.....

(iii) Outline **two** maintenance practices of the system illustrated above. (2mks)

.....

.....

.....

SECTION C (40marks)

Answer any **two** questions from this section in the spaces provided after question 22

23. (a) Explain **five** factors that affect digestibility of food in livestock. (10mks)

.....

.....

.....

.....

.....

.....

.....

.....

.....

.....

.....

.....

.....

.....

.....

.....

.....

.....

.....

.....

(c) Describe the activities carried out in preparation for farrowing.

(5mks)

.....

.....

.....

.....

.....

.....

.....

.....

.....

.....

.....

24. (a) Describe the life cycle of a **three - host tick**.

(5mks)

.....

.....

.....

.....

.....

.....

.....

.....

.....

.....

.....

.....

.....

.....

.....

.....

.....

.....

.....

.....

.....

.....

.....

.....

.....

(b) Outline the procedure one would follow when castrating a male piglet.

(5mks)

.....

.....

.....

.....

.....

.....

.....

.....

.....

.....

.....

.....

.....

.....

.....

.....

.....

.....

.....

.....

.....

.....

.....

.....
.....
.....

(c) State **five** disadvantages of natural method of mating. (5mks)

.....
.....
.....
.....
.....

25. (a) State **five** advantages of farm mechanization. (5mks)

.....
.....
.....
.....
.....

(b) Give **five** maintenance practices of a water cooling system of a tractor. (5mks)

.....
.....
.....
.....
.....

(c) Describe **Rinderpest** disease under the following sub-headings.

(i) Animals attacked (2mks)

.....
.....
.....

(ii) Causal agent. (1mk)

.....
.....

(iii) Symptoms of the disease. (4mks)

.....
.....
.....
.....
.....
.....
.....
.....
.....
.....
.....
.....
.....
.....

(iv) Control measures. (3mks)

.....
.....
.....
.....
.....

For more free KCSE past papers visit www.freeKCSEpastpapers.com