

NAME:.....

INDEX NO:.....

SCHOOL:.....

DATE:.....

SIGN:.....

231/3
BIOLOGY
PAPER 3
(PRACTICAL)
JULY/AUGUST - 2012
TIME: 1³/₄ HOURS

BURETI DISTRICT JOINT EVALUATION TEST– 2012
Kenya National Examination Council (K.C.S.E)

231/3
BIOLOGY
PAPER 3
(PRACTICAL)
JULY/AUGUST - 2012
TIME: 1³/₄ HOURS

INSTRUCTIONS TO CANDIDATES

1. Write your name and index number in the spaces provided.
2. You are required to spend the first 15 minutes of 1³/₄ hours allowed for this paper reading the whole paper carefully before commencing your work.
3. Answers must be written in the spaces provided in the question paper.
4. Additional pages should not be inserted candidates may be panelized for recording irrelevant information and for incorrect spellings especially of technical terms.

FOR EXAMINERS USE ONLY.

QUESTIONS	MAXIMUM SCORE	CANDIDATE'S SCORE
1	13	
2	14	
3	13	
SCORE	40	

This paper consists of 8 printed pages.

Candidates should check the question paper to ensure that all pages are printed as indicated and that no questions are missing.

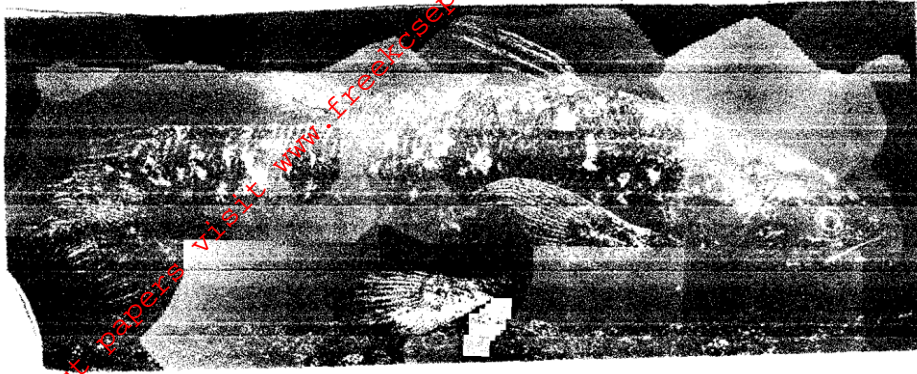
1. You are provided with solution L, dilute hydrochloric acid, Benedict's solution, 1% copper sulphate solution and 10% sodium hydroxide solution.
 Add 2ml. of hydrochloric acid to solution L.
 Filter the mixture using the filter paper provided.
 Using the reagents provided carry out food tests on the residue and filtrate. (13 marks)
- a) Residue

Food substance being tested for	Procedure	Observation	Conclusion

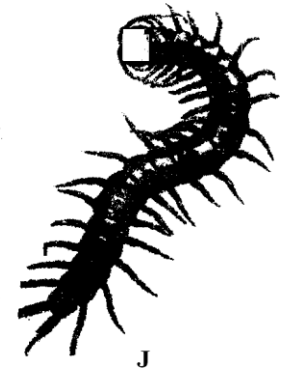
- b) Filtrate

Food substance being tested for	Procedure	Observation	Conclusion

2. Below are photographs of organisms labeled F, G, H, J, K, L, and M. Using the key provided identify organisms, H, J, L and M.



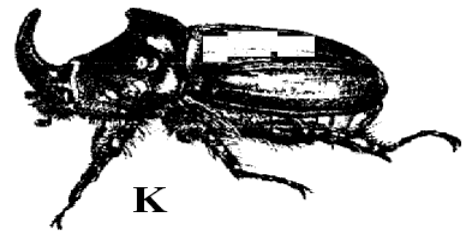
F



J



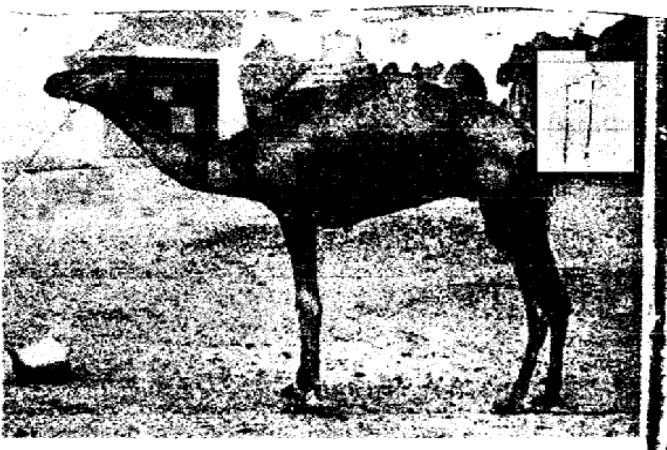
H



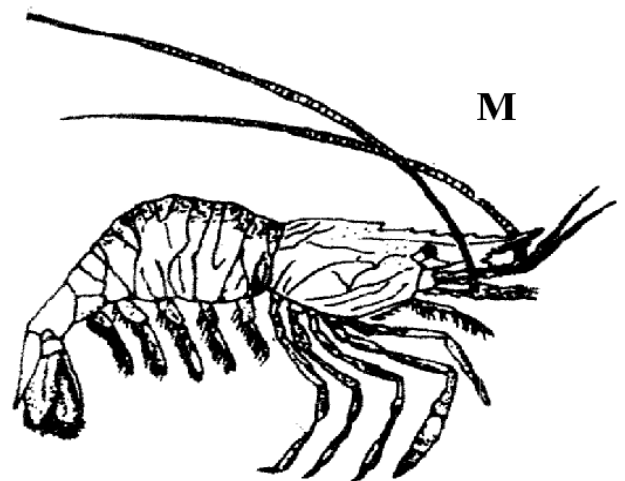
K



L



G



M

KEY

- 1 a) Has exoskeletongo to 2
 b) Has endoskeleton.....go to 7
- 2 a) Has five or less than five pairs of legs go to 3
 b) Has more than five pairs of legs.....go to 6
3. a) Body has three distinct partsgo to 4
 b) Body has two distinct partsgo to 5
- 4 a) Has membranous outer wingssnapdragon
 b) Has a hard outer wingBeetle
- 5 a) Has two pairs of antennaeCrustacea
 b) Has no antennaeArachnida
- 6 a) Body cylindrical with two pairs of leg per segmentDiplopoda
 b) Body flattened with one pair of legs per segment.....Chilopoda
- 7 a) Has fins for locomotionPisces
 b) Has two pairs of limbs for locomotiongo to 8
- 8 a) Body covered with furMammalia
 b) Body covered with rough warty *skin*.....Amphibia

a) Identify the organism H, J, L and M (8 marks)

	Photograph	Steps	Identify
i)	H		
ii)	J		
iii)	L		
iv)	M		

b) Examine photographs G carefully. Explain three observable features that adapts the organism to survive in its habitat. (6 marks)

.....

.....

.....

.....

.....

.....

.....

3. The photographs below are of flower of different plants. Flower P₁ and P₂ are from the same plant



P₁



P₂

a) Identify the flower type in *photograph* P₁ and P₂. (2 mark)

P₁

.....

.....

P₂

.....

.....

b) i) Suggest the likely agent for pollination for flowers? (1 mark)

.....

.....

ii) From observation features only, explain how flower P is adapted for the agent of pollination in b (i) (6 marks)

.....

.....

.....

.....

c) Give a class to which the plant from which flower P1 and P2 were obtained. Give a reason

Class

.....
.....

Reason

.....
.....

d) i) Name the agent for pollination for the flower in photograph Q



Flower Q

ii) Give one reason for your answer in d(i) above

.....
.....

For More Free KCSE past papers visit www.freekcsepastpapers.com

For More Free KCSE past papers visit www.freekcsepastpapers.com