

NAME:.....

INDEX NO:.....

SCHOOL:.....

DATE:.....

SIGN:.....

231/3
BIOLOGY
PAPER 3
(PRACTICAL)
JUNE/JULY - 2012
TIME: 1³/₄ HOURS

BUTERE DISTRICT JOINT EVALUATION – 2012
Kenya Certificate of Secondary Education (K.C.S.E)

231/3
BIOLOGY
PAPER 3
(PRACTICAL)
JUNE/JULY - 2012
TIME: 1³/₄ HOURS

INSTRUCTIONS TO CANDIDATES

1. Write your name and index number in the spaces provided.
2. You are required to spend the first 15 minutes of 1³/₄ hours allowed for this paper reading the whole paper carefully before commencing your work.
3. Answers must be written in the spaces provided in the question paper.
4. Additional pages should not be inserted candidates may be panelized for recording irrelevant information and for incorrect spellings especially of technical terms.

FOR EXAMINERS USE ONLY.

QUESTIONS	MAXIMUM SCORE	CANDIDATE'S SCORE
1	16	
2	10	
3	14	
SCORE	40	

This paper consists of 8 printed pages. Candidates should check the question paper to ensure that all pages are printed as indicated and that no questions are missing.

QUESTION 1

1. (a) You are provided with specimen labeled T. Using a blade cut a transverse section.

Draw a labeled plan diagram of the cut section. (5mks)

Work out your magnification.

.....

.....

.....

.....

.....

.....

.....

.....

.....

(b) With a reason state the type of placentation displayed by specimen, (2mks)

.....

.....

(c) Put one spatula full of river sand in mortar.

- Cut small pieces of half of specimen Q.
- Grind into a fine powder.
- Add 3 ml of distilled water.
- Collect the resulting extract and paste into a clean beaker.
- Using the reagents provided carry out food test.

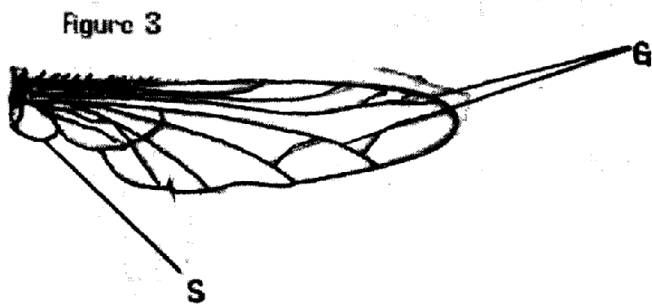
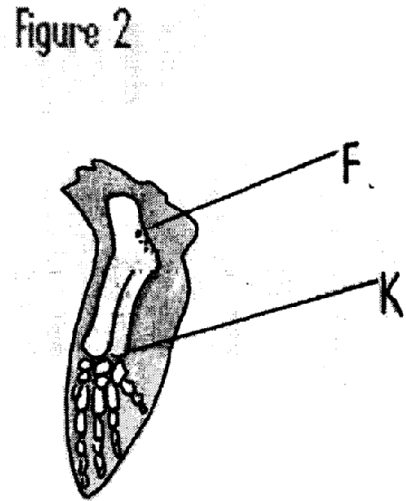
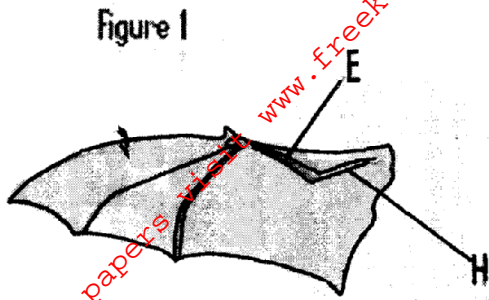
(9mks)

TEST	PROCEDURE	OBSERVATION	CONCLUSION

For More Free KCSE past papers visit www.freekcsepastpapers.com

QUESTION 2

2. The following figures represents the forelimbs of certain animal species. Study them and answer the questions that follow.



2. (a) Name the parts labeled E F and G. (3mks)
- E
- F
- G
- (b) State the type of skeleton represented in Figure 1.(1mk)
- (c) Name the type of joint at point K.(1mk)
-
- (d) Which figures represent:
- (i) Analogous structures.(1mk)
- (ii) Homologous structure.....(1mk)
- (iii) Give a reason for d(i) above.(1mk)
- (e) (i) What are vestigial organs.....(1mk)
- (ii) Give an example of vestigial organ in man.....(1mk)

3. You are provided with the following figures

Figure J

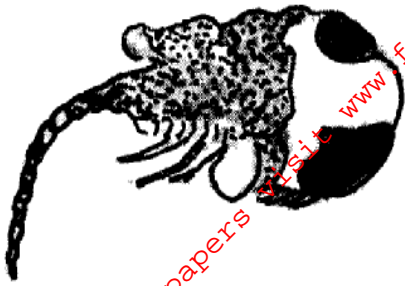


Figure M

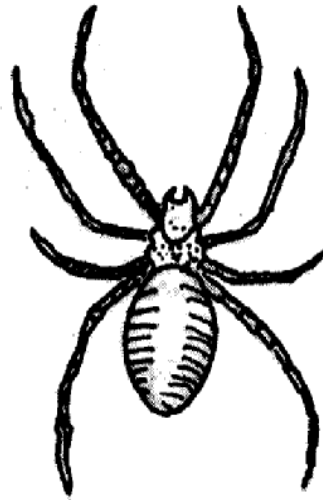


Figure K

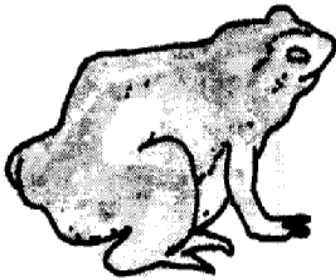
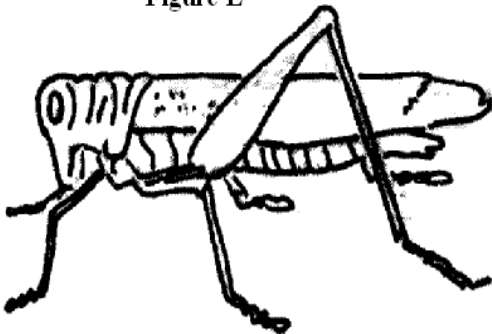


Figure N



Figure L



Study them and answer the questions that follow.

(a) Classify the organism M, J, N and L into their taxonomic units. (6mks)

(i) Kingdom.....

(ii) Phylum

(iii) Class

(b) State observable characteristics of organisms represented by figure K. (2mks)

.....

(c) You are provided with an incomplete dichotomous key.

1. (a) Animals with segmented bodiesGo to 2

(b)

2. (a) Animals with wings.....L

(b) Animals without wingsGo to 3

3. (a) Has four pairs of legsM

(b) Has more than four pairs of legs.....Go to 4

4. (a) Has a pair of poisonous claw J

(b) Without poisonous clawN

Fill in the missing step (1mk)

Using the key write down the steps used to identify the organisms. (5mks)

Organism	Steps
M	
J	
N	
L	
K	

For More Free KCSE past papers visit www.freekcsepastpapers.com

For More Free KCSE past papers visit www.freekcsepastpapers.com