

NAME..... INDEX NO.....

443/2  
AGRICULTURE  
PAPER 2  
JULY/AUGUST, 2014  
TIME: 2 HOURS

CANDIDATE'S SIGN.....

DATE.....

## KIHARU/KAHURO DISTRICT JOINT EXAMINATION - 2014

Kenya Certificate of Secondary Education  
AGRICULTURE  
PAPER 2  
TIME: 2 HOURS

### INSTRUCTIONS TO CANDIDATES:

- Write your **name** and **index number** in the spaces provided above.
- Sign and write the date of examination in the spaces provided above.
- This paper consists of **THREE** Sections **A**, **B** and **C**.
- Answer all questions in Section **A** and **B** and any **Two** in Section **C**.
- All answers must be written in the spaces provided.

### FOR EXAMINER'S USE ONLY

Section	Question	Maximum Score	Candidate's Score
A	1 - 17	30	
B	18 - 21	20	
C	22 - 24	40	
Total Score		90	

**SECTION A: (30 MARKS)**

**Answer all questions in this section in the spaces provided.**

1. Give the terms used to describe the young one of the following livestock. (2mks)

- (a) Donkey \_\_\_\_\_
- (b) Fish \_\_\_\_\_
- (c) Rabbit \_\_\_\_\_
- (d) Goat \_\_\_\_\_

2. Give **four** reasons for treating timber before roofing. (2mks)

---

---

---

---

3. Give **four** predisposing factors of scours. (2mks)

---

---

---

---

4. State **two** advantages of housing calves singly in cattle management. (1mk)

---

---

5. Name **two** practices that are carried out when preparing ewes for mating. (1mk)

---

---

6. Give **four** reasons for identification in cattle management. (2mks)

---

---

---

---

7. Distinguish between isolation and quarantine as used in livestock production. (2mks)

---

---

---

---

8. Give **two** additives used in livestock feeding. (1mk)

---

---

9. Mention **four** situations which may necessitate the handling of livestock. (2mks)

---

---

---

---

10. State **four** factors that affect the digestibility of feed. (2mks)

---

---

---

---

11. List **three** plumbing tools. (1½mks)

---

---

---

---

12. Name **three** main parts of a truss. (1½mks)

---

---

---

13. State **four** reasons why an animal may be culled. (2mks)

---

---

---

---

14. State **three** signs of heat in pigs. (1½mks)

---

---

---

15. Give **three** methods of harnessing tractor power. (1½mks)

---

---

---

16. List **six** management practices carried out on fish pond for optimum fish production. (3mks)

---

---

---

---

---

---

17. A dairy cow under zero grazing system weighs 700kg. Calculate how much of dry matter it takes given that it take 2.5kg for every 100kg live weight. (2mks)

---

---

---

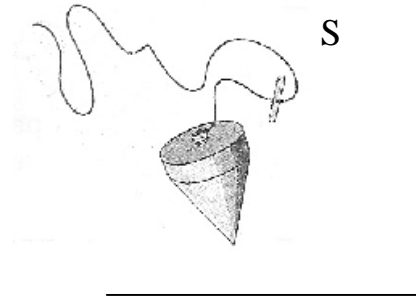
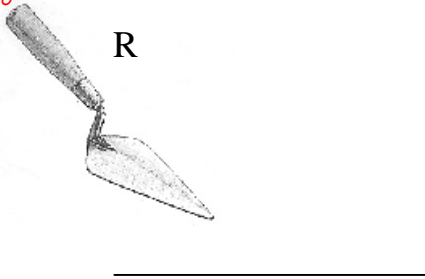
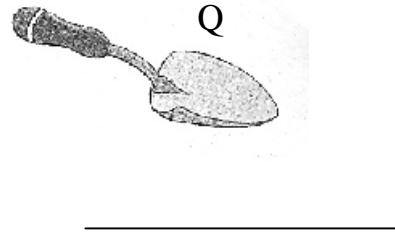
---

For More Free KCSE Past papers visit [www.freekcsepapers.com](http://www.freekcsepapers.com)

**SECTION B: (20 MARKS)**

**Answer all questions in this section in the spaces provided.**

18. The diagram below represent common farm tools and equipment labelled **P**, **Q**, **R** and **S**. Study them and then answer questions below.



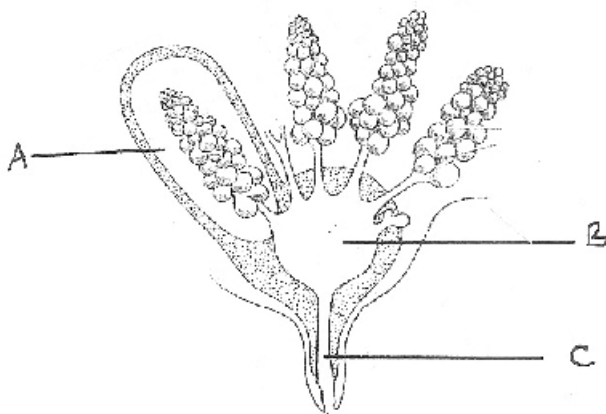
- (i) Identify the tools/equipment by giving the exact name below each tool. (2mks)
- (ii) Give the function of equipment labelled S. (1mk)

\_\_\_\_\_

\_\_\_\_\_

\_\_\_\_\_

19. Below is a longitudinal section of a cow's udder.



- (a) Identify the parts labelled **A**, **B**, **C**. (3mks)

**A** \_\_\_\_\_

**B** \_\_\_\_\_

**C** \_\_\_\_\_

(b) Give **two** essentials of clean milk production. (2mks)

---

---

(c) Describe the procedure of castration of a bull using a burdizzor. (3mks)

---

---

---

20. Outline **five** methods of reinforcing fences to make them stronger. (5mks)

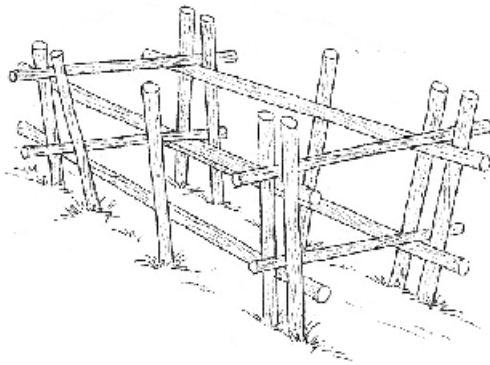
---

---

---

---

21. The diagram below illustrates a livestock handling structure. Study the diagram carefully and answer the questions that follow.



(a) Identify the structure. (1mk)

---

(b) Mention **two** maintenance practices carried out on the structure. (2mks)

---

---

(c) State **two** practices which could be carried out from the structure. (1mk)

---

---

**SECTION C: (40 MARKS)**

**Answer any two questions from the section.**

22. (a) Explain the limitations of tractor power in farm mechanization. (6mks)  
(b) Explain the importance of each of the functional difference between a disc plough and a mouldboard plough. (10mks)  
(c) Identify **four** measures to be observed to ensure efficient ploughing by use of oxen. (4mks)
23. (a) Describe the calf management of a dairy calf from birth to weaning. (12mks)  
(b) Give **five** predisposing factors of mastitis. (5mks)  
(c) Outline **three** symptoms of internal parasite infestations in livestock. (3mks)
24. (a) Describe maintenance practices which are carried out on farm buildings. (10mks)  
(b) Outline the factor considered when siting a bee hive. (5mks)  
(c) Outline the management practices carried out in an incubator. (5mks)

---

---

---

---

---

---

---

---

---

---

---

---

---

---

---

---

---

---

---

---

---

---

---

---

---

---

---

For More Free KCSE Past papers Visit [www.freekcsepastpapers.com](http://www.freekcsepastpapers.com)



For More Free KCSE Past papers Visit [www.freekcsepastpapers.com](http://www.freekcsepastpapers.com)

For More Free KCSE Past papers Visit [www.freekcsepastpapers.com](http://www.freekcsepastpapers.com)