

441/2
(CLOTHING CONSTRUCTION)
PAPER 2
(PRACTICAL)
JULY/AUGUST 2014
TIME: 2½ HOURS

KIHARIUKAHURO DISTRICT JOINT EXAMINATION – 2014

Kenya Certificate of Secondary Education
CLOTHING CONSTRUCTION
PAPER 2
(PRACTICAL)
TIME: 2½ HOURS

A pattern of a child's dress is provided. You are advised to study the sketches, question paper and the layout carefully before you begin the test.

MATERIALS PROVIDED:

1. Pattern pieces.
 - A Dress front
 - B Dress back
 - C Sleeve
 - D Back neck facing
 - E Front neck facing
2. Plain white cotton fabric 70cm long by 90cm wide.
3. Sewing thread to match the fabric.
4. One large envelope.

THE TEST:

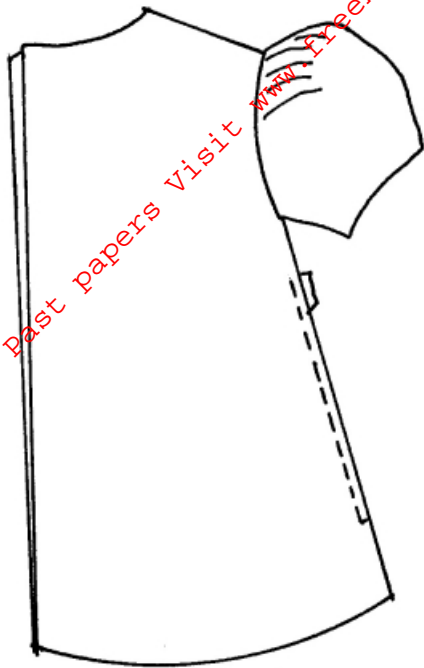
Using the materials provided, cut out and make up the Left Half of the child's dress to show the following.

- (a) The making of machine fell seam at the shoulder.
- (b) The joining of the side with neatened open seam and the preparation and fixing of the zip using semi concealed (edge to edge) method.
- (c) The working of the sleeves underarm seam using a neatened open seam.
- (d) The preparation gathering and attachment of the sleeve on the armhole.
Note: Neaten only the front of the armhole seam by overcasting.
- (e) Joining of the back and front neck facings and neatening the raw edges.
- (f) Attachment of the neck facings to the neckline of the garment.

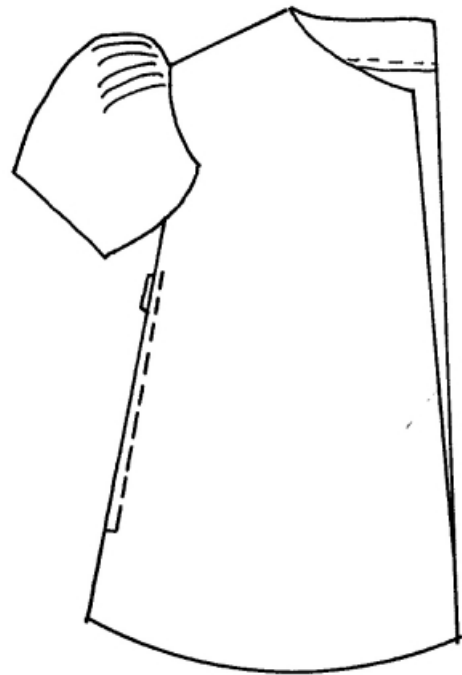
At the end of the examination, firmly sew on to your work on a single layer of fabric a label bearing your name and index number.

Remove needles and fold your work neatly and place it in the envelope provided. Do not put scraps of fabric.

CHILD'S DRESS



BACK VIEW



FRONT VIEW

THE LAYOUT (NOT DRAWN TO SCALE)

