

## K.C.S.E YEAR 2010 PAPER 2

### SECTION A (30 marks)

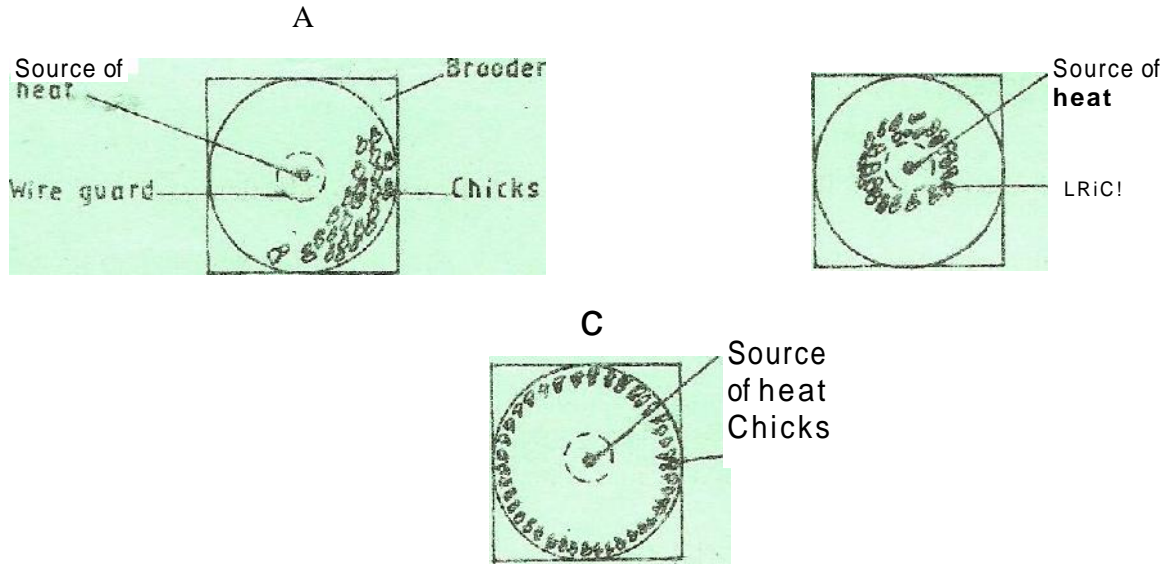
*Answer all the questions in this section in the spaces provided*

- 1 Name the causal agent of anaplasmosis disease in cattle, (1/2 mark)
- 2 List four materials that can be used in constructing a Kenya Top Bar Hive. (2 marks)
- 3 (a) Name two breeds of dairy cattle that originated from the Channel Islands. (1 mark)  
(b) Give the distinguishing colour for each of the following breeds of livestock:
  - (i) chinchilla rabbit; (1/2 mark)
  - (ii) toggenburg goat. (1/2mark)
- 4 State four reasons for castration in pig production. (2 marks)
- 5 State **four** characteristics of roughage livestock feeds. (2 marks)
- 6 State two functions of the crop in poultry digestive system. (1 mark)
- 7 State **four** roles of worker bees in a colony. (2 marks)
- 8 Give **four** reasons for controlling livestock diseases. (2 marks)
- 9 State **two** control measures for fowl pox disease in poultry.
- 10 State **one** function for each of the following:
  - (a) shovel; (1/2 mark)
  - (b) strip cup. (1/2mark)
- 11 Give **three** reasons for carrying out maintenance practices on a mower (1 1/2 marks)
- 12 Give **three** limitations of using solar power on the farm. (1/2 marks)
- 13 Why is it important to have a thermostat on a cooling system of a tractor engine? (1 mark)
- 14 Give two advantages of using a disc plough over a mouldboard plough in primary cultivation. (1 mark)
- 15 Name **four** tools that are used when laying concrete blocks during construction of a wall.(2 marks)
- 16 Why is it necessary to have guard rails in a farrowing pen? (1 mark)
- 17 Give **two** reasons for having a footbath in a cattle dip. (1 mark)
- 18 Distinguish between the following practices as used in livestock production;
  - (a) crutching and ringing in sheep management; (2 marks)
  - (b) cropping and harvesting in fish farming. (2 marks)
- 19 Give three ways in which infectious diseases can spread from one livestock to another within a farm. (1 Vi marks)

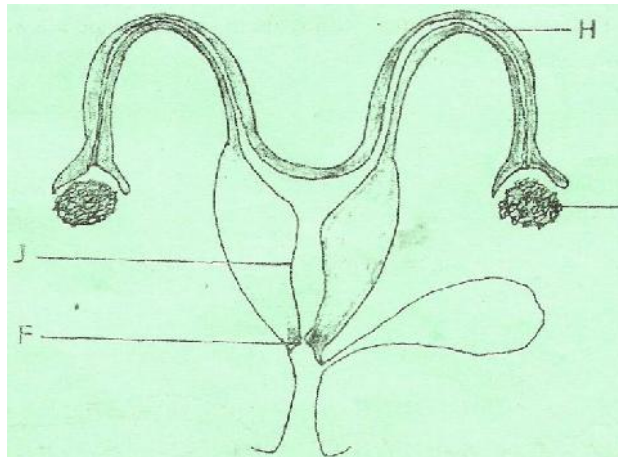
### SECTION B (20 marks)

Answer all the questions in this section in the spaces provided,

- 20 The following illustrations show the behaviour of chicks in a brooder. Study them carefully and answer the questions that follow.

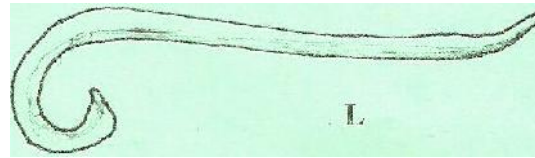
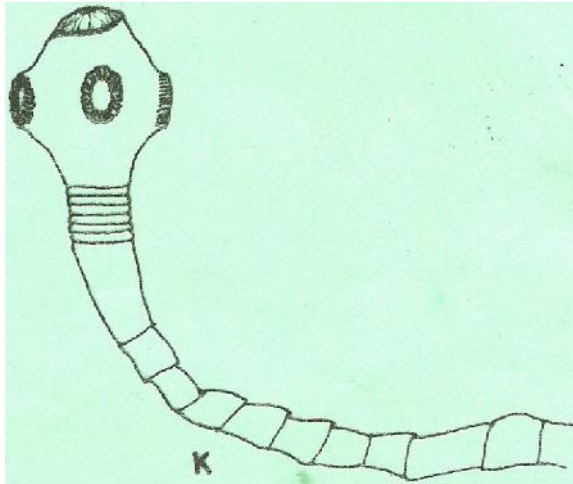


- (a) Explain the cause of behaviour observed in chicks for each of the illustrations labeled A, B and C. (3 marks)
- (b) Give a reason for making the brooder wail round in shape. (1 mark)
- 21 The diagram below shows the reproductive system of a cow. Study it carefully and answer the questions that follow.

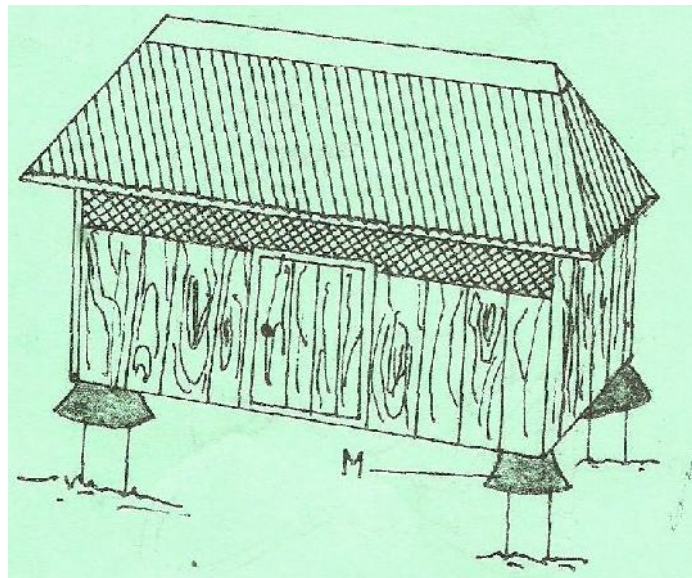


- (a) Name the parts labelled F and H, (2 marks).
- (b) Give **two** functions of the part labelled G (2 marks).
- (c) **Give** the role of the part labelled J. (2 marks)

Below are diagrams of internal parasites. Study them carefully and answer the questions that follow.

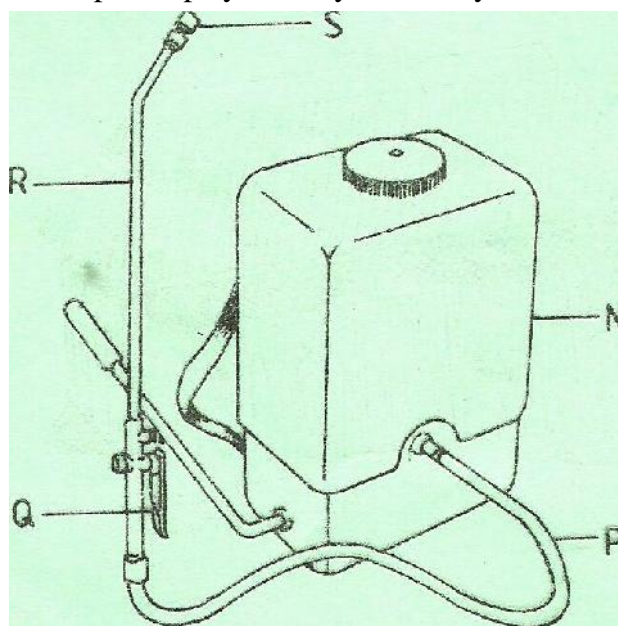


- (a) Identify the parasites labelled K and L.
  - (b) Name the developmental stage of the parasite labelled K in cattle muscles. (1/2 mark)
  - (c) Outline the procedure of handling a heifer when administering a liquid deworming drug to control the parasites illustrated above. (2 1/2marks)
- 23 Below is a diagram of a farm structure for storing grains. Study it carefully and answer the questions that follow.



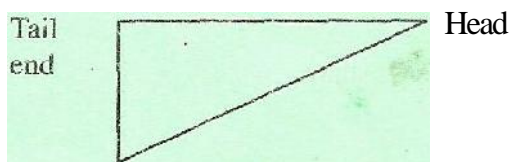
- (a) Identify the farm structure illustrated above.
- (b) State the function of the part labelled M. (1/2 mark)
- (c) State two maintenance practices that should be carried out on the farm structure illustrated above in readiness for grain storage. (1 mark)

23. Below is a diagram of a knapsack sprayer. Study it carefully and answer the questions that follow.



- (a) Name the parts labelled N, P, Q and R. (2 marks)  
 (b) State one function of the part labelled S. (1 mark)

25. The diagram below illustrates the general shape of a cattle breed. Study it carefully and answer the questions that follow.



- (a) Identify the type of breed illustrated by the above shape. (1/2 mark)  
 (b) Give an example of a breed in (a) above. (1/2 mark)  
 (c) State four physical characteristics of the type of breed identified in (a) above. (2 marks)

### SECTION C (40 marks)

Answer any **two** questions from this section in the spaces provided after question 28.

- 26 (a) Outline **five** advantages of artificial insemination in cattle management. (5 marks)  
 (b) Describe **ten** signs of trypanosomiasis (Nagana) disease in livestock. (10 marks)  
 (c) Explain **five** functions of water in nutrition. (5 marks)
- 27 (a) State the function of any **six** parts of a zero grazing unit in dairy farming. (6 marks)  
 (b) Explain how the power transmitted from a tractor engine is made available for use on the farm under the following subheadings:  
 (i) propeller shaft; (2 marks)  
 (ii) power take off (P.T.O) shaft; (2 marks)  
 (iii) hydraulic system. (2 marks)

- (c) Explain **eight** ways in which ticks can be controlled on a livestock farm. (8 marks)
- 28 (a) Describe **ten** physical characteristics a poultry farmer would use to identify poor layers from a flock of hens. (10 marks)
- (b) (i) Outline **three** characteristics of clean milk. (3 marks)
- (ii) Explain **seven** factors that affect milk composition in dairy fanning. (7 marks)