

## AGRICULTURE PAPER 2 2012 QUESTIONS

### SECTION A (30 marks)

*Answer ALL the questions in this section in the spaces provided.*

1. Apart from hides and skins, name the raw material obtained from each of the following livestock for the textile industry:
    - (a) goat..... (½ mark)
    - (b) sheep..... (½mark)
    - (c) rabbit..... (½ mark)
  2. Give **three** reasons for candling eggs in poultry production. (1½ marks)
  3. Name **two** nutritional diseases of cattle. (1 mark)
  4. State **two** advantages of housing calves singly in cattle management. (1 mark)
  5. Give **four** features of housing that help to control livestock diseases. (2 marks)
  6. Name **three** methods of harvesting fish in a pond. (1½ marks)
  7. State **five** methods of dehorning in cattle management. (2½ marks)
  8. Give the appropriate term that refers to each of the following:
    - (a) castrated chicken (½ mark)
    - (b) young one of a rabbit (½mark)
    - (c) mature male goat. (½mark)
  9. Give **three** ways in which farmers market beef cattle in Kenya. (1½ marks)
-

- 10 State **four** causes of egg eating in a flock of layers. (2 marks)
- 11 Name **two** practices that are carried out when preparing ewes for mating. (1 mark)
- 12 Give **four** reasons for identification in cattle management. (2 marks)
- 13 State **three** advantages of fold system in poultry rearing. (1½marks)
- 14 State **four** practices that immediately come after complete milking in a milking shade. (2 marks)

15 The following is a list of livestock diseases:

- brucellosis
- trypanosomiasis
- newcastle
- anthrax
- african swine fever
- black quarter.

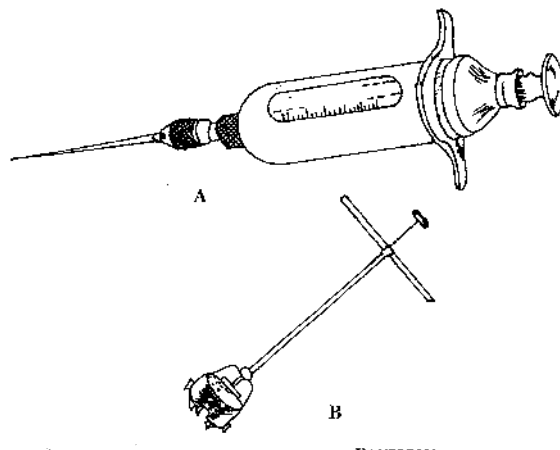
Which **two** diseases are

- (a) both bacterial and zoonotic? (1 mark)
- (b) caused by virus? (1 mark)
- 16 State **three** functions of a lubrication system on a tractor. (1½ marks)
- 17 Distinguish between the following terms as used in livestock health:
- (a) isolation and quarantine; (2 marks)
- (b) curative drug and prophylactic drug. (2 marks)

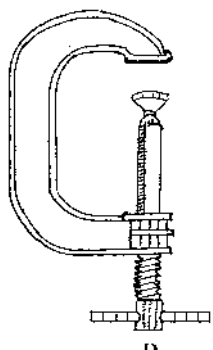
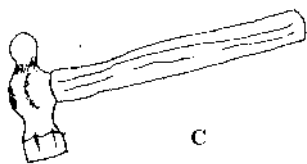
**SECTION B** (20 marks)

*Answer ALL the questions in this section in the spaces provided.*

18 Below are illustrations of farm tools and equipment.

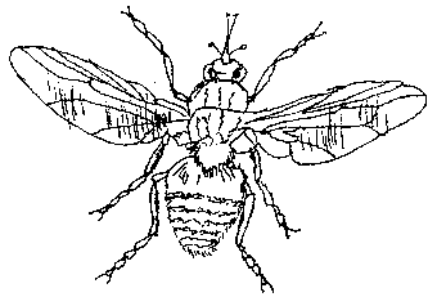


- (a) Identify the tool/equipment labelled A and B. (1 mark)
- A..... (1 mark)
- B..... (1 mark)
- (b) State **one** appropriate use of the tool labelled C. (1 mark)
- (c) Explain **two** maintenance practices for the tool labelled D. (2 marks)



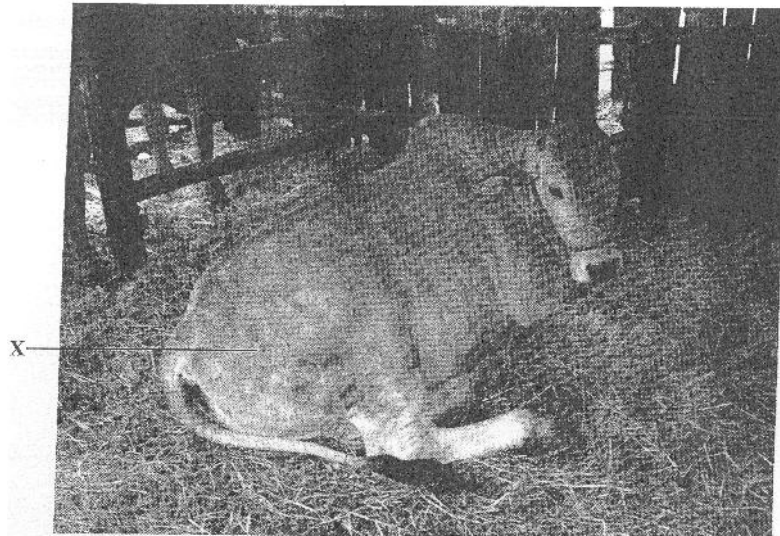
- a) Identify the tool/equipment labelled A and B. (1mark)  
A..... (1mark)  
B..... (1mark)
- b) State one appropriate use of the tool labelled C. (1mark)
- c) Explain two maintenance practices for the tool labelled D. (2marks)

19. The diagram below illustrates a livestock parasite.

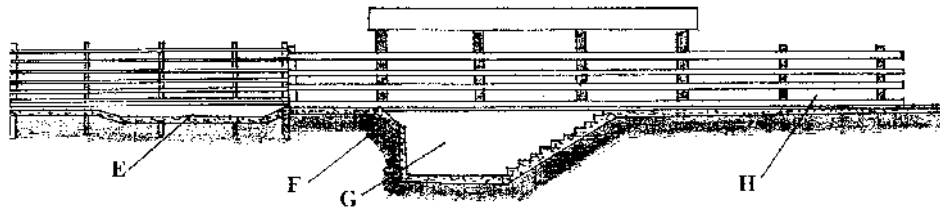


- a) Identify the parasite illustrated above. (1mark)
- b) State the major harmful effect of the parasite. (1mark)
- c) Explain four control measures for the parasite. (4marks)

20. The photograph below illustrates a method of identification labelled X in cattle.



- a) Name the identification method. (1mark)
  - b) Explain three disadvantages of the identification method. (3marks)
21. The illustration below shows a cross section of a cattle dip.



- a) Name the parts labelled E and G.  
E..... (1mark)  
G..... (1mark)
- b) State one use for each of the parts labelled E, F and G. (3marks)  
E.....  
F.....  
H.....

**SECTION C (40 marks)**

*Answer any TWO questions from this section in the spaces provided after question 24.*

- 22 (a) Describe the functions of the various types of pens in a piggery unit. (4 marks)
- (b) Describe the control measures for tapeworms (*Taenia spp*) in livestock. (6 marks)
- (c) Giving a relevant example in each case, describe the role of the various components of a balanced diet in livestock nutrition. (10 marks)
- 23 (a) Describe the management of one day old chicks in a brooder until they are eight weeks old. (12 marks)
- (b) Give the reasons why embryo transfer use should be encouraged in dairy cattle breeding. (8 marks)
- 24(a) Describe foot rot disease under the following sub-headings:
- (i) causal organism; (1 mark)
- (ii) signs of infection; (5marks)
- (ii) control measures. (4 marks)
- b) Explain the importance of each of the functional differences between a disc plough and a mouldboard plough in land preparation. (10 marks)