

312/2

GEOGRAPHY

Paper 2

Oct./Nov. 2013

2 ³/₄ hours

THE KENYA NATIONAL EXAMINATIONS COUNCIL

Kenya Certificate of Secondary Education

GEOGRAPHY

Paper 2

2 ³/₄ hours

Instructions to candidates

- (a) *This paper has two sections: A and B.*
- (b) *Answer all the questions in section A.*
- (c) *Answer question 6 and any other two questions from section B.*
- (d) *All answers must be written in the answer booklet provided.*
- (e) *This paper consists of 6 printed pages.*
- (f) *Candidates should check the question paper to ascertain that all the pages are printed as indicated and that no questions are missing.*
- (g) *Candidates should answer the questions in English.*



KNEC 30003014 KCSE

913038

© The Kenya National Examinations Council, 2013

Turn over

2
SECTION A

Answer all the questions in this section.

- 1 (a) Name the method of irrigation used in the Perkerra irrigation scheme. (1 mark)
- (b) State **three** factors that influenced the location of the Perkerra irrigation scheme. (3 marks)
- 2 State **four** effects of human encroachment into wildlife habitats. (4 marks)
- 3 (a) Name **two** countries to which Kenya exports petroleum products. (2 marks)
- (b) State **four** factors that influence external trade in Kenya. (4 marks)
- 4 (a) State **two** factors that lead to the development of nucleated settlement patterns. (2 marks)
- (b) Identify **two** differences in the functions of Nairobi and New York. (4 marks)
- 5 Identify **five** ways that are used to control floods in Kenya. (5 marks)



3
SECTION B

Answer question 6 and any other two questions from this section.

- 6 The table below shows the approximate population size of four districts in Nairobi in the year 2009.

Use it to answer question (a)

**POPULATION OF FOUR DISTRICTS
IN NAIROBI**

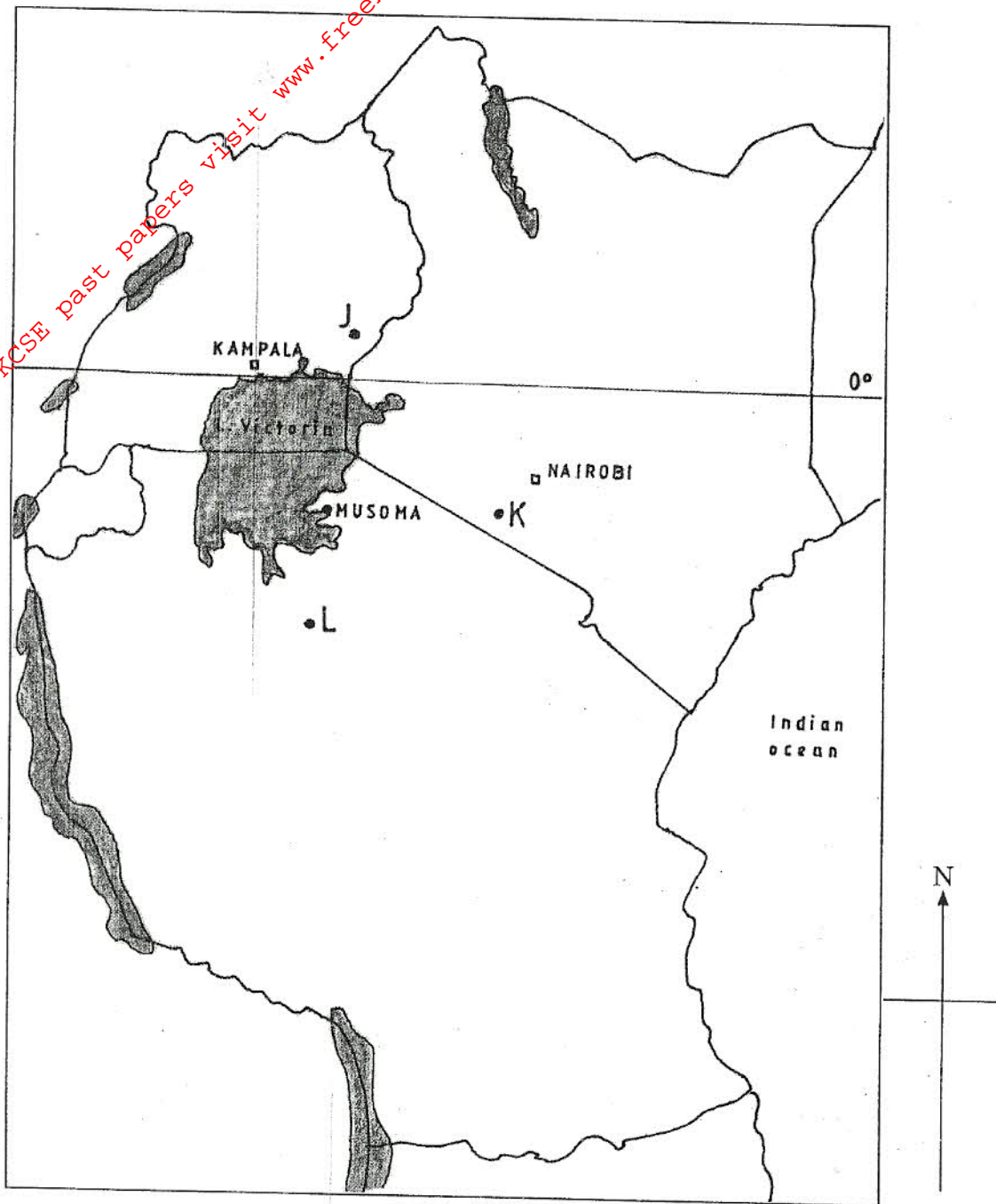
District	Population size
Nairobi West	685,000
Nairobi East	1,144,000
Nairobi North	1,062,000
Westlands	247,000
Total	3,138,000

Source: Kenya National Bureau of Statistics.

- (a) (i) Apart from pie charts, name **two** other statistical methods that can be used to represent the data in the table. (2 marks)
- (ii) Using a radius of 5 cm, draw a pie chart to represent the data in the table above. Show your calculations. (9 marks)
- (iii) Calculate the population growth rate of Nairobi over the 10 year period if the populations was approximately 2,143,000 in 1999. (2 marks)
- (b) Explain **two** factors that may have led to the large population increase in Nairobi between 1999 and 2009. (4 marks)
- (c) Explain **four** positive effects of low population growth in a country. (8 marks)



7 The map below shows the location of some minerals in East Africa.



For More Free KCSE past papers visit www.freekcsepapers.com



- (a) Name the minerals mined in the areas marked **J**, **K** and **L**. (3 marks)
- (b) Explain how the following factors influence the exploitation of minerals:
- (i) mode of occurrence of minerals; (4 marks)
- (ii) transport; (4 marks)
- (iii) level of technology. (4 marks)
- (c) Describe the opencast method of mining. (4 marks)
- (d) Explain **three** benefits of petroleum mining to the economies of Middle East Countries. (6 marks)
- 8 (a) (i) What is agriculture? (2 marks)
- (ii) Identify **four** characteristics of Plantation farming in Kenya. (4 marks)
- (b) Give **four** physical factors that influence the growing of tea in Kenya. (4 marks)
- (c) Explain **four** problems facing small scale tea farming in Kenya. (8 marks)
- (d) You plan to carry out a field study in a tea farm.
- (i) Give **four** reasons why you need a route map for the study. (4 marks)
- (ii) What information are you likely to gather about marketing of processed tea during the study? (3 marks)
- 9 (a) Identify **three** sources of renewable energy. (3 marks)
- (b) (i) Name **three** main Hydro Electric Power Stations along the River Tana. (3 marks)
- (ii) Apart from providing electric power, state **four** other benefits of the dams along the River Tana. (4 marks)
- (iii) Identify **two** problems that affect the production of power from the stations along River Tana. (2 marks)



- (c) Explain **four** measures the Government of Kenya has taken to conserve energy. (8 marks)
- (d) Some students carried out a field study on sources of energy by sampling the households around their school.
- (i) Identify **two** sampling techniques the students may have used during the study. (2 marks)
- (ii) Give **three** advantages of sampling the households for the study. (3 marks)
- 10 (a) Differentiate manufacturing industries from tertiary industries. (2 marks)
- (b) Explain why the Government of Kenya encourages the setting up of industries in rural areas. (8 marks)
- (c) Explain **four** factors that have contributed to the development of electronics industry in Japan. (8 marks)
- (d) You intend to carry out a field study in a nearby post office.
- (i) Identify **two** characteristics of a good hypothesis for the study. (2 marks)
- (ii) State **three** advantages of using the interview method to collect data during the study. (3 marks)
- (iii) Give **two** challenges facing postal services that you are likely to find out during the study. (2 marks)

THIS IS THE LAST PRINTED PAGE.



KNEC 30003014 KCSE

913038