

NAME: .....CLASS:.....ADM NO:.....

SIGNATURE:.....INDEX NO:.....

232/1  
PHYSICS  
PAPER 1  
JUNE 2016

## KASSU JET EXAMINATION - 2016

Kenya Certificate of Secondary Education  
Physics Paper 1

### Instructions to candidates

- This paper consists of two sections A and B.
- Answer **ALL** the questions in sections A and B in the spaces provided.
- **ALL** working **MUST** be clearly shown.
- Mathematical tables and silent electronic calculators may be used.
- Take: Acceleration due to gravity  $g = 10 \text{ ms}^{-2}$ .
- Atmospheric pressure = 76 cmHg
- Density of mercury  $\equiv 13600 \text{ kg/m}^3$

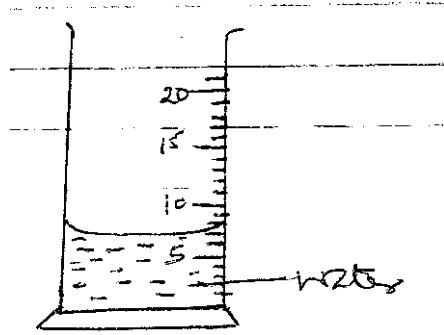
### For examiners use only

SECTION	QUESTION	MAX MARKS	CANDIDATE'S SCORE
A	1 – 11	25	
B	12 – 17	55	
TOTAL			

**SECTION A (25 MARKS)**

**Attempt all the questions in this section.**

1. The figure below shows a measuring cylinder with some water in it.



A metal cube of mass 18g is submerged in it. Given that the density of the metal is  $4.167 \text{ g/cm}^3$ , indicate the new level of the liquid. (2 mks)

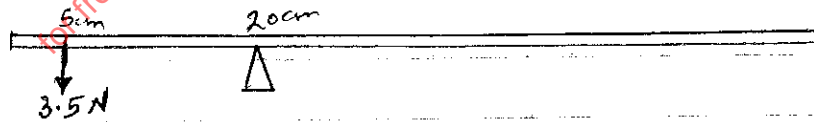
2. Explain how temperature affects surface tension. (2 mks)

.....  
.....  
.....

3. A drop of blue ink is introduced at the bottom of a beaker containing water. It is observed that after sometime, all the water in the beaker turns blue. Name the process that takes place. (1 mk)

.....

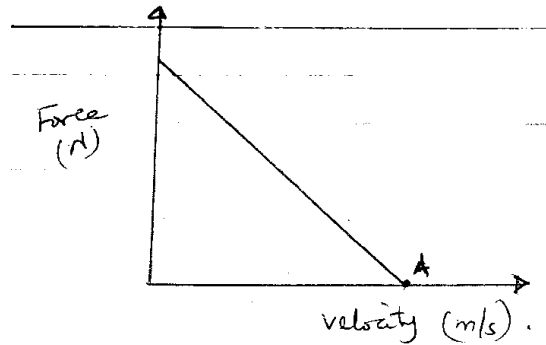
4. The figure below shows a uniform metre rule pivoted at the 20cm mark. It is balanced by a weight of 3.5N suspended at the 5cm mark.



Determine the weight of the metre rule. (3 mks)

.....  
.....  
.....  
.....  
.....

5. The diagram below shows a sketch graph of resultant force against velocity for a body falling through air.



- (a) Give the name given to the velocity of the body at point a. (1 mk)

.....

- (b) Explain why the resultant force is equal to zero for the velocity given in (a) above. (2 mks)

.....  
 .....  
 .....

6. A student dipped a mercury thermometer into a very hot liquid.

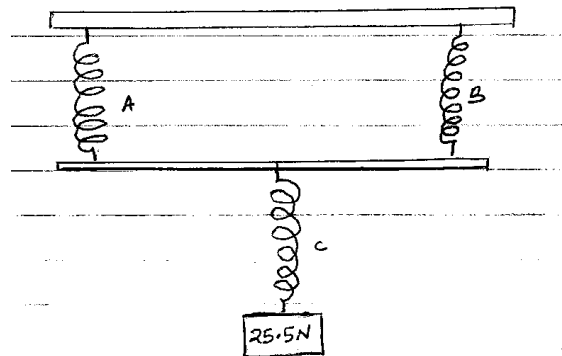
- (a) State what is observed. (1 mk)

.....

- (b) Explain observation in (a) above. (1 mk)

.....  
 .....

7. Three identical springs A, B and C are used to support 25.5N weights as shown below.



If the weight of the horizontal bar is 2.5N, determine the extension of each spring given that 6N causes an extension of 2 cm. (3 mks)

.....

.....

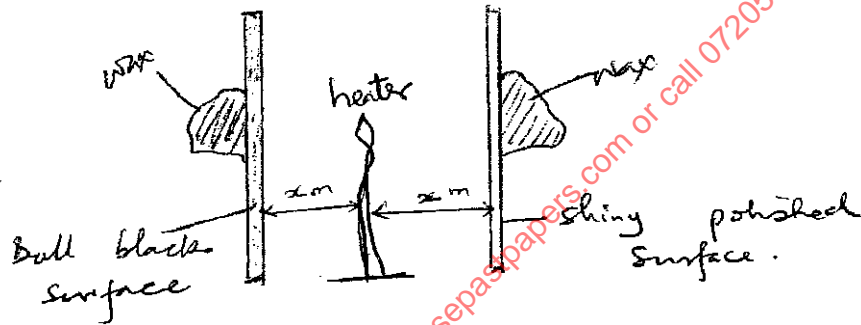
.....

.....

.....

.....

8. The diagram below shows the effect of heat from the heater on two surfaces ..... surface.



(i) How does the heat from the heater reach the surface? (1 mk)

.....

(ii) State what is observed from the set up after a few minutes. (1 mk)

.....

9. Trees planted along or near the road seem to bend towards the road. State and explain the observation. (2 mks)

.....

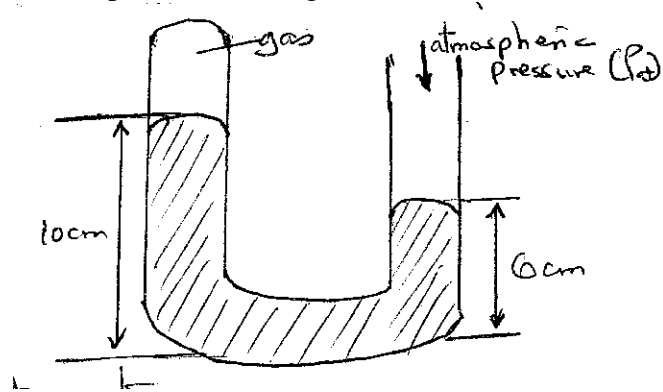
.....

.....

.....

.....

10. Figure below shows a u-tube upon which a gas has been enclosed on one end with mercury in it. Calculate the pressure of the gas.



.....

.....

.....

.....

.....

.....

11. State two sources of errors in an oil drop experiment. (2 mks)

.....

.....

.....

.....

**SECTION B (55 MARKS)**

**Attempt all the questions in this section.**

12. (a) (i) Define the term angular velocity ( $\omega$ ). (1 mk)

.....

.....

(ii) A body in a circular path is said to be accelerating and yet it moves in a constant speed. Explain. (1 mk)

.....

.....

(c) A stone of mass 500g is attached to a string of length 50cm which can break when the tension exceeds 20N. The stone is whirled by a student until the string breaks at a point 100 cm above the ground. (Take  $g$ , as  $10 \text{ m/s}^2$ ).

(i) In what position does the string break. (1 mk)

.....  
.....

(ii) Calculate the angular velocity at which the string breaks. (3 mks)

.....  
.....  
.....  
.....  
.....  
.....

(iii) Time taken by the stone to reach the ground. (3 mks)

.....  
.....  
.....  
.....  
.....  
.....

(iv) Distance from the feet of the student to the point the stone strikes the ground. (2 mks)

.....  
.....  
.....  
.....

for free past papers visit: [www.freekcepastpapers.com](http://www.freekcepastpapers.com) or call 0720502479

13. (a) A hydraulic lift is used to raise a load of 100 kg through a height of 2.0 m. the radius of the effort piston is 1.6cm while the load piston has a radius of 8.0cm. If the machine is 75% efficient; calculate:

(i) the velocity ratio. (2 mks)

.....  
.....  
.....

(ii) mechanical advantage (1 mk)

.....  
.....

(iii) effort required (1 mk)

.....  
.....

(iv) energy wasted in using the machine (2 mks)

.....  
.....  
.....

(b) A block and tackle pulley system is used to lift a mass of 200 kg. If the machine has a velocity ratio of 5, and efficiency of 80%;

(i) Sketch in the space provided below the possible arrangement of the system. (2 mks)

- (ii) Determine the effort required to lift the load. (2 mks)

.....

.....

.....

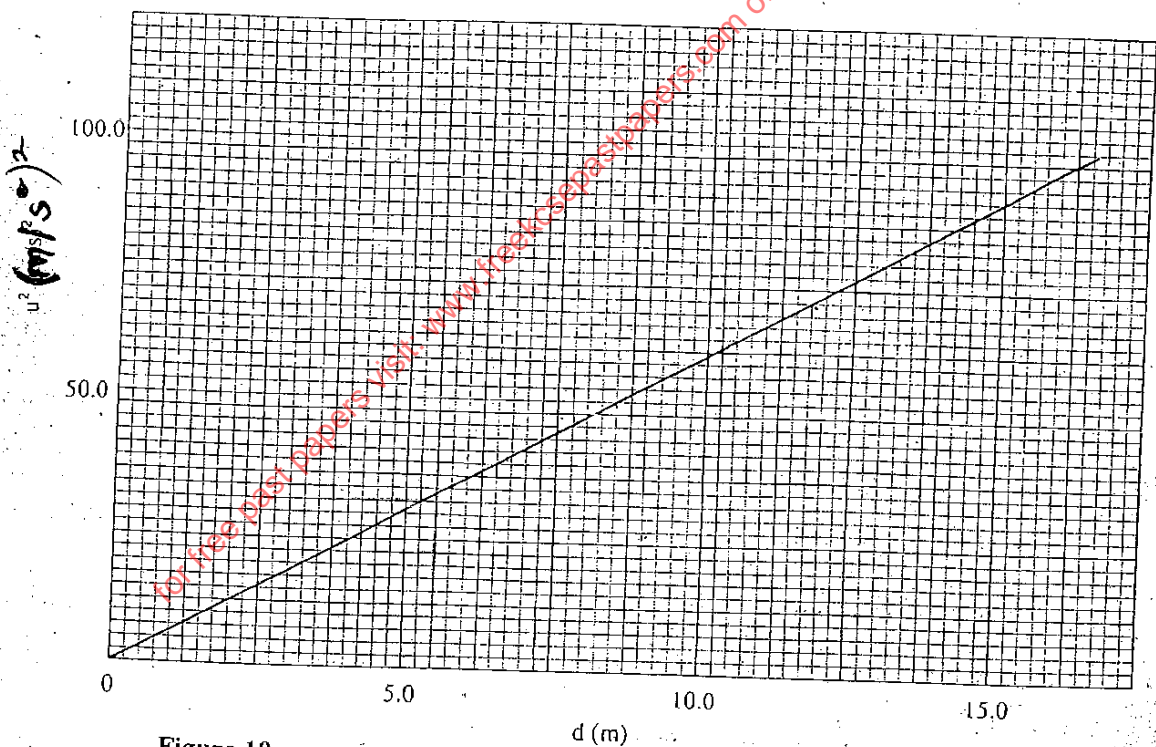
.....

14. (a) State Newton's first law of motion. (1 mk)

.....

.....

- (b) A wooden block resting on a horizontal bench is given an initial velocity,  $U$ , so that it slides on the bench surface for a distance,  $d$ , before coming to a stop. The values of,  $d$ , were measured and recorded for values of initial velocity. The figure below shows a graph of  $U^2$  against  $d$ .



- (i) Determine the slope of the graph. (3 mks)
- (ii) Given that  $U^2 = 20 kd$ , where  $K$  is a constant for the bench surface, determine the value of  $K$  from the graph. (3 mks)



(iii) State how the value of K would be affected by a change in the roughness of the bench surface. (2 mks)

.....

.....

.....

.....

(c) A car of mass 800 kg starts from rest and accelerates at  $1.2 \text{ ms}^{-2}$ . Determine its momentum after it has moved 400m from the starting point. (4 mks)

.....

.....

.....

.....

.....

.....

.....

.....

.....

15. 300g of ice at  $0^{\circ}\text{C}$  is dropped into a copper calorimeter containing warm water of mass 60g at  $60^{\circ}\text{C}$ . It's observed that only 80% of ice melted.

(Take: Specific heat capacity of water =  $4200 \text{ J kg}^{-1} \text{ K}^{-1}$   
Heat capacity of copper =  $400 \text{ J K}^{-1}$ )

(a) Determine the final temperature of the mixture. (1 mk)

.....

.....

.....

(b) Determine the heat lost by calorimeter. (2 mks)

.....

.....

.....

.....

.....

(c) Determine the heat lost by warm water. (2 mks)

.....  
.....  
.....  
.....  
.....  
.....

(d) Determine the specific latent heat of fusion of ice. (3 mks)

.....  
.....  
.....  
.....  
.....  
.....

(e) It's observed that if the temperature of warm water used was  $80^{\circ}\text{C}$ , then all the ice could have melted. What would be the final temperature of the mixture? Use the value of specific latent heat of fusion obtained in (d) above. (3 mks)

.....  
.....  
.....  
.....  
.....  
.....

16. (a) A concrete block of volume,  $V$ , is totally immersed in sea water of density,  $S$ . Write an expression for the upthrust on the block. (1 mk)

.....  
.....

(b) A certain solid of volume  $50\text{ cm}^3$  displaces  $10\text{ cm}^3$  of kerosene (density  $800\text{ kg/m}^3$ ). When floating. Determine the density of the solid. (4 mks)

.....  
.....  
.....

.....  
.....  
.....

(c) State the condition necessary for a body to float in a fluid. (1 mk)

.....  
.....

17. (a) A mercury thread 200 mm long traps a gas in a long glass tube. The length of the gas column is 100 cm when the tube is held horizontally. The atmospheric pressure is 750 mmHg. Calculate the length of the gas column when the tube is held vertically with the open end facing downwards. (3 mks)

.....  
.....  
.....  
.....  
.....

(b) State Boyle's law. (1 mk)

.....  
.....

(c) 250 cm<sup>3</sup> of a gas is collected at a pressure of 900 mmHg and 27<sup>0</sup>c temperature. Determine the volume of this gas if the pressure is reduced to 500 mmHg and temperature 19<sup>0</sup>c. (2 mks)

.....  
.....  
.....  
.....

***This is the last printed page.***