

441/2

HOME SCIENCE

CLOTHING CONSTRUCTION

PAPER 2

PRACTICAL

CONFIDENTIAL

4MCK JOINT EXAM - 2016

MATERIALS PROVIDED

1. Plain light weight cotton fabric 65cm x 90cm wide.
2. Sewing thread to match the fabric
3. One large envelope.

for more free past papers visit: www.freekscpastpapers.com

441/2

HOME SCIENCE CLOTHING CONSTRUCTION

PAPER 2

(PRACTICAL)

2¹/₂ HOURS

4MCK

HOME SCIENCE (CLOTHING CONSTRUCTION)

PAPER 2

PRACTICAL

2¹/₂ HOURS

Instruction to Candidates.

1. This paper consists of 3 printed pages.
2. Candidates should check the question paper to certain that all pages are printed as indicated and that no questions are missing.

A pattern of a dress is provided. You are advised to study the sketches, instruction and the layout carefully before you begin the test.

Materials provided.

1 Pattern pieces

- A. Dress Back
- B. Dress front
- C. Front Yoke
- D. Sleeve
- E. Sleeve binding
- F. Back Facing
- G. Front facing

2. Plain light weight cotton fabric 6.5cm long by 90cm wide.

3. Sewing thread to match the fabric

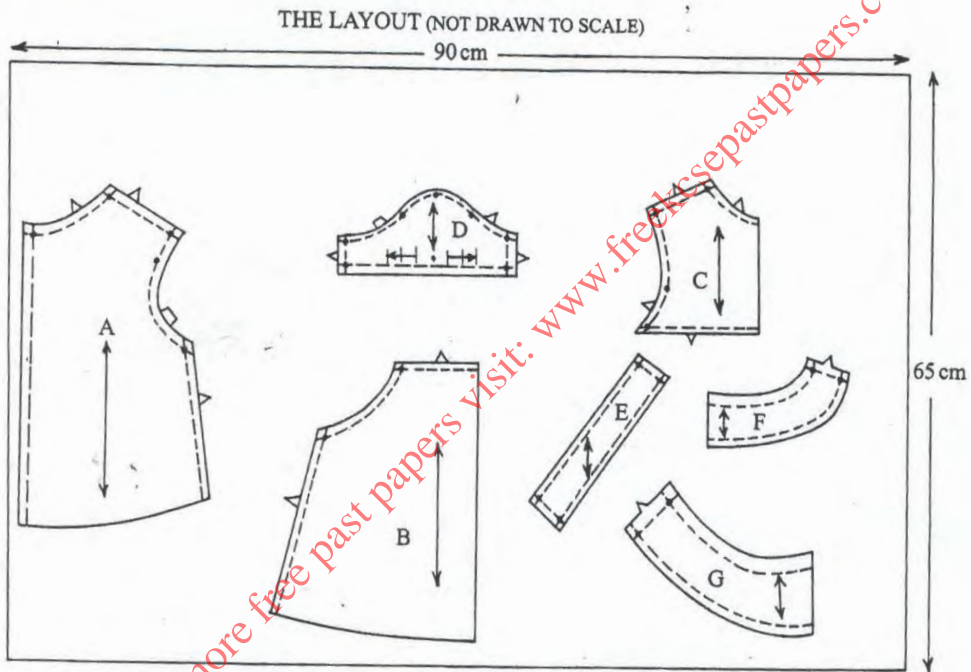
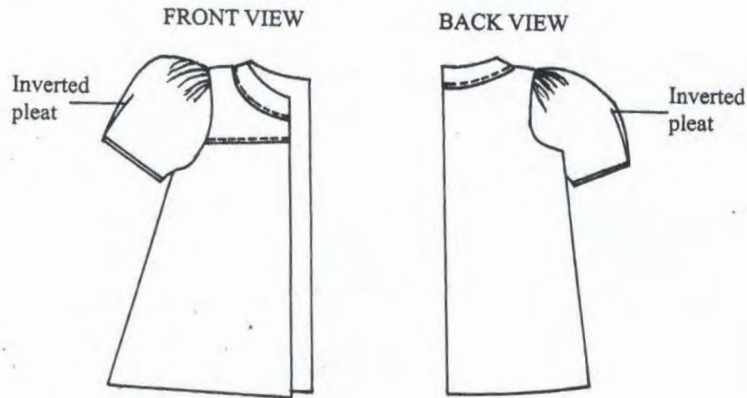
4. One large envelope

THE TEST

Using the material provided cut out and make the **RIGHT HALF** of a child's dress to show the following processes:

- a) Attaching the front to the using an overlaid seam. Neaten **half** of the seam using overcasting stitches:
- b) Joining of the shoulder seam using an open seam (do not neaten)
- c) Joining of the side seam using an open seam
- d) Preparing of the sleeve.
 - i) Making an inverted pleat:
 - ii) Joining the underarm seam using an open seam (**do not neaten**)
 - iii) Attaching the binding and holding it using slip hemming (slip hem **half** the binding).
- e) Attaching of sleeve onto the garment (**do not trim or neaten**):
- f) Attaching the facing on the neckline.

At the end of the examination, firmly sew on your work, on a single fabric, a label bearing your name and index number. Remove needles, and pins from your work then fold your work neatly and place it in the envelope provided. Do not put scraps of fabric in the envelope.



THIS IS THE LAST PRINTED PAGE.