

NAME..... INDEX NO.....

443/2
AGRICULTURE
PAPER 2
JULY/AUGUST, 2016
TIME: 2 HOURS

CANDIDATE'S SIGN.....

DATE.....

**KIRINYAGA CENTRAL SUB-COUNTY EFFECTIVE FORTY
JOINT EXAMINATION – 2016**

**Kenya Certificate of Secondary Education
AGRICULTURE
PAPER 2
TIME: 2 HOURS**

INSTRUCTIONS TO CANDIDATES:

- (a) Write your **name** and **index number** in the spaces provided above.
- (b) Sign and write the date of examination in the spaces provided above.
- (c) This paper consists of **THREE** Sections **A**, **B** and **C**.
- (d) Answer all questions in Section **A** and **B**
- (e) Answer any **Two** in Section **C**.
- (f) All answers must be written in the spaces provided.
- (g) This paper consists of **12** printed pages.
- (h) Candidates should check the question paper to ascertain that all the pages are printed as indicated and that no questions are missing.

FOR EXAMINER'S USE ONLY

Section	Question	Maximum Score	Candidate's Score
A	1 - 18	30	
B	19 – 22	20	
C	23 – 25	20	
		20	
Total Score		90	

SECTION A: (30 MARKS)

Answer all questions in this section in the spaces provided.

1. Name **three** meat breeds of sheep. (1½ marks)

.....

.....

.....

2. Name **two** lubricants used in a tractor engine. (1 mark)

.....

.....

3. Differentiate between oestrus cycle and heat period. (1 mark)

.....

.....

.....

.....

4. Mention any **three** signs of heat in rabbits. (1½ marks)

.....

.....

.....

.....

5. State **four** functions of harrows as farm implement. (2 marks)

.....

.....

.....

for free past papers visit: www.freekcepastpapers.com or call 0720502479

6. State **two** field conditions under which a fork jembe would be more suitable for use than a jembe. (1 mark)

.....

.....

.....

7. (a) Give a reason why ruminant animals are able to digest napier grass. (1 mark)

.....

.....

.....

(b) List the **four** compartments of a ruminant stomach in an orderly sequence. (2 marks)

.....

.....

.....

.....

8. Give the meaning of the following terms as used in livestock health.

(a) Quarantine. (1 mark)

.....

.....

.....

(b) Isolation. (1 mark)

.....

.....

.....

for free past papers visit: www.freekcsepastpapers.com or call 0720502479

(c) Zoonotic disease. (1 mark)

.....
.....
.....

9. State **four** reasons why honey harvesting is discouraged at night. (2 marks)

.....
.....
.....
.....

10. Differentiate between cropping and harvesting in fish keeping. (1 mark)

.....
.....
.....
.....

11. Give the functions of the following farm tools and equipment. (1/2 mark)

(a) Center punch. (1/2 mark)

.....
.....
.....

(b) Wire strainer. (1/2 mark)

.....
.....
.....

for free past papers visit: www.freekcepastpapers.com or call 0720502479

12. State **four** reasons why piglets should be weighed immediately after birth and weaning. (2 marks)

.....

.....

.....

.....

13. (a) Name **two** categories of vaccines. (1 mark)

.....

.....

(b) Give **two** ways of administering vaccines in livestock. (1 mark)

.....

.....

14. Give **four** advantages of indigeneous cattle over the exotic cattle breeds. (2 marks)

.....

.....

.....

.....

15. State **two** ways in which proper feeding contributes to disease control in livestock. (1 mark)

.....

.....

16. (a) List down **four** farm operations that are powered by engines. (2 marks)

.....

.....

.....

.....

for free past papers visit: www.freekcepastpapers.com or call 0720502479

(b) Name **two** common types of mowers. (1 mark)

.....
.....

17. State **three** sources of water in the animal's body. (1½ marks)

.....
.....
.....

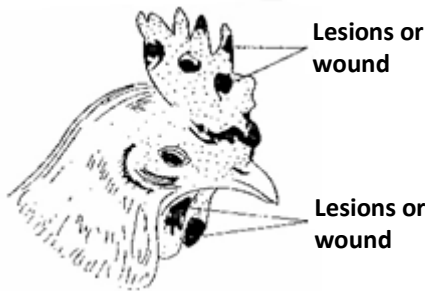
18. Which camel breed has two humps? (½ mark)

.....

SECTION B: (20 MARKS)

Answer all questions in this section in the spaces provided.

19. The following diagram illustrate symptoms of a disease in poultry. Study it carefully and answer the question that follows.



(a) Identify: (i) The disease. (½ mark)

.....

(ii) The causal organism. (½ mark)

.....

(b) State **two** other symptoms of the disease apart from lesion. (2 marks)

.....
.....
.....

for free past papers visit: www.freekcepastpapers.com or call 0720502479

(c) State **two** control measures for the disease. (2 marks)

.....

.....

.....

20. The following illustration represents a certain practice carried out in sheep management. Study this illustration and answer the questions that follows:



(a) Identify the practice illustrated above. (1 mark)

.....

(b) Name the tool being used in carrying out the practice illustrated above. (1 mark)

.....

(c) State **two** precautions that should be taken when carried out the above practice. (2 marks)

.....

.....

.....

.....

(d) How often should the practice be carried out. (1 mark)

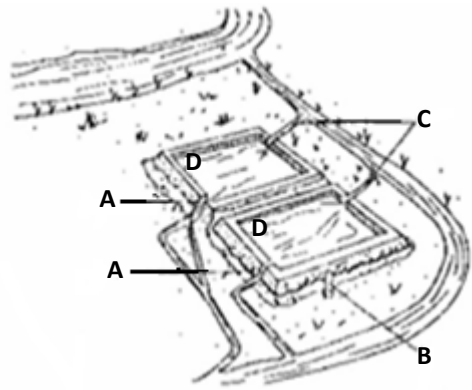
.....

.....

.....

for free past papers visit: www.freekcsepastpapers.com or call 0720502479

21. Below is an illustration of a fish pond. Study it carefully and then answer the questions that follow.



(a) Give the reasons why part **D** is usually deeper than the rest of the pond. (1 mark)

.....

.....

.....

(b) Name the parts labelled. (1½ marks)

A

B

C

(c) Give **two** reasons why a fence should be constructed around the fish pond. (1 mark)

.....

.....

.....

(d) State **three** maintenance practices that should be carried out on this fish pond apart from fencing. (1½ marks)

.....

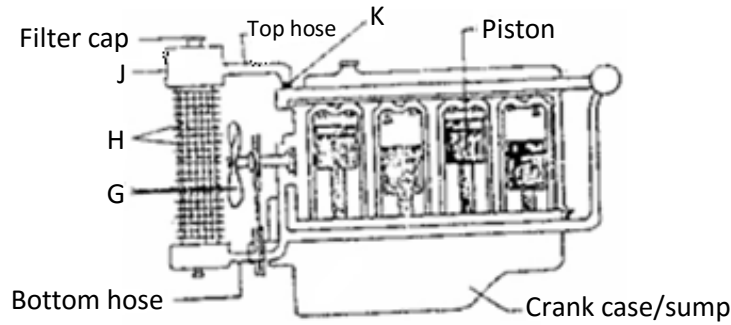
.....

.....

.....

for free past papers visit: www.freekcepastpapers.com or call 0720502479

22. The diagram below shows the cooling system of a tractor engine. Study it carefully and answer the questions that follow.



(a) Name the parts labelled. (2 marks)

G **H**

J **K**

(b) State the functions of the parts labelled **G**, **J** and **K** in the cooling system. (3 marks)

G

.....

J

.....

K

.....

SECTION C: (40 MARKS)

Answer any two questions from the section.

- 23. (a) Describe the management of a sow during parturition. (10 marks)
- (b) Outline **five** control measures of cannibalism in poultry keeping. (5 marks)
- (c) Explain the precautions observed in handling of bees. (5 marks)

24. (a) Describe the lifecycle of a three host tick. (5 marks)
(b) Give **six** importance of keeping animals healthy. (6 marks)
(c) Explain **nine** factors considered when selecting livestock for breeding. (9 marks)
25. (a) Describe the procedure for establishing a barbed wire fence. (7 marks)
(b) State **five** advantages of a spray race. (5 marks)
(c) (i) Give **five** maintenance practices of a trailer. (5 marks)
(ii) Mention **three** advantages of natural calf rearing. (3 marks)

.....

.....

.....

.....

.....

.....

.....

.....

.....

.....

.....

.....

.....

.....

.....

.....

.....

.....

.....

.....

.....

.....

for free past papers visit: www.freekcsepastpapers.com or call 0720502479

.....

.....

.....

.....

.....

.....

.....

.....

.....

.....

.....

.....

.....

.....

.....

.....

.....

.....

.....

.....

.....

.....

.....

.....

.....

.....

.....

.....

.....

for free past papers visit: www.freekcepastpapers.com or call 0720502479

.....

.....

.....

.....

.....

.....

.....

.....

.....

.....

.....

.....

.....

.....

.....

.....

.....

.....

.....

.....

.....

.....

.....

.....

.....

.....

.....

for free past papers visit: www.freekcsepastpapers.com or call 0720502479