

# **GATUNDU JOINT EVALUATION**

**441/2  
HOMESCIENCE  
(CLOTHING CONSTRUCTION)  
PAPER 2  
PRACTICAL**

**GATUNDU JOINT EVALUATION EXAMINATION 2016  
KENYA NATIONAL CERTIFICATE OF SECONDARY EDUCATION**

**CLOTHING CONSTRUCTION**

## **INSTRUCTION TO SCHOOLS**

You are advised to provide each student with the following items

1. Plain light weight cotton fabric 65cm long by 90cm wide.
2. Sewing thread to match the fabric.

**441/2  
HOME SCIENCE  
(CLOTHING CONSTRUCTION)  
PAPER 2  
PRACTICAL  
JULY-AUGUST 2016  
2 ½ HOURS**

**GATUNDU JOINT EVALUATION  
HOME SCIENCE  
(CLOTHING CONSTRUCTION)  
PAPER 2  
2 ½ HOURS.**

A pattern of a child's dress bodice is provided. You are advised to study the sketches, the question paper and the layout before you begin the test.

**1. MATERIALS PROVIDED.**

- A Front bodice
- B Back bodice
- C Sleeve
- D Midriff
- E Front neck facing.
- F back neck facing
- G Sleeve opening facing
- H Sleeve binding.

**NB:        Interfacing for midriff is cut with piece D from the same fabric**

- 2. Light-weight plain cotton fabric 65cm long by 90cm wide.
- 3. Sewing thread to match the fabric.

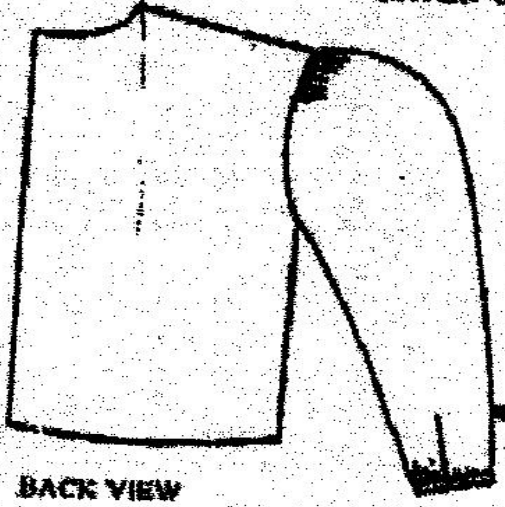
**THE TEST.**

Using the materials provide, cut out and make the right half of a child's dress bodice as shown in the sketch below to show the following

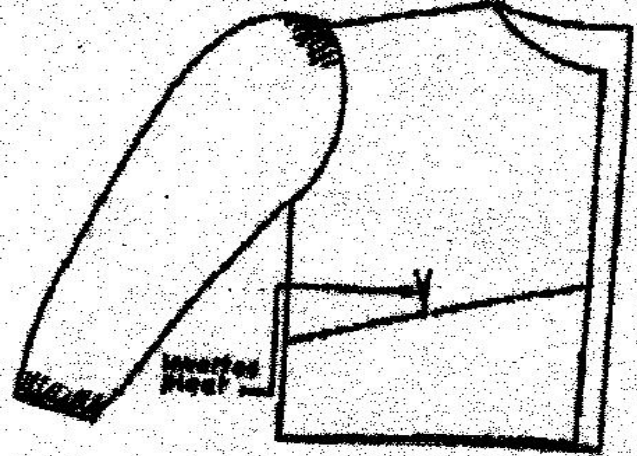
- (a) The making of the inverted pleat on the front bodice.
- (b) The attachment of the lined interfaced midriff to the front bodice.
- (c) The working of a machine fell seam at the shoulder.
- (d) The neatening of the hack opening facing.
- (e) The joining of the front and back neck facings at the shoulder.
- (f) The attaching of the neckline facing sandwiching its centre back between the garment and the back facing.
- (g) The making of an unneatened open seam at the side.
- (h) The preparation of the faced sleeve.
- (j) The making of an unneatened seam at the under arm.
- (j) The binding of the lower edges of the sleeve.
- (k) The attachment of the sleeve to the bodice and the neatening of half of the armhole seam only.

At the end of the examination firmly sew out your work, on a single fabric, a label bearing your name and index number. Remove the needle and pins from your work. Then fold your work carefully and place into the envelope provided. Do not put scraps of materials in the envelope.

### CHILD'S DRESS BODICE



BACK VIEW



FRONT VIEW

### THE LAYOUT (NOT TO SCALE)

