

Name Index No.

School Candidate's Signature

511/3

Date

MUSIC

Paper 3

July/August 2016

Time: 2½ Hours

NTIMA, NYAKI AND MUNICIPALITY CLUSTER EVALUATION 2016
Kenya Certificate of Secondary Education

MUSIC
Paper 3
July/August 2016
Time: 2½ Hours

INSTRUCTIONS TO CANDIDATES

- * Write your name and index number in the spaces provided above.
- * Sign and write the date of the examination.
- * Answer ALL questions in this paper.
- * All answers must be written in the spaces provided.
- * Answer all the questions in English

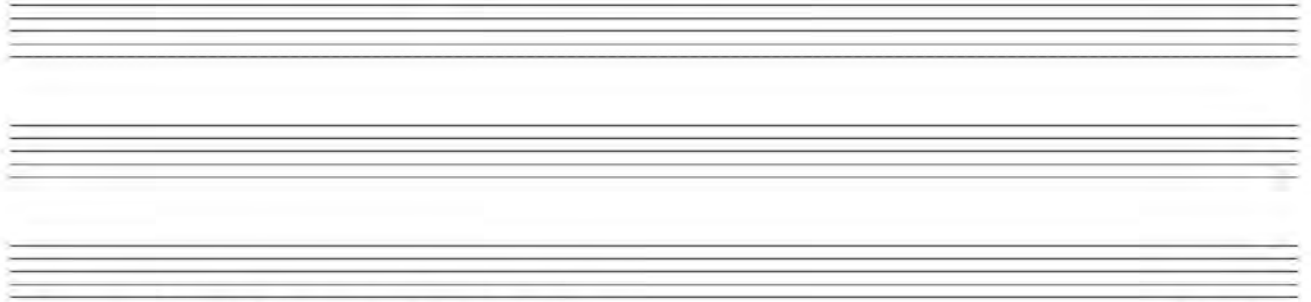
For Examiner's Use only

| Section | Question | Maximum score | Candidate's score |
|-------------------|----------|---------------|-------------------|
| A | 1 (a) | 8 | |
| | 1 (b) | 7 | |
| | 2 | 15 | |
| B | 3 | 14 | |
| | 4 | 14 | |
| | 5 | 10 | |
| | 6 | 10 | |
| | 7 | 06 | |
| C | 8 | 16 | |
| TOTA SCORE | | 100 | |

for more free papers visit: www.freeksepastpapers.com or call 0720502479

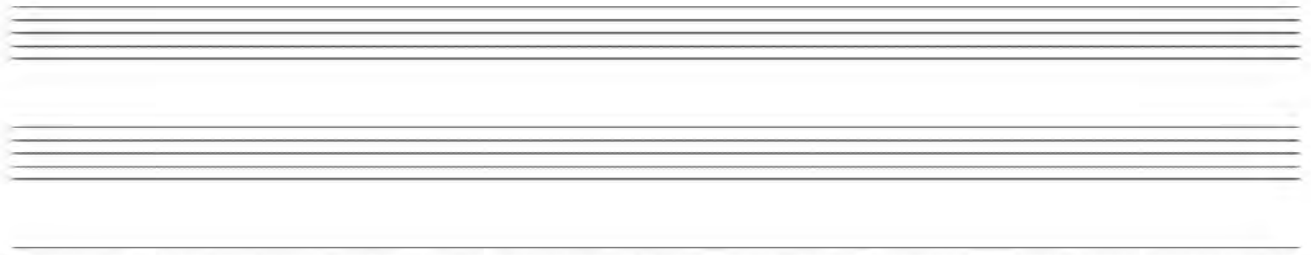
SECTION A : BASIC SKILLS (30 MARKS)

1. a) Continue the following opening to make a melody of sixteen bars for voice with a modulation to the relative major before returning to the tonic key. Incorporate syncopation. (8 marks)



- b) Compose a melody basing on the text below. (7 marks)

Spring the sweet spring,
Is the year's pleasant king,
Then blooms each thing,
Then maides dance in a ring.



2. Harmonize the following melody for Soprano, Alto, Tenor and Bass (SATB). Choose appropriate chords from I, II, IV, V and VI. Make use of the passing note. (15 marks)



SECTION B : HISTORY AND ANALYSIS (54 MARKS)

3. AFRICAN MUSIC

- a) i) Identify two occasions when solo songs are performed. (2 marks)

.....

 ii) Outline four characteristics of African music. (4 marks)

.....

 iii) Explain two causes of harmony in African music. (2 marks)

.....

 b) Complete the table below, number one has been done for you. (4 marks)

| | FLUTE | COMMUNITY | HOW HELD |
|---|-------|-----------|--------------------|
| c) Isukuti is one of the Kenyan traditional dances. | | | Vertical (oblique) |
| i) Name the community which traditionally performs the dance. | | | |
| ii) Ekerongwe | | | |
| | | | |
| iii) Ebune | | | |
| | | | |
| ii) Who are the participants in the dance ? | | | |
| iv) Ekipiswi | | | |
| v) Murenge | | | |

4. WESTERN MUSIC

Answer any two of the following questions (a), (b), (c) and (d).

a) THOMAS TALLIS

i) Outline 3 factors which influenced Tallis to develop as a musician. (3 marks)

.....

 ii) Thomas Tallis composed 17 motets together with William Byrd.
 Give the title of the motets. (1 mark)

.....

 For what purpose were the motets. (1 mark)

.....

 What is the significance of 17 in the motets ? (1 mark)

.....
.....
iii) Apart from motets, name any other work by Thomas Tallis. (1 mark)

b) WOLFGANG AMEDEUS MOZART

i) Name the composer whom Mozart met in Paris and got influenced by. (1 mark)

ii) Define the term serenade. (1 mark)

.....
.....
Give any title an outstanding serenade by Mozart. (1 mark)

iii) State four contribution of Mozart to church music. (4 marks)

c) ROBERT SCHUMANN

i) What type of work is paradise and the Peri ? (1 mark)

ii) Define opera. (1 mark)

.....
.....
Name an opera by Schumann. (1 mark)

iii) For what medium is “Abegg variations” (1 mark)

iv) State three ways in which Clara enhanced Schumann’s musical progress. (3 marks)

for more free papers visit: www.freekcepastpapers.com or call 0720502479

d) AARON COPLAND

i) Name Copland's nationality. (1 mark)

.....

ii) Give two appointments which Copland received. (2 marks)

.....

.....

iii) Outline four influences on Copland as a composer. (4 marks)

.....

.....

.....

.....

5. PRESCRIBED AFRICAN TRADITIONAL MUSIC

Ibodi dance of the Bakhayo by Busia municipal cultural troupe PPMC recording.

i) Name the members of the ensemble in the recording. (2½ marks)

.....

.....

.....

ii) Describe the soloist in terms of gender. (½ mark)

.....

iii) Describe the musical elements of the opening sections. (4 marks)

.....

.....

.....

.....

iv) How does the horn feature in the recording? (2 marks)

.....

v) Give the local name of the horn in the recording. (1 mark)

.....

6. PRESCRIBED WESTERN MUSIC

Rondo Alla tuca by Mozart

i) Name the key to which the music modulates to at bar 5. (1 mark)

.....
ii) Outline four ways in which the second subject contrasts with the first subject in exposition.
.....
.....
.....
.....

iii) Explain why this work ends in key A major instead of A minor. (2 marks)

.....
.....
.....

iv) Define three outstanding compositional devices which Mozart has used in this composition. (3 marks)

.....
.....
.....

7. Study the melody below and answer questions that follow.

Air from the peasant cantata. Bach

for more free papers visit: www.freekcepapers.com or call 0720502479

i) Give two bar ranges similar to bar 1 and 2. (2 marks)

ii) Point out an example of a sequence in reference to bar no. (1 mark)

iii) How does the music at bar 10-13 differ from 1-5? (2 marks)

iv) Name the cadence at bar 19. (1 mark)

8. a) Define an ornament. (1 mark)

b) Transpose the following melody a minor 3rd up prefix the new key signature. (3 marks)

c) Give the meaning of the following terms. (4 marks)

i) Nyaduong

.....

ii) Kimeng'eng

.....

iii) Piano trio

.....

iv) A ledger line

.....

d) i) Identify any three parts of isukuti and state how each of them contribute to sound production.

(3 marks)

A musical staff in treble clef with a key signature of one flat (Bb) and a time signature of 3/4. The melody consists of the following notes: G4 (quarter), A4 (quarter), Bb4 (quarter), A4 (quarter), G4 (quarter), F4 (quarter), E4 (quarter), D4 (quarter), C4 (half). The piece ends with a double bar line.

ii) Define **D.C El fine**. (1 mark)

.....

.....

iii) Rewrite the following melody a minor 3rd down in alto cleff. (4 marks)

A musical staff in treble clef with a key signature of one flat (Bb) and a time signature of 2/4. The melody consists of the following notes: G4 (quarter), A4 (quarter), Bb4 (quarter), A4 (quarter), G4 (quarter), F4 (quarter), E4 (quarter), D4 (quarter), C4 (half). The piece ends with a double bar line.

for more free papers visit: www.freeksepastpapers.com or call 0720502479