

441/2
HOME SCIENCE
(CLOTHING CONSTRUCTION)
PAPER 2
JUNE, 2017

MID -TERM EXAMINATIONS
K.C.S.E TRIAL EXAMINATION
441/2
HOME SCIENCE
CLOTHING AND CONSTRUCTION
PAPER 2

A pattern of a child's dress is provided. You are advised to study the sketches, instructions and the layout carefully before you begin the test.

Materials provided:

1. Pattern pieces
 - A. FRONT BODICE
 - B. BACK BODICE
 - C. FRONT SKIRT
 - D. BACK SKIRT
 - E. SLEEVE
 - F. CUFF
 - G. BACK NECK FACING
 - H. SLEEVE BINDING
2. Plain light weight cotton fabric 75cm long by 91cm wide.
3. Sewing thread to match the fabric.

THE TEST

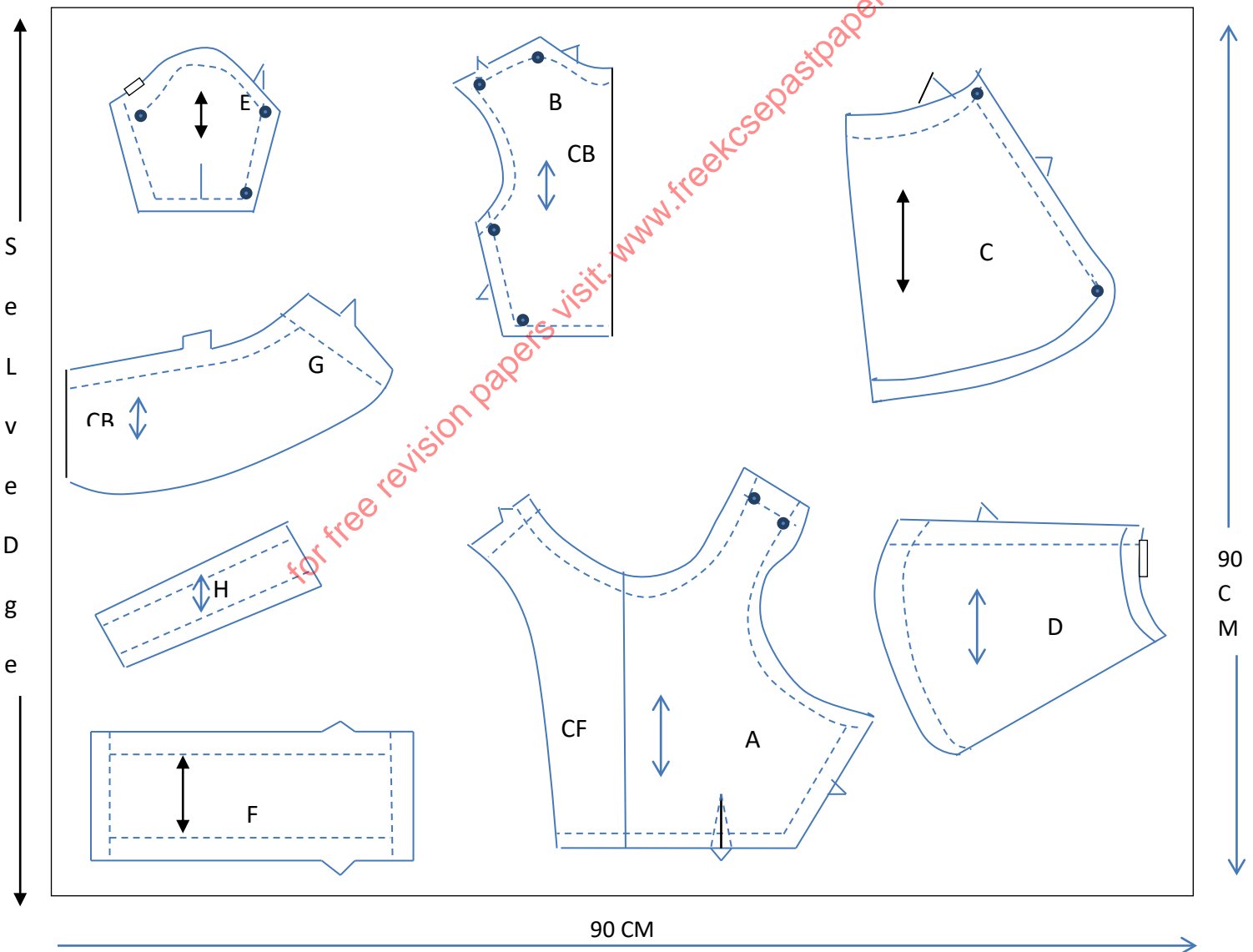
Using the materials provided, cut out and make the **RIGHT HALF** of the child's dress to show the following processes.

1. Presentation and cutting out. (16mks)
2. Making a single pointed dart on the front bodice. (5mks)
3. Joining the shoulder seam using double-stitched seam. (7mks)
4. Joining the front and back neck facings and neatening of the free edge of the joined facings. (8mks)
5. Using the joined facings to neaten the neckline. (4mks)
6. The joining of the front bodice to the front skirt and the back bodice to the back skirt using a plain seam and neaten the back part only. (10mks)
7. Making the side seam using an open seam. (5mks)
8. Making of the continuous wrap opening on the lower edge of the sleeve. (5mks)
9. Working the underarm seam using French seam. (6mks)
10. Preparation and attachment of the cuff on the lower edge of the sleeve. (6mks)
11. The preparation and attachment of the sleeve into the armhole. Do not **trim** and do not **neaten** the seam allowance. (8mks)
12. Working of the buttonhole using hand worked buttonhole stitches. (4mks)
13. Management of the fullness on the lower edge of the dress and hold the hem using even tacking. (6mks)

NB:

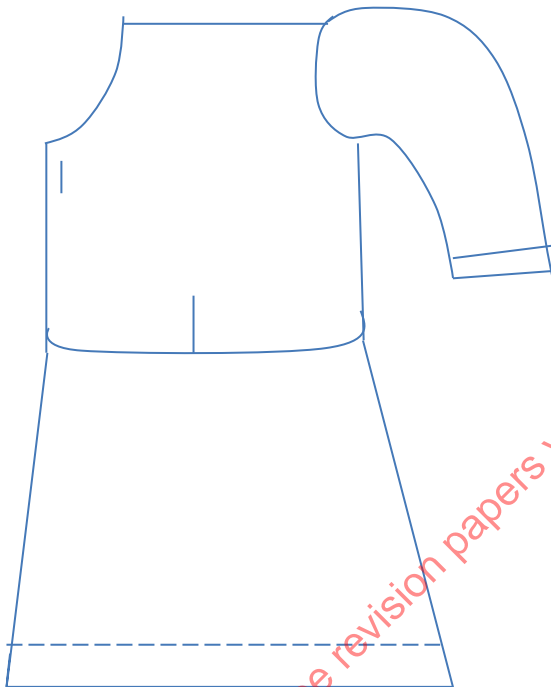
At the end of the examination, firmly sew on to your work, on a single fabric label bearing your name and admission number. Remove needles and pins from your work. Then fold your work carefully and place it in the envelope provided. Do not put scraps of fabric in the envelope.

THE LAYOUT (NOT DRAWN TO SCALE)

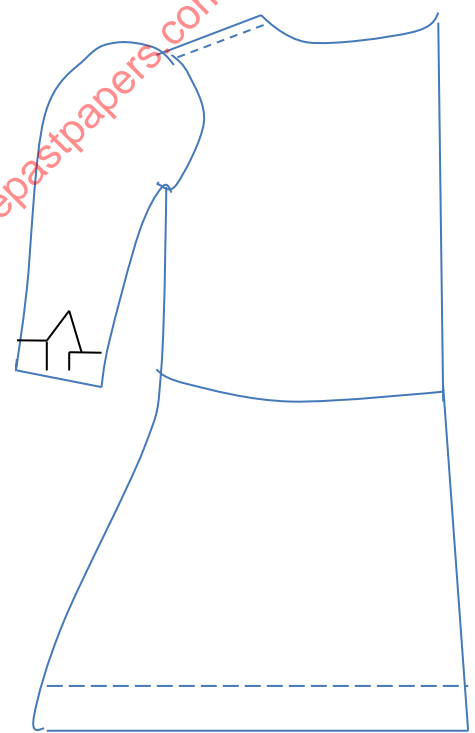


VIEW

FRONT VIEW



BACK VIEW



for free revision papers visit: www.freekcsepapers.com