

Name..... Index Number..... /

Candidate's Signature

Date

441/2

HOMESCIENCE

PAPER 2

(CLOTHING AND TEXTILE)

2017

TIME: 2HRS 30MIN

KIKUYU SUB-COUNTY JOINT EXAMINATION

HOMESCIENCE

PAPER 2

CLOTHING AND TEXTILES (PRACTICAL)

TIME: 2HRS 30MIN

for free past papers visit www.freekcsepastpapers.com

1. A pattern of a child's dress bodice is provided. You are advised to study the sketches, instructions and the layout before you begin the test.

MATERIALS PROVIDED

- A. Front bodice
- B. Back bodice
- C. Sleeve
- D. Collar
- E. Cuff
- F. Neck binding
- G. Sleeve opening strip

N.B Use pattern piece D to cut interfacing for collar.

2. Light weight plain cotton fabric 65cm long by 90cm wide.
3. Sewing cotton thread to match the fabric.
4. One button 1cm in diameter.

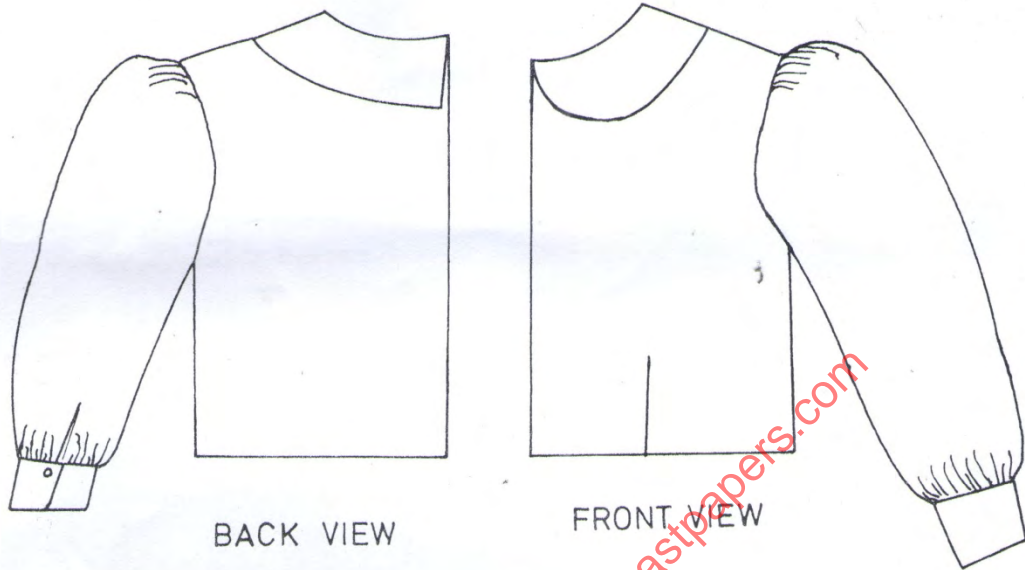
THE TEST

Using the material provided cut out and make the left half of a child's dress bodice to show the following:

- a) The working of the waist dart.
- b) The working of a machine fell seam at shoulder and French seams at the side and underarm seams.
- c) The preparation of an interfaced collar and attaching it to the bodice.
- d) The making of the continuous straight strip opening at the sleeve.
- e) The attaching of the sleeve cuff.
- f) The preparation and attaching of the sleeve to the bodice and leaving the seam untrimmed and unneatened.
- g) The making of the buttonhole.
- h) The attaching of the button.

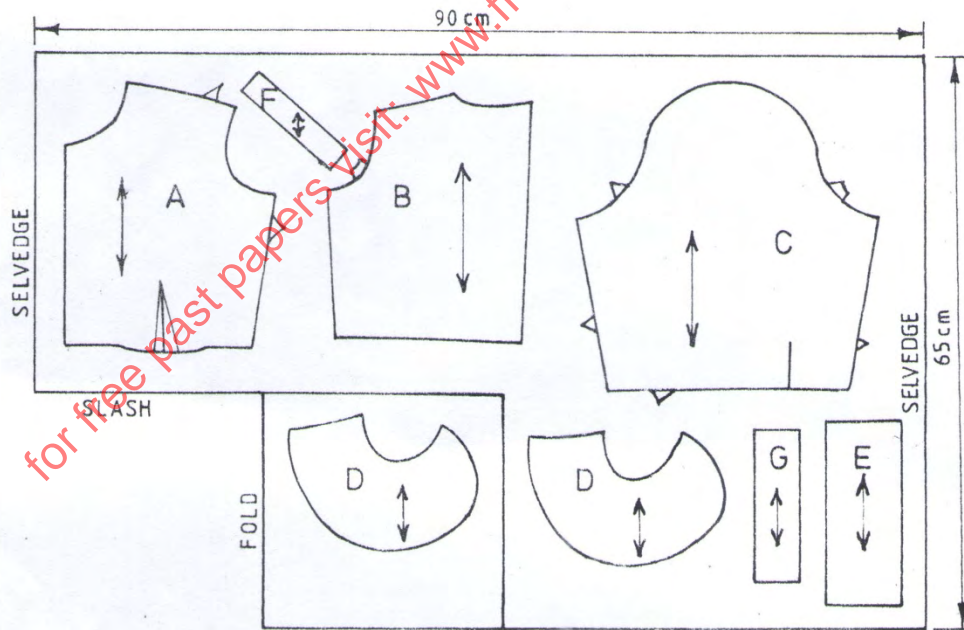
At the end of the examination, removal all pins and unnecessary temporary stitches from your work.

Sew on a label bearing your name and index number on a single fabric. Fold your work neatly and place it in the envelope provided. Do not put scraps of fabric in the envelope.



BACK VIEW

FRONT VIEW



THE LAYOUT
(NOT TO SCALE)

for free past papers visit: www.freekcsepastpapers.com