

FORM 3 GEOGRAPHY PAPER 1

SECTION A

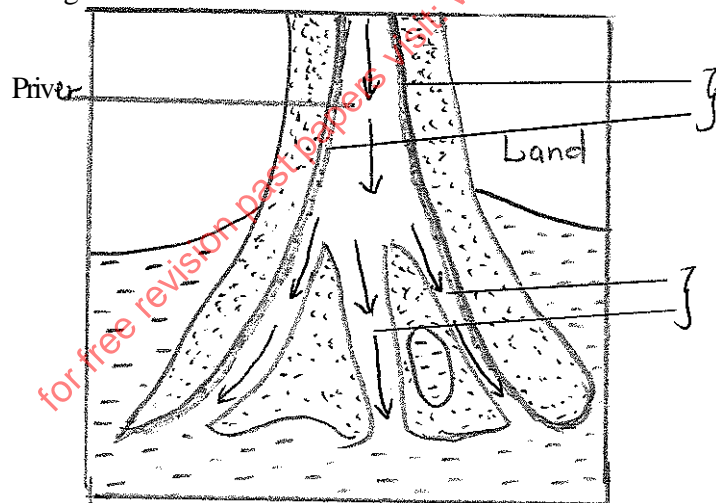
Answer all questions in this section

1. (a) Give three components of the solar system (3mks)
(b) Identify two types of high level clouds (2mks)

2. (a) What is a rock? (2mks)
(b) Give three characteristics of sedimentary rocks (3mks)

3. (a) Give three causes of earthquakes (3mks)
(b) Name two major earthquakes zones of the world (2mks)

4. (a) Give three characteristics of a river in its middle stage (3mks)
(b) The diagram below shows a Bird's foot delta use it to answer questions(b)



Identify the features marked H and J

5. a. What is weathering? (2mks)
b. Give three factors that influence the rate of weathering (3mks)

SECTION

N B Answer all the questions in this section

6. (a) (i) Apart from the Rift valley name three other relief features formed as result of faulting (3mks)
- (ii) With the aid of diagrams describe how the Great Rift Valley may have been formed by tensional forces (7mks)
- (b) Explain three ways in which faulting may influence drainage systems (6mks)
- (c) Describe four ways in which features resulting from faulting are of significance to the economy of Kenya (8mks)
7. (a) (1) Apart from alternate wetting and drying name three other processes of mechanical weathering (3mks)
- (ii) Describe the following process of weathering
- Alternate wetting and drying
 - Hydrolysis
 - Carbonation
- (b) (i) State three conditions that influence the process of solifluction in mass wasting (3m)
- (ii) Give three negative effects of mass wasting on the physical environment (3mks)
- (c) You are planning to carry out a field study on types of mass wasting
- (i) Identify three methods you would use to collect data (3mks)
- (ii) Give three types of rapid mass wasting that you are likely to observe during the field study (3mks)
- (iii) State two ways in which the information collected during the field study would be useful to the local community
8. (a) (i) Outline two factors that influence the development of drainage patterns

(ii) Outline five characteristics of a river in its youthful stage

(b) Describe the following processes of river erosion

(i) Attrition

(ii) Corrasion

(c) Explain three negative effects of rivers to the human environment (6mks)

(d) Your class is planning to carry out a field study of a river in its old stage

(i) State three reasons why it would be necessary to pre-visit the area of study

(3mks)

(ii)

S

State three activities you would carry out to determine why deposition occurs at this stage

(3mks)

for free revision past papers visit: www.freekcsepastpapers.com