

441/2

HOME SCIENCE

(CLOTHING CONSTRUCTION)

Paper 2

(PRACTICAL)

2015

2½ hours

MAKUENI COUNTY KCSE 2015 PREPARATORY EXAMINATION

Kenya Certificate of Secondary Education

HOME SCIENCE

(CLOTHING CONSTRUCTION)

Paper 2

(PRACTICAL)

2½ hours

Instructions to candidates

- (a) This paper consists of 4 printed pages.*
- (b) Candidates should check the question paper to ascertain that all the pages are printed as indicated and that no questions are missing.*
- (c) Candidates MUST use machine stitches appropriately in the construction of the garment. Hand stitches used instead of machine stitches will not be marked.*
- (d) Hand stitches will only be allowed for the making of loop, worked buttonhole and tacking stitches.*

Sponsored by H.E. Prof. Kivutha Kibwana, Governor, Makueni County.

TURN OVER

A pattern of a child's dress is provided. You are advised to study the sketches, instructions and the layout carefully before you begin the test.

Materials provided

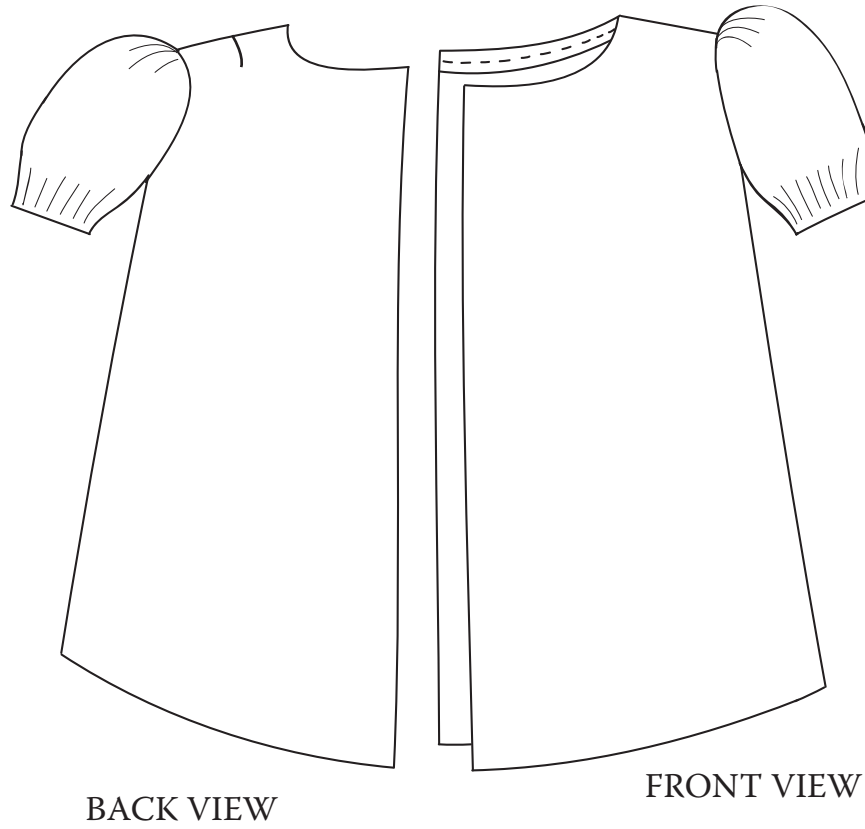
1. Pattern pieces for the dress
 - A. Dress front
 - B. Dress back
 - C. Sleeve
 - D. Front facing
 - E. Back facing
2. Plain light weight cotton fabric 55 cm long by 90 cm wide
3. Sewing thread to match the fabric
4. Elastic 15 cm long and 1 cm wide
5. Bodkin needle/safety pin
6. One large envelope

THE TEST

Using the materials provided, cut out and make the left half of a child's dress to show the following:

- (a) The working of a shoulder dart
- (b) The joining of the shoulder seam using machine fell seam work on Right side
- (c) The joining of the side seam using open seam
- (d) The joining of the front and the back facings at the shoulder and neatening the outer edge of the facing
- (e) The attaching of the facing at the neckline of the dress
- (f) The joining of the sleeve seam using a French seam
- (g) The making of a casing at the hem of the sleeve leaving an insertion gap of 1.5 cm, a centimetre away from the sleeve hem
- (h) The working of gathers at the crown of the sleeve
- (i) The attaching of the sleeve
- (j) The neatening of half of the armhole seam
- (k) The inserting of the elastic without closing the insertion gap

At the end of the examination, firmly sew onto your work, on a single piece of fabric, a label bearing your Name and Index Number. Remove the needle and pins from your work. Then fold your work neatly and place it in the envelope provided. Do not put scraps of fabric in the envelope.

DRESSTHE LAYOUT (Not drawn to scale)