

Name.....

Index No...../.....

School.....

Date

Candidate's Signature.....

231/2

BIOLOGY

(THEORY)

Paper 2

JULY / AUGUST 2012

Time: 2 Hours

BUTULA DISTRICT FORM FOUR JOINT MID YEAR EXAMINATIONS - 2012

Kenya Certificate of Secondary Education (K.C.S.E)

231/2

BIOLOGY

(THEORY)

Paper 2

JULY / AUGUST 2012

Time: 2 Hours

INSTRUCTIONS TO CANDIDATES

- This paper consists of two sections A and B.
- Answer ALL questions in section A
- Answer question 6 (compulsory) and either question 7 or 8 in section B.

For Examiner's Use Only

<i>Section</i>	<i>Question</i>	<i>Maximum score</i>	<i>Candidate's score</i>
A	1	8	
	2	8	
	3	8	
	4	8	
	5	8	
B	6	20	
	7	20	
	8	20	
Total Marks		80	

This paper consists of 8 printed pages.

Candidates should check the question paper to ensure that all pages are printed as indicated and no questions are missing

SECTION A (40 MARKS)

Answer all questions in this section.

1. During an ecological study, students collected and marked 120 ants and released them. After 48 hours, the students captured another 90 ants, 20 of which had been marked previously.

(a) How many ants were there in the compound? Show your working. (3mks)

.....

.....

.....

.....

.....

.....

.....

.....

.....

.....

.....

.....

(b) What are the limitations of this method in sampling animal populations. (4mks)

.....

.....

.....

.....

.....

.....

.....

.....

.....

.....

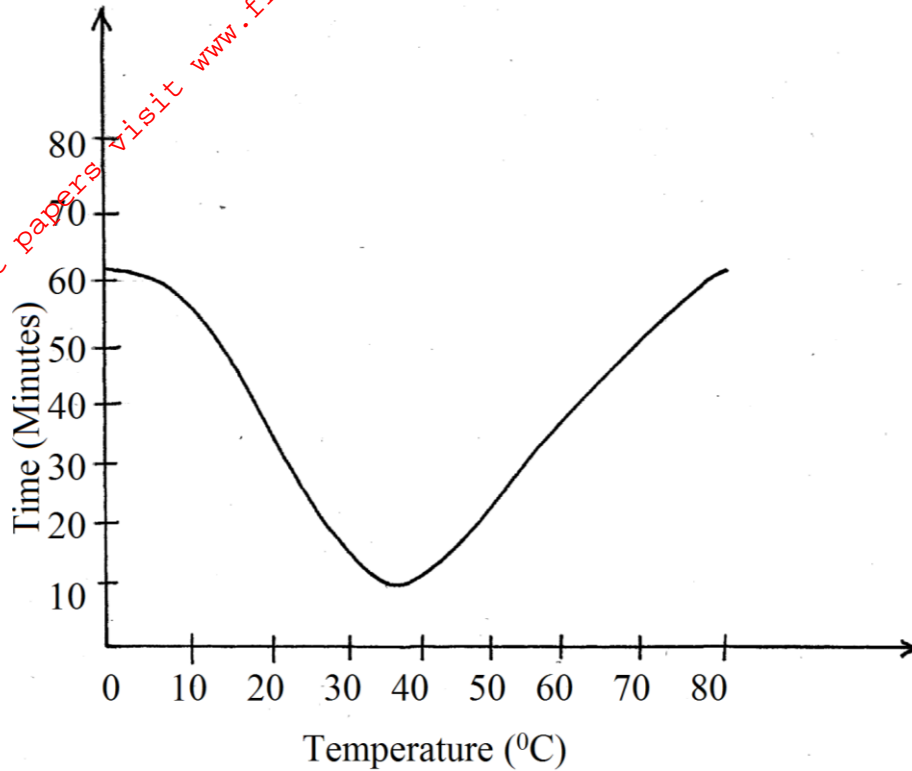
.....

(c) State two other methods which could be used to determine the population. (1mk)

.....

.....

2. In an experiment to investigate the action of pepsin on egg albumen, equal amount of paper were added to equal amount of egg albumen in different test –tubes. The test-tubes were placed in water bath at different temperature. The graph below shows the time taken for the enzymes to digest protein at each temperature.



(a) What is the optimum temperature for enzymes? (1mk)

.....

(b) Account for the time taken to digest egg albumen at 60°C. (2mks)

.....

(c) With reasons name the form in which the enzyme pepsin is secreted. (2mks)

.....

(d) State three other factors that affect enzyme controlled reactions. (3mks)

.....

(d) Briefly describe the effects of the following plant growth hormones

(i) Gibberellins

(2mks)

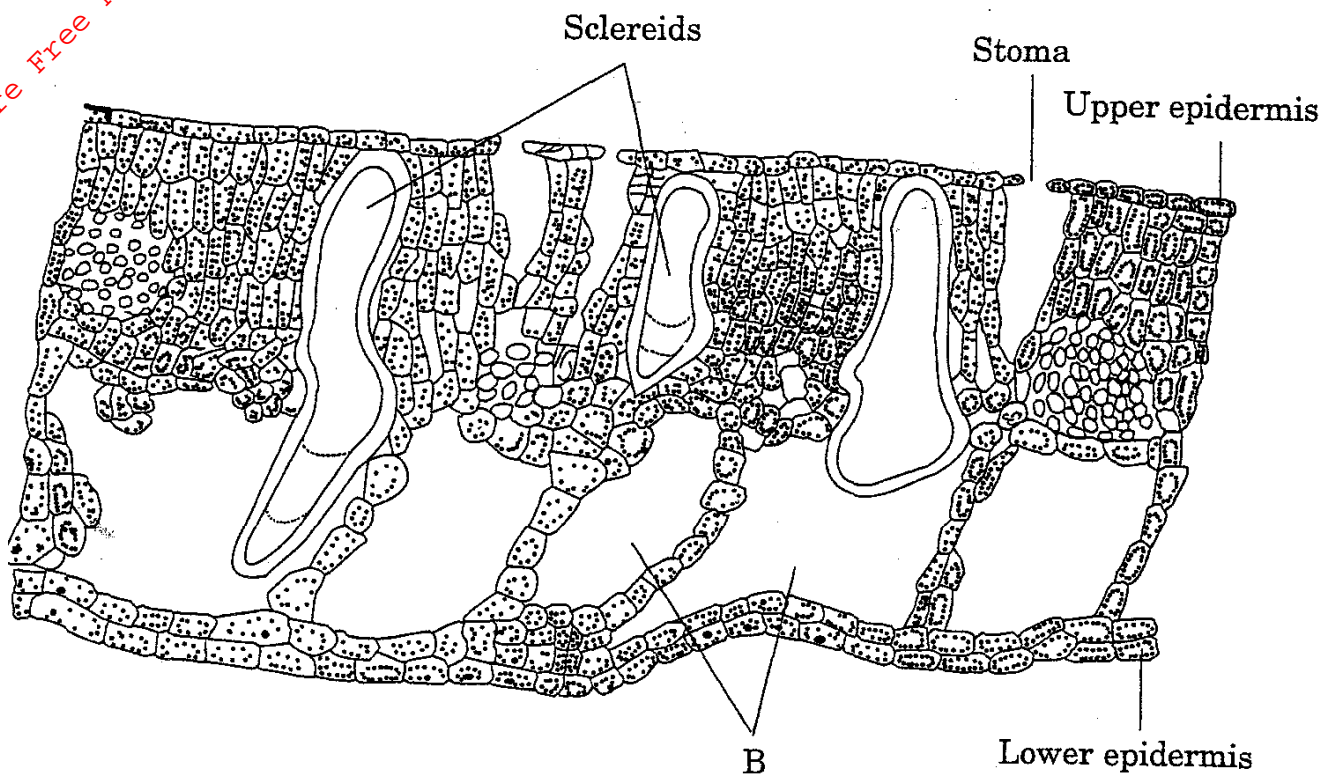
.....
.....
.....

(ii) Abscisic Acid

(3mks)

.....
.....
.....

5. The diagram below represents a transverse section of a leaf.



(a) (i) State the habitat of the plant from which the leaf was obtained.

(1mks)

.....
.....

(ii) Give two reasons for your answer in (a) (i) above.

(2mks)

.....
.....

(b) How does the part labelled B adapt the plant to its habitat

(1mk)

.....
.....

(c) Smokers are always at a high risk of suffering from respiratory infections.

Explain

(3mks)

.....
.....
.....
.....

(d) What structures are used for gaseous exchange in plants found in marine water? (1mk)

.....
.....

For More Free KCSE past papers visit www.freekcsepastpapers.com

SECTION B (40 MARKS)

Answer question 6 (compulsory) in the spaces provided and either question 7 or 8 in the spaces provided after question 8.

6. Carbohydrates used during respiration and those formed during photosynthesis by a certain plant was measured over a period of 24 hours at an interval of 3 hours

Time of day	12AM	3AM	6AM	9AM	12PM	3PM	6PM	9PM	11PM
Carbohydrates formed during photosynthesis (mg)	0	0	5	30	60	30	5	0	0
Carbohydrates used during respiration (mg)	10	10	10	10	10	10	10	10	10

Using the same axes,

- (a) Plot a graph of carbohydrate formed during photosynthesis and carbohydrate used during respiration against time. (7mks)

(b) Calculate the net carbohydrate formed by the plant. (2mks)

.....

.....

.....

(c) At what time of the day do the light compensation points occur? (2mks)

.....

.....

(d) Account for the shape of graph on carbohydrates.

(i) Between 12.00a.m and 3a.m. (2mks)

.....

.....

(ii) Between 3.00a.m to 12.00 noon. (2mks)

.....

.....

(e) How could foggy weather influence the net amount of carbohydrates formed over the 24 hour period? (1mk)

.....

(f) Give other external factors apart from temperature and light intensity that influence the rate of photosynthesis. (2mks)

.....

.....

(g) In which form are carbohydrates stored in

(i) Plant bodies. (1mks)

.....

(ii) Fungi (1mk)

.....

7. (a) Define natural selection. (2mks)

(b) Natural selection brings about adaptation of a species to the environment.

Discuss. (18mks)

8. Discuss the adaptations of seeds and fruits to dispersal. (20mks)

.....

.....

For More Free KCSE past papers visit www.freekcsepapers.com

A series of horizontal dotted lines for writing.

For More Free KCSE past papers visit www.freekcsepastpapers.com

A series of horizontal dotted lines for writing.

For More Free KCSE past papers visit www.freekcsepapers.com

Dotted lines for writing.

