

441/2

HOMESCIENCE

CLOTHING CONSTRUCTION

PAPER 2

PRACTICAL

JULY/AUGUST - 2014

TIME: 2 ½ HOURS

MERU COUNTY JOINT EVALUATION EXAM - 2014

Kenya Certificate of Secondary Examination K.C.S.E

441/2

HOMESCIENCE

CLOTHING CONSTRUCTION

PAPER 2

PRACTICAL

JULY/AUGUST - 2014

TIME: 2 ½ HOURS

INSTRUCTIONS TO CANDIDATES

- a) This paper consists of 4 printed pages.
- b) Candidates must check the question paper to ascertain that all pages are printed as indicated and that no questions are missing.

1. **MATERIALS PROVIDES**

- A Front bodice
- B Back bodice
- C Sleeve
- D Collar
- E Cuff
- F Neck binding
- G Sleeve opening strip

- 2. Use pattern piece D to cut interfacing for collar
- 3. Light weight plain cotton fabric 65cm long 90cm wide
- 4. Sewing cotton thread to match the fabric
- 5. One button 1cm in diameter.

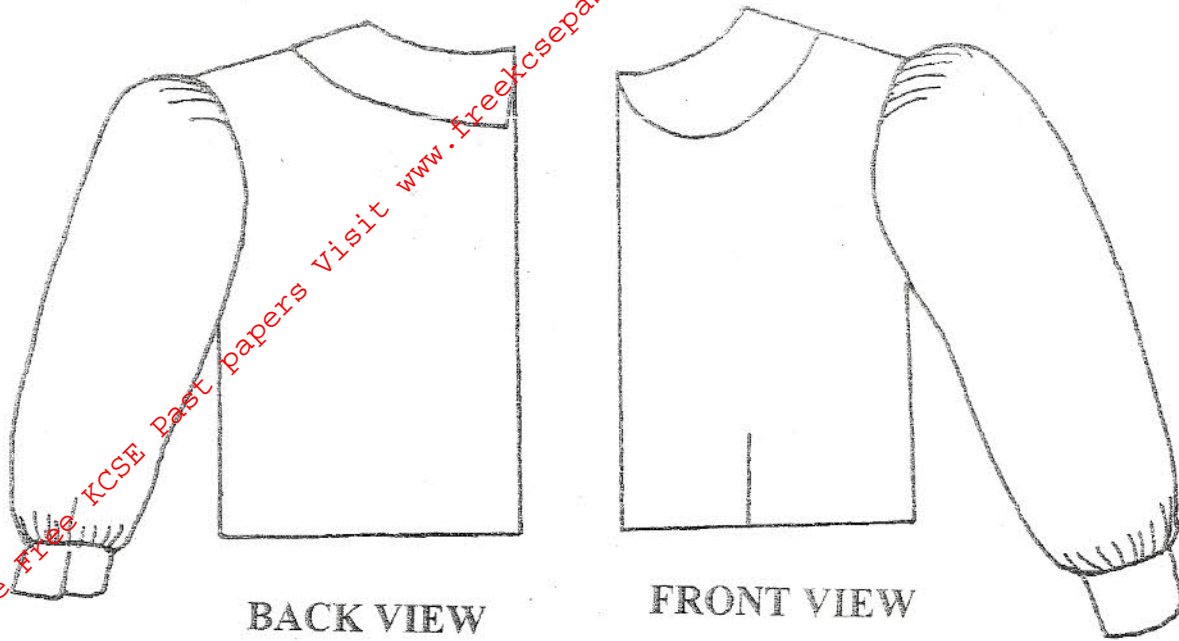
THE TEST

Using the material provided cut out and make the left half of a child's dress bodice to show the following:

- 1. The working of the waist dart
- 2. The working of a machine fell seam at shoulder and French seams at the side and underarm seams.
- 3. The preparations of an interfaced collar and attaching it to the bodice.
- 4. The making of the continuous straight strip opening at the sleeve
- 5. The attaching of the sleeve cuff
- 6. The preparation and attaching of the sleeve to the bodice and leaving the seam untrimmed and unneated
- 7. The making of the buttonhole
- 8. The attaching of the button

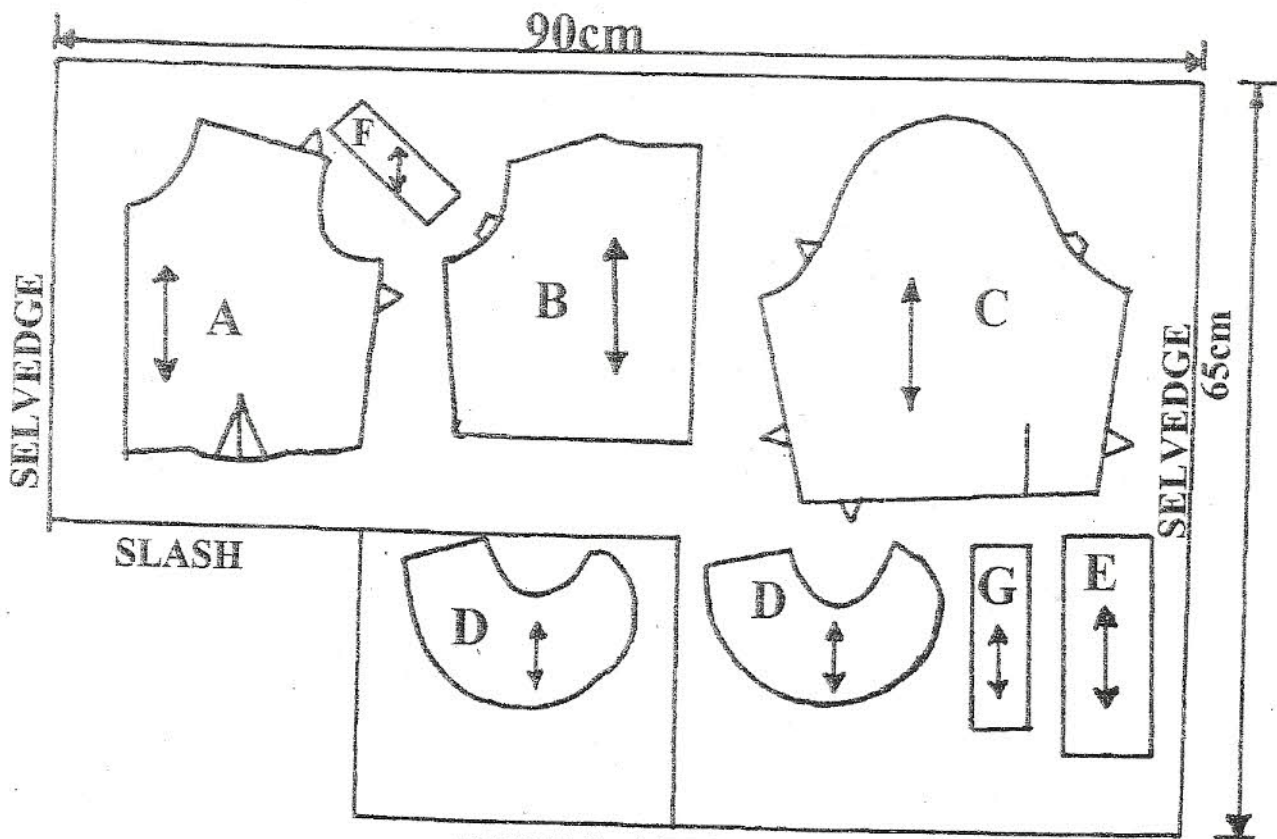
At the end of the examination, remove all pins and unnecessary stitches from your work. Sew on label bearing your name and index number on a single fabric. Fold your work neatly and place it in the envelope provided. Do not put scraps of fabric in the envelope.

For More Free KCSE Past papers Visit www.freekcsepastpapers.com



BACK VIEW

FRONT VIEW



THE LAYOUT
(NOT TO SCALE)