

Name

School

Index No.

Candidates Sign:

Date:

441/2

HOME SCIENCE

Paper 2

PRACTICAL –

July / August – 2014

Time: 2 ½ Hours

MMS JOINT EXAMINATIONS

Kenya Certificate of Secondary Education (K.C.S.E)

441/2

HOME SCIENCE

Paper 2

PRACTICAL

July / August – 2014

Time: 2 ½ Hours

*This paper consists of 3 printed pages.
Candidates should check the question paper to ensure that all the
Pages are printed as indicated and no questions are missing.*

A pattern of a blouse bodice is provided. You are advised to study the question paper, the sketches and the layout before you begin the test

MATERIALS PROVIDED

1. Pattern pieces for the dress
 - A Front bodice
 - B Back bodice low part
 - C Sleeve
 - D Tie collar
 - E Yoke
 - F Sleeve facing
2. Plain light weight cotton fabric 67cm by 91cm wide.
3. Sewing thread to match the fabric.

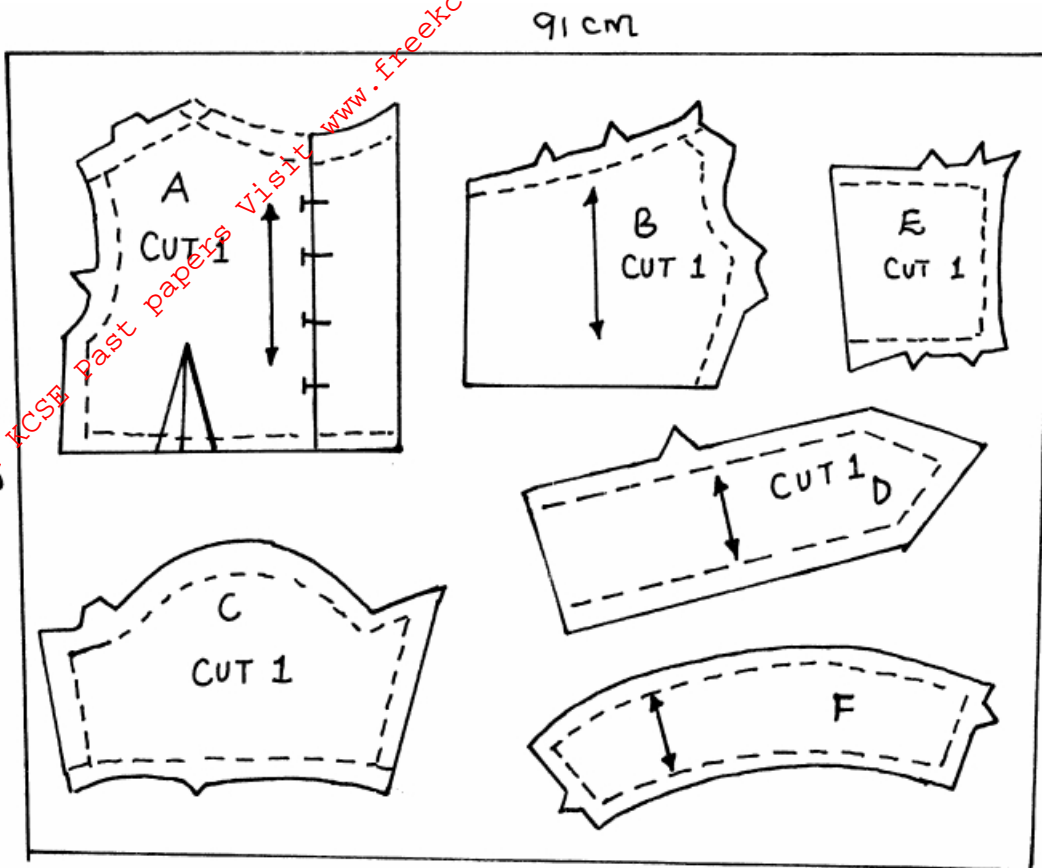
THE TEST

Using the materials provided, cut out and make up the RIGHT HALF of the blouse bodice to show the following;

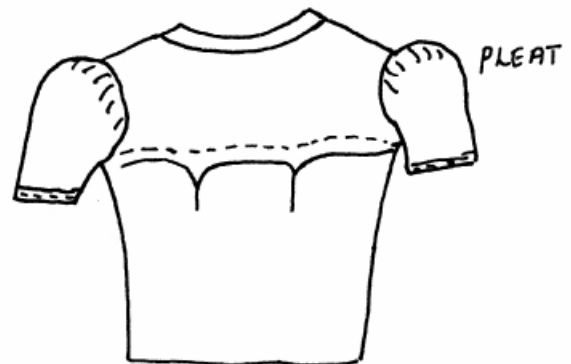
- a) The attaching of the back yoke bodice using an overlaid seam/lapped seam without neatening it.
- b) The working of the waist dart.
- c) The neatening of the raw edge of front facing.
- d) The joining of the shoulder seam using a neatened open seam.
- e) The attaching of the collar including the preparation of the ties collar extension.
- f) The joining of the side seam using French seam.
- g) The preparation of the sleeve using a French seam for the under arm seam.
- h) The preparation and attaching of sleeve facing to the right of the garment.
- i) The fixing of the free edge of the facing to the sleeve.
- j) The attaching of the sleeve to the bodice and neatening half of the armhole seam.
- k) The working of the top button hole only.

At the end of the examination, firmly sew on your work on a single fabric, a label having your name and index number. Remove the needles and pins from your work. Then fold your work carefully and place it in the envelope provided. Don't put scraps of materials in the envelope.

THE LAYOUT NOT DRAWN TO SCALE



FRONT VIEW



BACK VIEW

END