

441/2
(CLOTHING CONSTRUCTION)
PAPER 2
(PRACTICAL)
JULY/AUGUST 2016
TIME: 2½ HOURS

KIRINYAGA CENTRAL SUB-COUNTY EFFECTIVE FORTY
JOINT EXAMINATION – 2016

Kenya Certificate of Secondary Education
CLOTHING CONSTRUCTION
PAPER 2
(PRACTICAL)
TIME: 2½ HOURS

A pattern of a blouse is provided.

You are advised to study the sketches, instructions and the layout carefully before you begin the test.

MATERIAL PROVIDED.

1. Pattern pieces.
A – Front bodice.
B – Back bodice
C – Sleeve
D – Pocket
E – Collar
2. Light weight fabric 62cm long and 114cm (45”) wide.
3. Sewing thread to match the fabric.
4. One large envelope.

THE TEST.

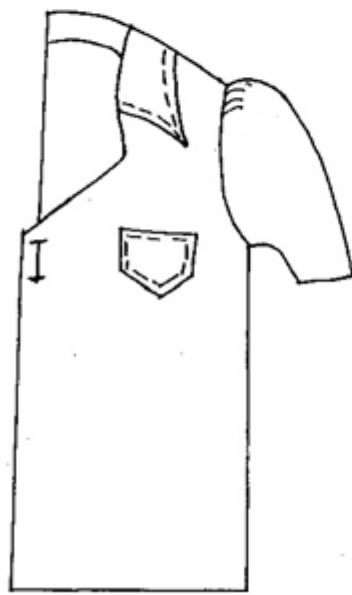
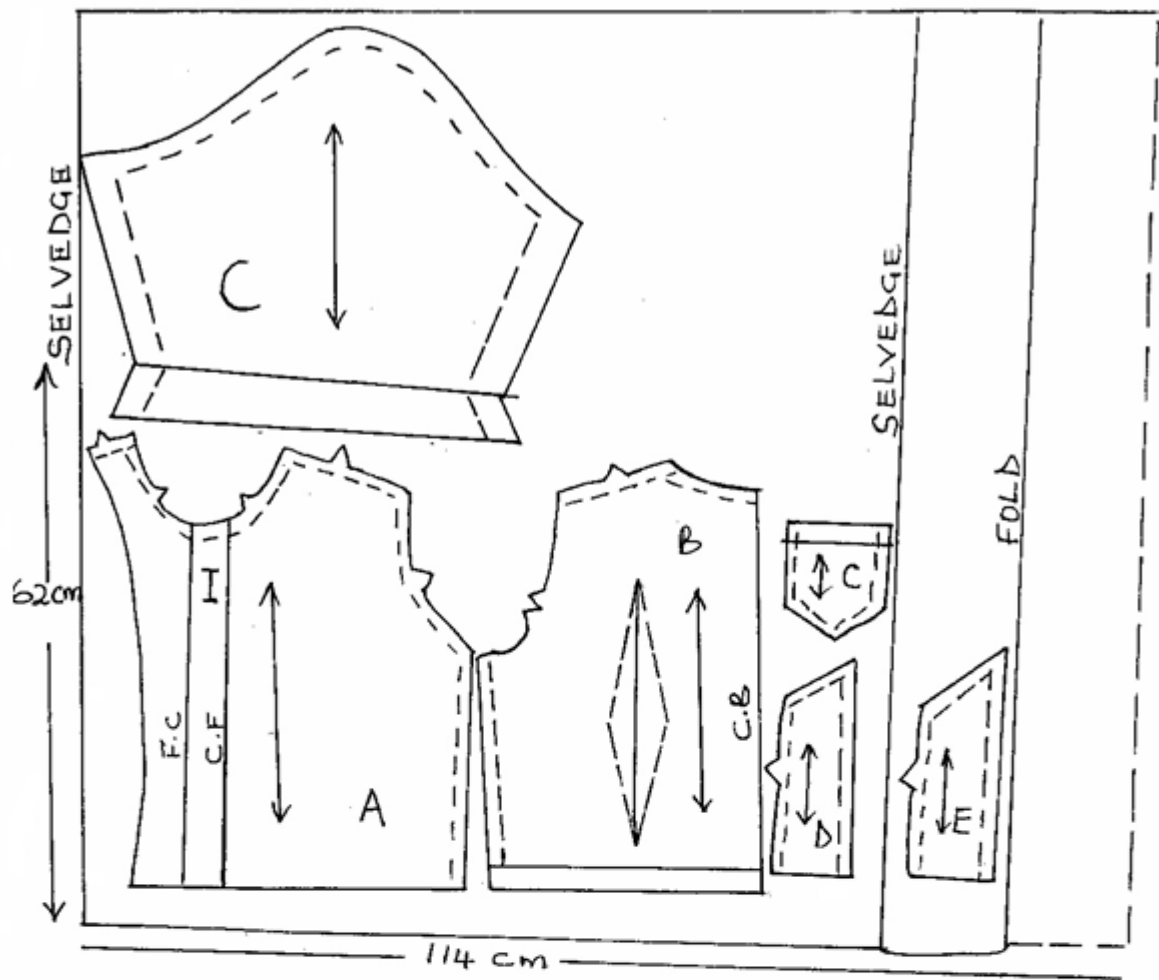
Using material provided cut out and make up the LEFT HALF of the shirt to show the following processes:

- | | |
|---|------------|
| (a) Cutting out. | (9 marks) |
| (b) Making double dart at the back bodice. | (7 marks) |
| (c) Making of double stitched seam at the shoulder. | (9 marks) |
| (d) Making of side seam using open seam. | (9 marks) |
| (e) Neatening free edge of the facing. | (4 marks) |
| (f) Preparation of the interfaced collar. | (7 marks) |
| (g) Attaching the collar to the blouse. | (7 marks) |
| (h) Preparation and attaching of patch pocket. | (8 marks) |
| (i) Preparation of the sleeve and joining of under-arm seam using unneaten plain seam. | (7 marks) |
| (j) Attaching the sleeve to the blouse do not neaten. | (8 marks) |
| (k) Making a hem on the lower part of the sleeve using slip-hemming (make half the front part of the hem only). | (5 marks) |
| (l) Overall presentation. | (10 marks) |

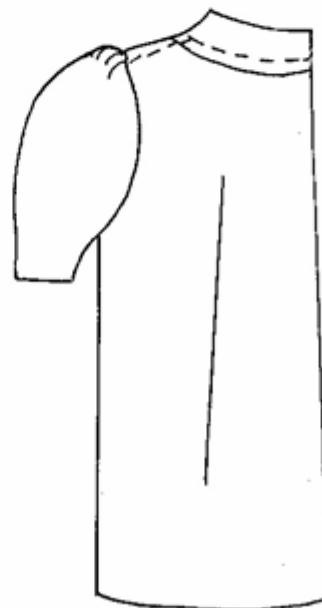
At the end of the examination, firmly sew onto your work on a single fabric a label bearing your Name and Index Number. Remove the needle and pins and from your work., then fold your work neatly and place it in the envelope provided.

DO NOT put scraps of fabric in the envelope.

LAYOUT (NOT DRAWN TO SCALE)



FRONT VIEW



BACK VIEW