

Name Index No.

School Candidate's Signature

511/3

Date

MUSIC

Paper 3

July/August 2016

Time: 2½ Hours

WESTLANDS SUB-COUNTY JOINT EXAMINATION

Kenya Certificate of Secondary Education

MUSIC

Paper 3

July/August 2016

Time: 2½ Hours

INSTRUCTIONS TO CANDIDATES

- * Write your name and index number in the spaces provided above.
- * Sign and write the date of the examination.
- * Answer all questions in this paper.
- * All question in section A are **compulsory**.
- * In question 4, choose any two of the questions numbered (a), (b), (c) and (d)
- * Candidates must answer the questions in English.

SECTION A : BASIC SKILLS (30 MARKS)

1. a) Continue the following opening to make a melody of sixteen bars for voice introducing a sequence and a triplet. Modulate to the subdominant and back to the tonic. Add phrase marks. (8 marks)



- b) Using staff notation set the following text to music** (7 marks)

Tutavua mapambo yote mbele zake

- 2.**

Harmonise the following melody for Soprano, Alto, Tenor and Bass (SATB). Choose appropriate chords from the following I, II, IV, V, VI. Use a passing six four chord. (15 marks)

**SECTION B : HISTORY AND ANALYSIS (55 MARKS)**

3. AFRICAN MUSIC

- a) Identify the communities that perform the following dances. (4 marks)
- i) Mwomboko
 - ii) Dodo
 - iii) Ngoma
 - iv) Entabanana
- b) Give the genres of music that the following African composers are associated with.
- i) Mary Atieno (1 mark)
 - ii) Daudi Kabaka (1 mark)
- c) Name the main source of sound production in each of the following classes of instruments.
- i) Chordophones (1 mark)
 - ii) Aerophones (1 mark)
 - iii) Membranophones (1 mark)
- d) Outline three characteristic features of melodies in African traditional performances. (3 marks)
-
-
-
-
- e) Give two examples of popular music that was performed in Kenya between 1960s and 1980s. (2 marks)
-
-

4. WESTERN MUSIC

Choose any two from (a), (b), (c) and (d)

a) THOMAS TALLIS

- i) State the medium of composition that Thomas Tallis used most. (1 mark)
-
- ii) Outline three factors influencing Thomas Tallis as a composer. (3 marks)
-
-
-
- iii) State two features of Spem in Alium (2 marks)
-
-
- iv) Other than Spem in Alium name any other work that Thomas Tallis is famous for. (1 mark)

.....

b) WOLFGANG AMADEUS MOZART

i) Name the period of music history in which Mozart belong. (1 mark)

.....

ii) State three characteristics of style galant. (3 marks)

.....

.....

.....

iii) Name the types of works that have the following titles. (2 marks)

a) Marriage of Figaro (½ mark)

b) Jupiter (½ mark)

c) A musical joke (½ mark)

d) Haffner (½ mark)

iv) Define the term requiem mass. (1 mark)

.....

.....

c) ROBERT SCHUMANN

i) What was Robert Schumann's nationality. (1 mark)

.....

ii) Outline three styles of composition that Robert Schumann used. (3 marks)

.....

.....

.....

iii) Define the following terms : (3 marks)

a) Etude

.....

.....

b) Toccata

.....

.....

c) Song cycle

.....

.....

d) AARON COPLAND

i) What type of work is Appalachian spring. (1 mark)

.....

ii) State three characteristic features of the 20th century music that are evident in Copland's musical works. (3 marks)

.....

.....

.....

iii) In what ways did Aaron Copland share his musical experience with others. (2 marks)

.....

.....

.....

.....

iv) Name one work where Copland used the 12 tone technique. (1 mark)

.....

5. PRESCRIBED AFRICAN MUSIC
Ibodi Dance by Busia Municipla Cultural Troupe. PPMC recording

a) State two styles of performance that are prominent in the recording. (2 marks)

.....

.....

b) Describe how the recording begins. (2 marks)

.....

.....

.....

.....

c) Outline the relationship between instruments and the voice in the recording. (4 marks)

.....

.....

.....

.....

.....
.....
d) Describe the final section of this recording. (2 marks)

.....
.....
.....
.....

6. PRESCRIBED WESTERN MUSIC

Rondo Alla Turca Movement 3 from sonata No.11 K331 By Wolfgang Amadeus Mozart

a) For what medium is the music scored ? (1 mark)

b) Give the bar numbers where the following compositional devices have been used.

i) Scalic motion (½ mark)

ii) Inversion (½ mark)

iii) Sequence (½ mark)

iv) Alberti bass (½ mark)

c) Name the keys to which the piece modulates in the following bars

i) Bar 5 (½ mark)

ii) 9 - 12 (½ mark)

iii) 25-32 (½ mark)

iv) Bar 38 (½ mark)

d) With the use of bar numbers, name any two ornaments that have been used in the piece. (2 marks)

.....
.....

e) Explain the following terms as used in Rondo Alla Turca

i) ten. (1 mark)

.....
ii) fz. (1 mark)

f) Describe the cadence at bar 95-96. (1 mark)

.....
.....

7. UNPREPARED ANALYSIS

Study the music below and answer the questions that follow. (Music by anonymous)

a) Identify the key signature of this melody. (1 mark)

.....

b) With reference to bar numbers, identify the key to which the music modulates. (1 mark)

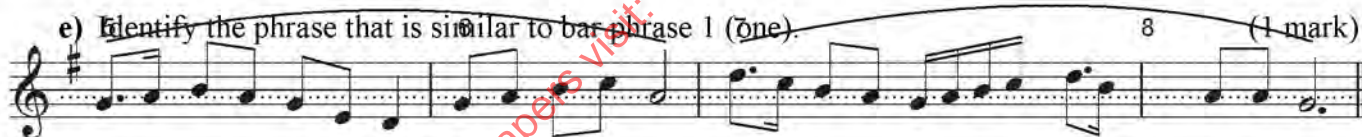
.....

c) Identify the bars with conjunct motion. (1 mark)

.....

.....

d) Describe the range of this piece. (1 mark)



f) Describe the cadence at the end of bar number four (4). (1 mark)

.....

.....

SECTION C : GENERAL MUSIC KNOWLEDGE (15 MARKS)

8. a) Give three reasons why it is important for a music student to participate in the Kenya music festivals. (3 marks)

.....

.....

.....

b) State three advantages of using solfa notation. (3 marks)

.....

.....
.....
.....
c) Explain the following terms :

i) Choreographer

(1 mark)

.....
.....
.....
ii) Promoter

(1 mark)

.....
.....
.....
iii) Adjudicator

(1 mark)

.....
.....
.....
iv) Session musician

(1 mark)

.....
.....
.....
d) State the difference between solo concerto and concerto grosso.

(2 marks)

.....
.....
.....
e) What is the role of a soloist in an African traditional folksong.

(4 marks)

for free past papers visit: www.freekcsepastpapers.com

for free past papers visit: www.freekcsepastpapers.com