

441/2

HOMESCIENCE

Paper 2 (PRACTICAL)

(CLOTHING CONSTRUCTION)

July/August 2016

Time 2 hours 30 minutes

NTIMA, NYAKI AND MUNICIPALITY CLUSTER EVALUATION 2016

HOMESCIENCE

Paper - 441/2

CLOTHING CONSTRUCTION

July/August 2016

Time: 2 hours 30 minutes

INSTRUCTIONS TO CANDIDATE

1. This paper consists of 3 printed pages
2. Candidates should check the question paper to ensure that all the printed pages are printed as indicated and no questions are missing.

A pattern of a child's dress is provided. You are advised to study the sketches, instruction and the layout carefully before you begin the test.

MATERIALS PROVIDED

1. Pattern Pieces
 - A- Dress Back
 - B- Dress Front
 - C-Front yoke
 - D- Sleeve
 - E- Sleeve binding
 - F- Back facing
 - G - Front facing
2. Plain light weight cotton fabric 65 cm long by 90 cm wide.
3. Sewing thread to match the fabric.
4. One large envelope.

THE TEST

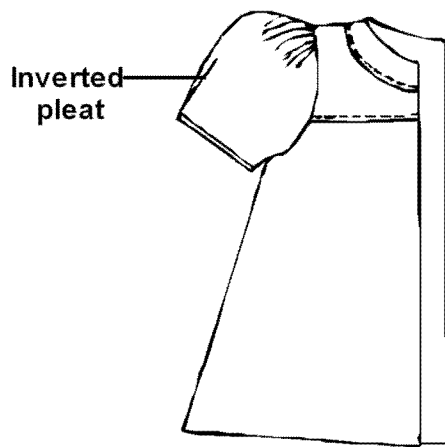
Using the material provided, cut out and make the RIGHT HALF of a child's dress to show the following processes

- | | |
|--|------------|
| a) Cutting out | (18 ½ mks) |
| b) Attaching the front yoke to the dress front using an overlaid seam. Neaten half of the seam using loop stitches | (8 ½ mks) |
| c) Joining of the shoulder seam using an open seam (do not neaten) | (4 mks) |
| d) Joining of the side seam using a French seam | (8 mks) |
| e) Preparing of sleeve | |
| i) Making an inverted pleat | (7 mks) |
| ii) Joining the underarm seam using French seam | (5 mks) |
| iii) Attaching the binding and holding it using slip hemming (slip hem half the binding) | (4 mks) |
| e) Attaching of sleeve onto the garment (do not trim or neaten) | (8 mks) |
| f) Attaching the facing on the neckline | (20 ½ mks) |
| g) Overall presentation. | (6½ marks) |

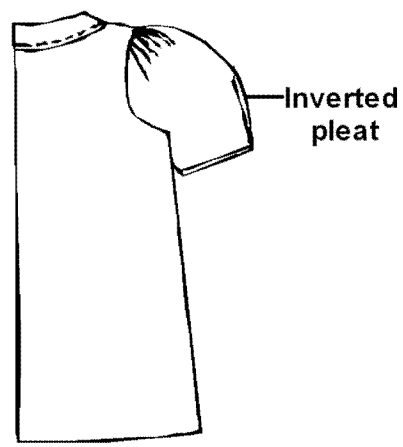
At the end of the examination, firmly sew on your work on a single fabric, a label bearing your name and index number.

Remove needles and pins from your work then fold your work neatly and place it in the envelope provided.

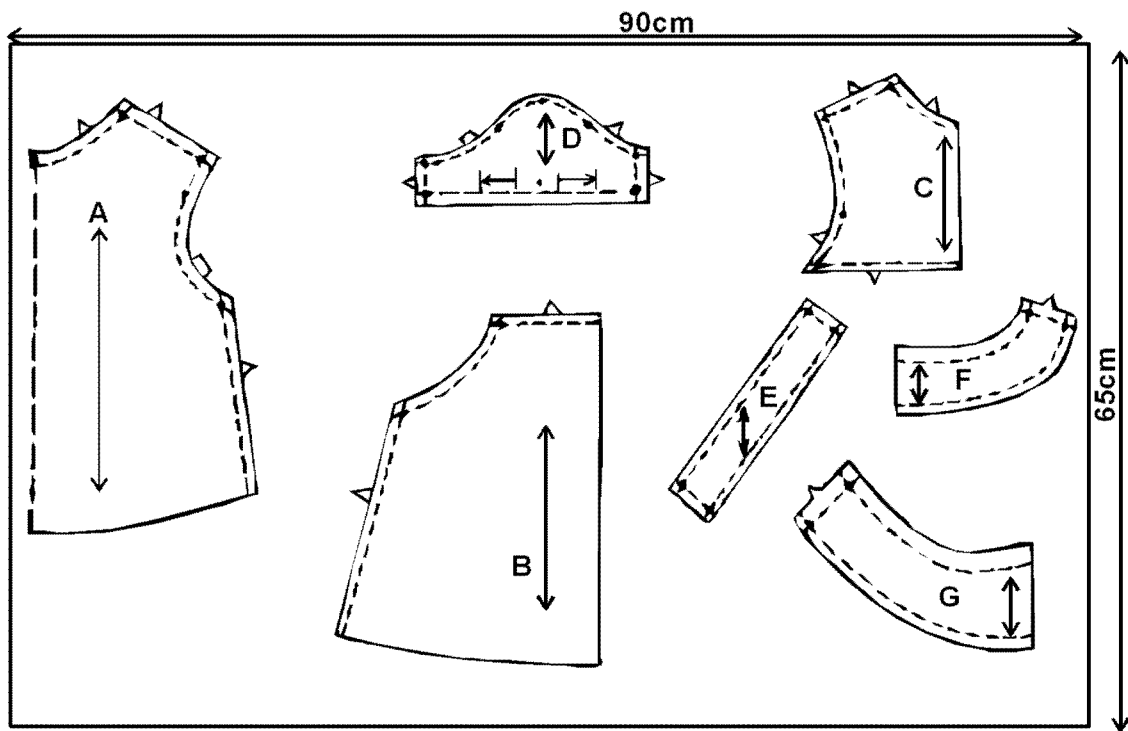
Do not put scraps of fabric in the envelope.



FRONT VIEW



BACKVIEW



THE LAYOUT NOT TO SCALE

