

Name: ..... Index no .....

School: ..... Candidate's sign .....

Date: ..... Class.....

443/2

AGRICULTURE

PAPER 2

MARCH/APRIL 2017

TIME: 2 HOURS

## MOI HIGH SCHOOL-KABARAK END TERM EVALUATION EXAMINATION

*Kenya Certificate of Secondary Education (K.C.S.E.)*

**Agriculture**

**Paper 2**

### **INSTRUCTIONS TO CANDIDATES:**

- Write your **name, index number, school and admission number** in the spaces provided.
- Sign and write the date in the spaces provided above.
- Answer **all** the questions in section **A** and **B**
- Answer any **two** questions in section **C**.
- Answers should be written in the spaces provided in this booklet.
- 

### **For Examiner's Use Only:**

SECTION	QUESTIONS	MAXIMUM SCORE	CANDIDATE'S SCORE
A	1-18	30	
B	19-22	20	
C		20	
		20	
	<b>TOTAL</b>	<b>90</b>	

*This paper consists of 13 printed pages. Candidates should check to ascertain that all pages are printed as indicated and that no questions are missing.*

**SECTION A (30 Marks)**  
***Answer all questions in the spaces provided***

- 1 Name four common breeds of dairy goats. (2marks)

.....

.....

.....

.....

- 2 Give four conditions that may reduce the quality of eggs for hatching. (2marks)

.....

.....

.....

.....

- 3 Give four characteristics of concentrate feeds. (2marks)

.....

.....

.....

.....

- 4 (a) what is line breeding? ( ½ mark)

.....

.....

- (b) Give one advantage of line breeding. ( ½ mark)

.....

.....

5 State three ways in which infectious diseases can spread from one animal to another. (1 ½ marks)

.....

.....

.....

6 Give three reasons why docking is carried out in rams. (1 ½ marks)

.....

.....

.....

7 Give four reasons why a young calf must be fed on colostrum during its first few days. (2marks)

.....

.....

.....

.....

8 (a) Name the bacteria that causes brucellosis in cows. (½ mark)

.....

(b) Give two characteristic symptoms of brucellosis in cows. (1mark)

.....

.....

9 State four signs of farrowing. (2marks)

.....

.....

.....

.....

10 Give four symptoms of liver fluke infestation in livestock. (2marks)

.....

.....

.....

.....

11 State four signs of broodiness in a hen. (2marks)

.....

.....

.....

.....

12 Give the function of each of the following parts of the reproductive system of a cow.

(a) Ovaries. ( ½ mark)

.....

(b) Oviduct ( ½ mark)

.....

(c) Cervix ( ½ mark)

.....

13 Give three methods commonly used to extract honey from combs. (1½ marks)

.....

.....

.....

14 Give two advantages of a plunge dip over a spray race. (1mark)

.....

15 Outline four factors considered when siting a apiary. (2 marks)

.....

.....

.....

.....

16 Give four control measures of calf scoring. (2 marks)

.....

.....

.....

.....

17 Name a pig breed that is large, white in colour, with a dished snout and erect ears. ( ½ mark)

.....

.....

18 Name four routine livestock rearing practices used to control parasites and diseases. (2marks)

.....

.....

.....

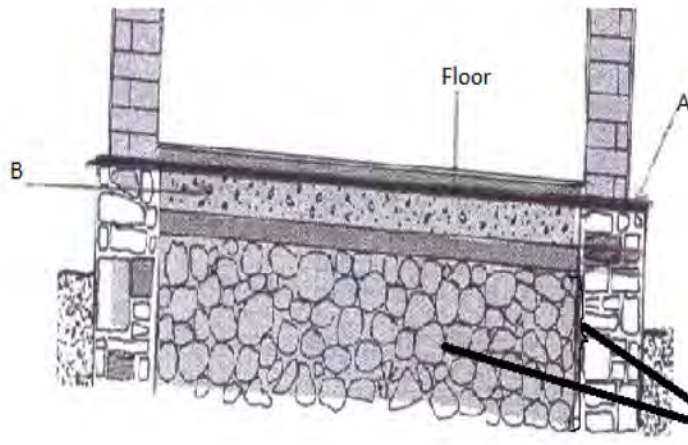
.....

for more free past papers visit: [www.freekcsnapastpapers.com](http://www.freekcsnapastpapers.com)

**SECTION B (20 Marks)**

***Answer all questions in the spaces provided.***

- 19 The diagram below shows the foundation floor of a milking parlor.



- (a) Name the part labeled **A** and **B** in the diagram above. (2marks)

**A**.....

**B**.....

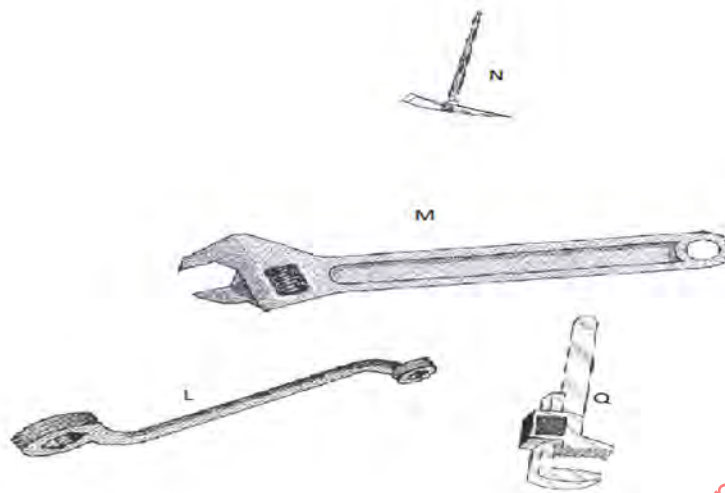
- (b) State the suitable material for the part labeled **B**. (1mark)

.....  
.....

- (c) State the purpose of the part labeled **A** illustrated above. (1mark)

.....  
.....

20 Below are illustrations of farm tools. Study them and answer questions that follow



(a) Identify tools **N** and **Q** illustrated above.

(1mark)

**N**.....

**Q**.....

(b) State one functional difference between **M** and **Q**

(2marks)

**M**.....

**Q**.....

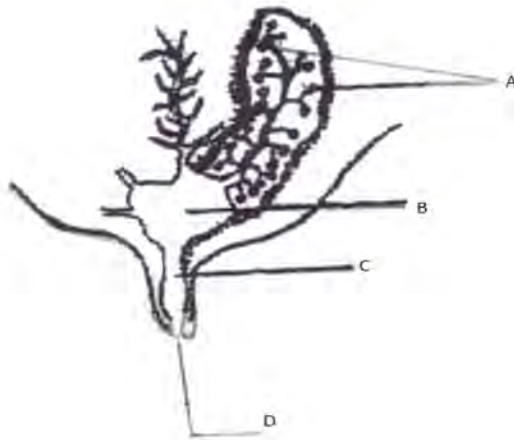
(c) Give one functional advantage of using tool **M** over **L**.

(1mark)

**M**.....

**L**.....

- 21 The illustration below is a structure in a cow. Study it and answer the questions that follow.



- (i) Label the part **A**, **B**, **C** and **D**. (2 marks)

**A**.....

**B**.....

**C**.....

**D**.....

- (ii) List down two factors that may initiate milk letdown in a lactating cow. (2marks)

.....

.....

- (iii) Name one hormone that stimulate milk let down. (1mark)

.....

.....



22 The diagram of a tick below and answer the questions that follow.



(a) (i) Identify the tick. (½ mark)

.....

.....

(ii) Name one cattle disease transmitted by the above species of the tick. (½ mark)

.....

.....

iii) Apart from transmission of diseases, give three effects of ticks on cattle. (3marks)

.....

.....

.....

(b) (i) On the diagram of a cow below indicate by numbers **1 -4** the sites most preferred by ticks.

(2marks)



- (ii) Give four methods used to control ticks in cattle. (2marks)

.....

.....

.....

.....

**SECTION C (40 Marks)**

Answer any **TWO** questions from this section in the spaces provided after each question.

- 23 (a) Describe the procedure of deworming a heifer using drenching gun. (5marks)

.....

.....

.....

.....

.....

.....

.....

.....

.....

.....

.....

.....

- b) Describe five tools/equipment used in barbed wire fencing. (10marks)

.....

.....

.....

.....

.....

.....

.....

- c) Give five disadvantages of a spray race in control of ticks. (5marks)

.....

.....

.....

.....

.....

.....

.....

- 24 (a) Describe Foot and Mouth disease under the following sub headings.

- (i) Two livestock species attacked. (2marks)

.....

.....

- (ii) Causal organism. (1mark)

.....

.....

- (iii) Give four symptoms of attack. (4marks)

.....

.....

.....

(iv) State three control measures of the disease mentioned above.

[illegible]

(10marks)

for more free past papers visit: [www.freekcsd.com](http://www.freekcsd.com)

- 25 a) (i) Explain advantages of water cooled engine compared to air cooled engine. (3marks)

.....

.....

.....

.....

.....

- ii) Explain the functions function of a gear box. (5marks)

.....

.....

.....

.....

.....

.....

.....

.....

.....

- b) Give five functions of water in livestock nutrition. (5 marks)

.....

.....

.....

.....

.....

.....

.....

.....

.....

c) Describe six parts of a zero grazing unit.

(6marks)

.....

.....

.....

.....

.....

.....

.....

.....

.....

.....

for more free past papers visit: [www.freekcsepastpapers.com](http://www.freekcsepastpapers.com)