

NAME: ..... CLASS: ..... ADM. NO. ....  
SIGNATURE: .....  
DATE:.....

**441/2**  
**HOME SCIENCE (CLOTHING CONSTRUCTION)**  
**PAPER 2**  
**PRACTICAL**  
**March/April 2017**  
**Time: 2 ½ hours**

**MOI HIGH SCHOOL KABARAK**  
**FORM FOUR END TERM EXAMINATIONS TERM 1 2017**  
**Kenya Certificate of Secondary Education**  
**HOME SCIENCE**  
**(CLOTHING CONSTRUCTION)**  
**PAPER 2**  
**PRACTICAL**  
**TIME: 2 ½ HOURS**

**Instructions to candidates**

- *This paper consists of 3 printed pages.*
- *Candidates should check the question paper to ascertain that all pages are printed and no questions are missing.*

A pattern of a child's dress is provided. You are advised to study the sketches, instructions and the layout carefully before you begin the test.

### Materials provided

1. Pattern pieces
  - A - Dress Front
  - B - Dress Back
  - C - Back Yoke
  - D - Frill
  - E - Pocket
  - F - Front Neck Facing
  - G - Back Neck facing
2. Embroidery thread
3. Plain light weight cotton fabric 56cm × 90cm.
4. Cotton sewing thread to match the fabric.
5. One large envelope.

### THE TEST

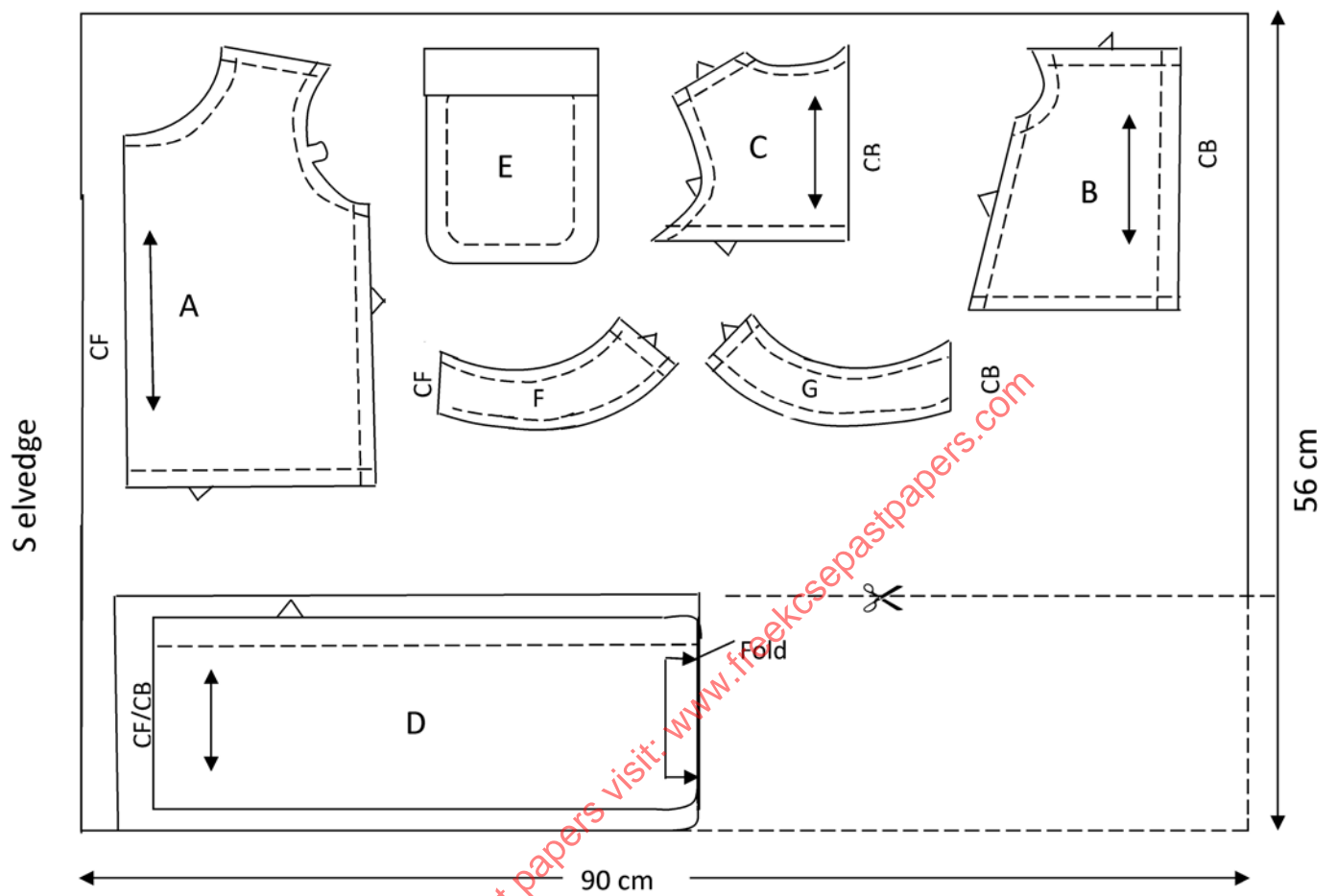
Using the materials provided, cut out and make the **Right half** of the child's dress to show the following processes.

1. Presentation and cutting out (23½ mks)
2. Making the double pointed dart on the front dress. (8mks)
3. Preparation and attachment of the pocket. Hold the pocket hem using herringbone stitches on the right side. (16mks)
4. Joining the yoke to the dress back using plain seam. (8mks)
5. Joining the shoulder seam using machine fell seam. (8mks)
6. Making the side seam using an open seam. (7mks)
7. Preparation and attachment of the frill on the lower side of the dress using an overlaid seam. **(Do not neaten, do not trim and do not remove the gathering stitches).** (8½ mks)
8. i) Joining the back neck facing to front neck facing and neatening of the free edge of the Joint facings. 11Marks
- ii). Using the joined facing to neaten the neckline. }

### NB:

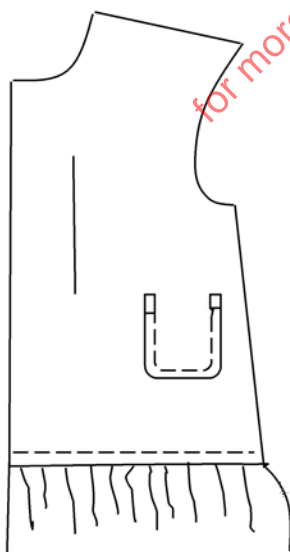
At the end of the examination, firmly sew on to your work, on a single fabric label bearing your name and index number. Remove the needles and pins from your work carefully and place it in the envelope provided. Do not put scraps of fabrics in the envelope.

**LAYOUT - NOT DRAWN TO SCALE**



**VIEW**

Front view



Back view

