

NAME:..... INDEX NO.....  
SCHOOL: ..... CANDIDATE'S SIGN.....  
DATE: ..... CLASS: .....

## MOI HIGH SCHOOL KABARAK AND SACHO

### JUNE 2017 K.C.SE AGRICULTURE PAPER 2

**Time: 2 hours**

#### **INSTRUCTIONS TO CANDIDATES**

- Write your name, index number, school, admission number and class in the spaces provided.
- Sign and write the date in the spaces provided above.
- Answer all the questions in section A and B.
- Answer any two questions in section C.
- Answers should be written in the spaces provided.

#### **FOR EXAMINER'S USE ONLY**

| SECTIONS     | QUESTIONS | MAXIMUM SCORE | CANDIDATES SCORE |
|--------------|-----------|---------------|------------------|
| <b>A</b>     | 1 – 17    | 30            |                  |
| <b>B</b>     | 18 – 21   | 20            |                  |
| <b>C</b>     | 22 – 24   | 40            |                  |
|              |           | 40            |                  |
| <b>TOTAL</b> |           | <b>90</b>     |                  |

## **SECTION A (30 MARKS)**

*Answer ALL questions in the spaces provided*

1. Give **three** qualities that make the merino breed popular. **(1 ½ marks)**

.....

.....

.....

.....

2. Name **four** breeds of rabbits. **(2 marks)**

.....

.....

.....

.....

3. State **three** reasons that a farmer would prefer to use an ox-cart instead of a tractor-drawn trailer. **(2 marks)**

.....

.....

.....

.....

4. State **four** factors that influence the quality of honey. **(2 marks)**

.....

.....

.....

.....

5. Outline **four** management practices that would ensure maximum harvest in a fish pond. **(4 marks)**

.....

.....

.....

.....

6. State **six** factors that may determine the quantity of silage eaten by dairy cows. **(3 marks)**

.....

.....

.....

.....

.....

.....

7. Name **two** predisposing factors to foot rot disease in sheep. **(1 mark)**

.....

.....

8. Give **two** reasons why walls of dairy sheds should be white washed instead of painting with water or oil paints. **(1 mark)**

.....

.....

9. Give **two** reasons why tsetsefly control is considered a land reclamation method. **(1 mark)**

.....

.....

10. (a) What is the immediate host for liver fluke. **(½ mark)**

.....

(b) What is the duration of oestrus cycle in a cow? ( ½ mark)

.....

(c) What term is used to refer to the condition during calving in which the hind legs come out first? ( ½ mark)

.....

11. (a) Give **two** causes of soft shells in eggs. (1 mark)

.....

.....

(b) How should the feeding of bees be supplemented during a dry season? (½ mark)

.....

12. State **four** reasons for keeping livestock healthy. (2 marks)

.....

.....

.....

.....

13. Give **four** qualities of a good ..... (2 marks)

.....

.....

.....

.....

14. State **four** disadvantages of inbreeding in livestock. (2 marks)

.....

.....

.....

.....

.....

15. Outline **four** benefits of steaming-up in livestock.

(2 marks)

.....

.....

.....

.....

16. Name **four** reasons for castrating male calves.

(2 marks)

.....

.....

.....

.....

17. Outline **four** uses of solar energy in a farm.

(2 marks)

.....

.....

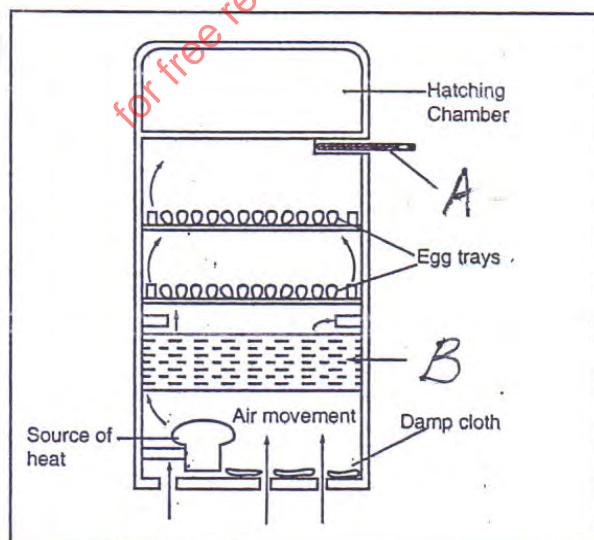
.....

.....

### **SECTION B (20 MARKS)**

*Answer ALL questions in this section in the spaces provided*

18. The following is a diagram of an artificial incubator. Study it and answer questions that follow.



- (a) Identify the following parts shown by letters **A** and **B**. (2 marks)

**A** .....

**B** .....

- (b) State **three** conditions that are necessary for a successful hatching. (3 marks)

.....

.....

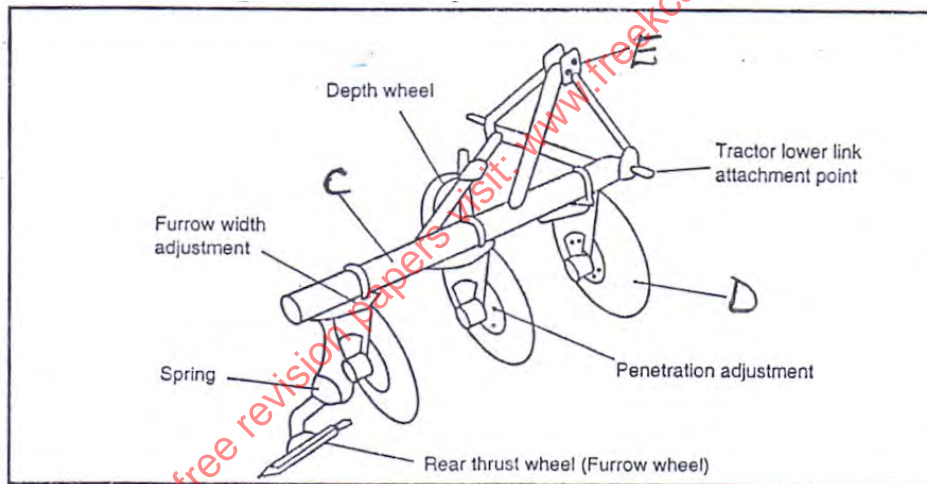
.....

.....

.....

.....

19. Study the following farm implement and answer the questions below.



- (a) Identify the above implement. ( ½ mark)

.....

- (b) Identify the parts shown by letters **C**, **D**, **E**. (1 ½ marks)

**C** .....

**D** .....

**E** .....

(c) Give **three** reasons that make the implement better in land preparation.

(3 marks)

.....

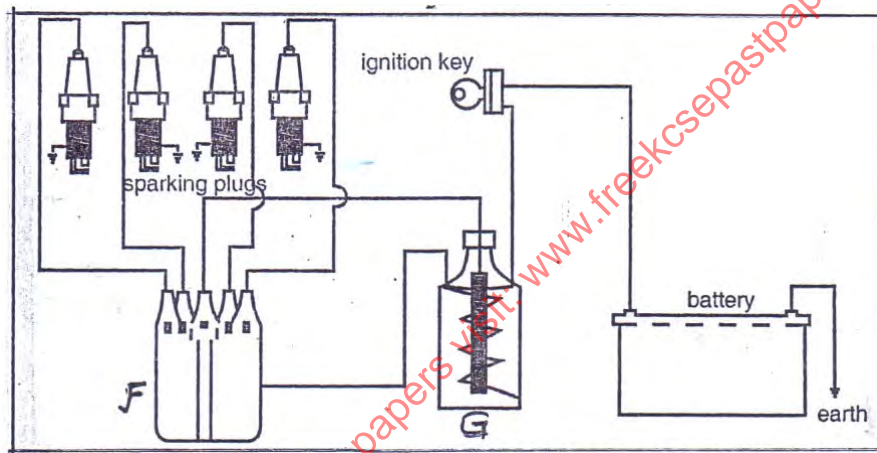
.....

.....

.....

.....

20. The following diagram is a petrol engine of a tractor ignition system, study it and answer the questions that follow.



(a) Identify the following parts **F** and **G**.

(1 mark)

**F** .....

**G** .....

(b) What is the role of part **G**?

(1 mark)

.....

.....

(c) State **three** maintenance that should be done to the tractor battery. (3 marks)

.....

.....

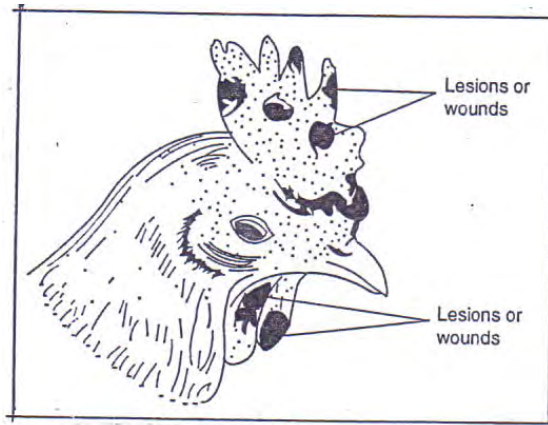
.....

.....

.....

.....

21. Study the following diagram and answer questions below.



(a) Identify the above disease.

(1 mark)

.....

(b) What causes the above disease?

(1 mark)

.....

(c) Give **two** predisposing factors of the disease.

(2 marks)

.....

.....

.....

(d) Give **one** control measure of the disease.

(1 mark)

.....

.....



## SECTION C (40 MARKS)

Answer any **two** questions from this section.

22. (a) Explain **eight** functions you can carry out in a crush. **(8 marks)**

for free revision papers visit: [www.freeksepastpapers.com](http://www.freeksepastpapers.com)

- (b) Describe **six** advantages of rotational grazing. (6 marks)

.....

.....

.....

.....

.....

.....

.....

.....

.....

.....

.....

.....

(c) Describe **six** effects of parasites on livestock.

**(6 marks)**

.....

.....

.....

.....

.....

.....

.....

.....

.....

.....

.....

.....

.....

.....

.....

.....

.....



(b) Explain **five** reasons for maintaining farm tools and equipment. **(5 marks)**

.....

.....

.....

.....

.....

.....

.....

.....

.....

.....

(c) Explain **six** maintenance commonly done to farm tools and equipment. **(6 marks)**

.....

.....

.....

.....

.....

.....

.....

.....

.....

.....

.....

.....

.....

.....

.....



- (b) Explain **five** factors a farmer should consider in the construction of farm structures. **(10 marks)**

for free revision papers visit: [www.freeksepastpapers.com](http://www.freeksepastpapers.com)