

Name: Index No:

Candidate's signature.....

Date.....

Muungano KCSE Trial Exam

441/2

HOME SCIENCE

PAPER 2 (Clothing Construction)

July 2017

2 ½ Hours

This paper consists of 3 printed Pages

*Candidates should check the question paper to ensure that all the pages are printed as indicated
and no questions are missing*

Turn Over

A Pattern of a boy's pair of shorts is provided. You are advised to study the sketches, the sketches, the question paper and the layout before you begin the test.

1. **Materials Provided:**

- A Dress front.
 - B Dress back
 - C Sleeve
 - D Cuff
 - E Pocket
 - F Cuff interfacing
 - G Sleeve opening binding
2. Light weight cotton fabric of 45cm long by 90cm wide.
 3. Cotton sewing thread to match the fabric.
 4. One large envelope

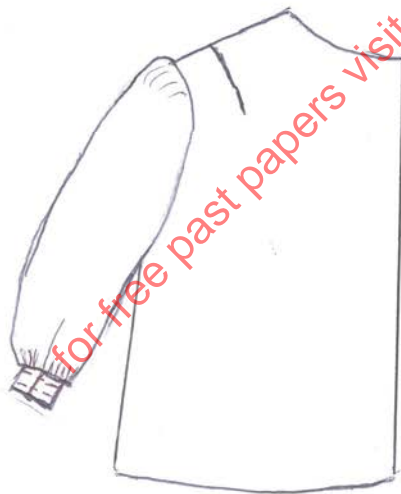
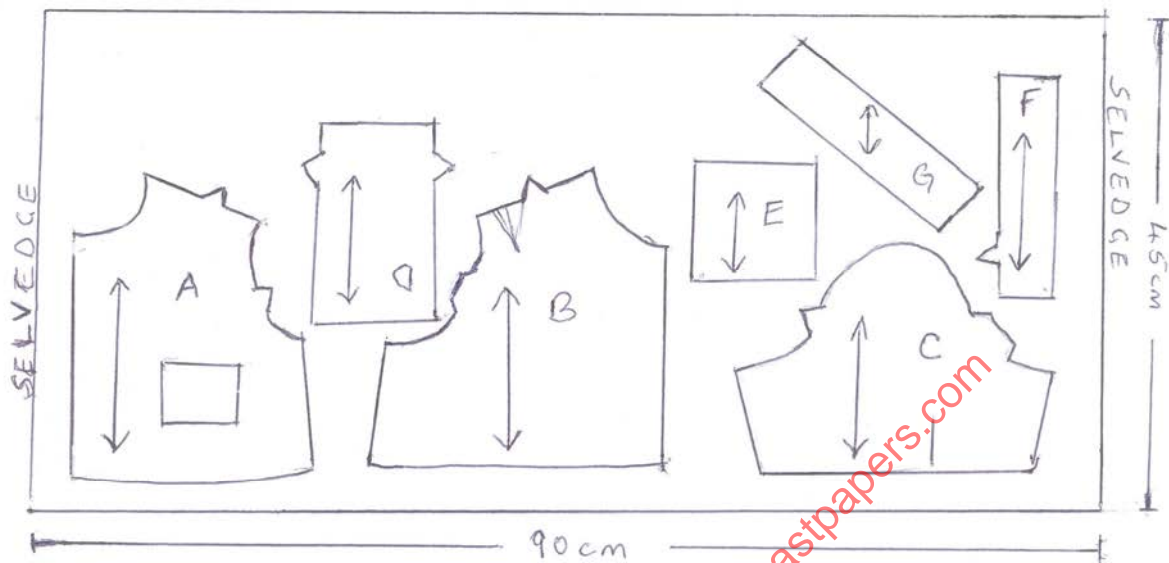
THE TEST

Using the materials provided, cut out and make up the left half of a child's dress to show the following processes:

- a) The laying out of the pattern and the cutting out of fabric. (13½mks)
- b) The making of the shoulder dart. (6½mks)
- c) The preparation and patching of the pocket. (10mks)
- d) The joining of shoulder seam using the machine fell seam. (8½mks)
- e) The joining of side seam using an open seam. (7½mks)
- f) Making a bound opening on the sleeve opening. (6mks)
- g) The joining of the underarm seam using the French seam. (7½mks)
- h) The preparation and the attachment of an interfaced cuff. Top stitch the cuff. (13mks)
- i) The preparation of the sleeve crown and the setting in of the sleeve. **Do not trim the armhole seam.** (8½mks)
- j) Presentation: At the end of the examination, firmly sew onto your work, on single fabric a label bearing your name and index number. Remove the needle and pins from your work. Then fold your work carefully and place it in the envelope provided. (9mks)

DO NOT PUT SCRAPS OF FABRIC IN THE ENVELOPE

THE LAYOUT (NOT DRAWN TO SCALE)



BACK VIEW



FRONT VIEW