

NAME..... ADM NO.....  
SCHOOL..... CANDIDATES SIGN.....  
DATE .....

312  
GEOGRAPHY  
FORM 1  
TIME: 2 ½ HOURS

**END OF TERM (III) EXAMINATION -2019**  
*Kenya Certificate of Secondary Education (K.C.S.E)*

312  
GEOGRAPHY  
FORM 1  
TIME: 2 ½ HOURS

**INSTRUCTIONS TO CANDIDATES**

- Write your Name, Admission number and Name of your school in the spaces provided
- Answer ALL questions in the spaces provided in the question paper
- Write legibly neatly.

*This paper consists of 8 printed pages .  
candidates should check the question to ensure that all pages are printed  
as indicated and no questions are missing.*

SECTION A

1. Define the following terms. (2mks)

i) Environment (2mks)

ii) Ecosystem (2mks)

2. a) What is solar system? (2mks)

b) State four characteristics of the planet earth. (4mks)

3. a) What is weather station? (2mks)

b) State three factors that cause inaccuracy of recording data in a school weather station. (3mks)

for more free revision content visit: [www.freekcsepapers.com](http://www.freekcsepapers.com)

4. a) What is mining? (2mks)

.....  
.....  
.....  
.....

b) Name three categories of minerals. (3mks)

.....  
.....  
.....  
.....

5. a) Describe open cast method of mining. (3mks)

.....  
.....  
.....  
.....

b) State two problems associated with open cast method of mining. (2mks)

.....  
.....  
.....

6. The table below shows a data for temperature and rainfall for a station in meru county.

| Month           | J  | F  | M   | A   | M   | J   | J   | A  | S   | O   | N  | D  |
|-----------------|----|----|-----|-----|-----|-----|-----|----|-----|-----|----|----|
| Rainfall (mm)   | 20 | 40 | 100 | 140 | 280 | 440 | 270 | 70 | 140 | 200 | 80 | 30 |
| Temperature(°C) | 27 | 28 | 28  | 28  | 27  | 25  | 25  | 24 | 25  | 26  | 28 | 26 |

a) i) Calculate the annual temperature range. (2mks)

.....  
.....  
.....

ii) Calculate the mean annual rainfall.

(2mks)

.....

.....

.....

iii) Calculate the median for rainfall.

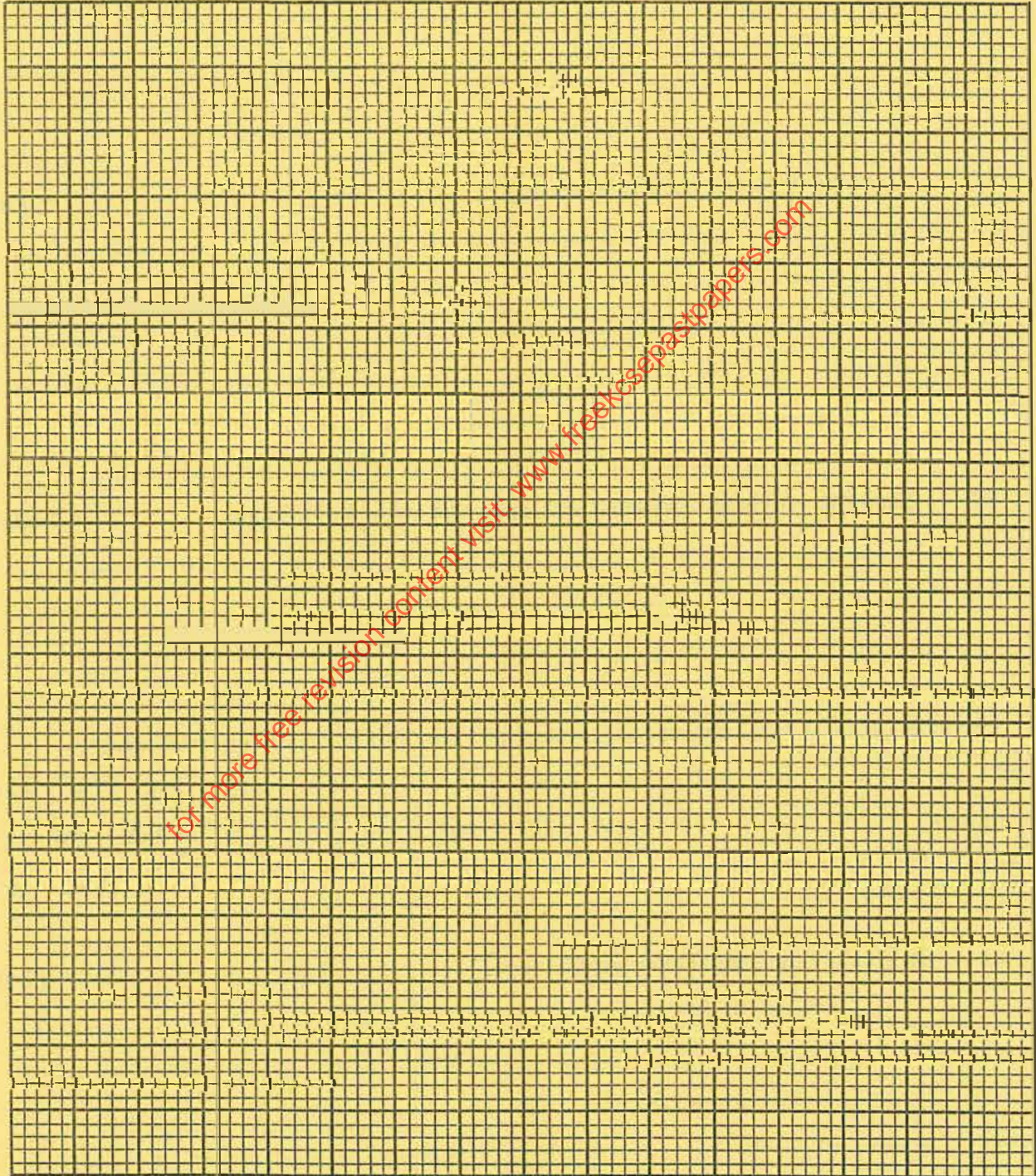
(1mk)

.....

b) i) Using the data provided, draw a combined line and bar graph to represent the above data.

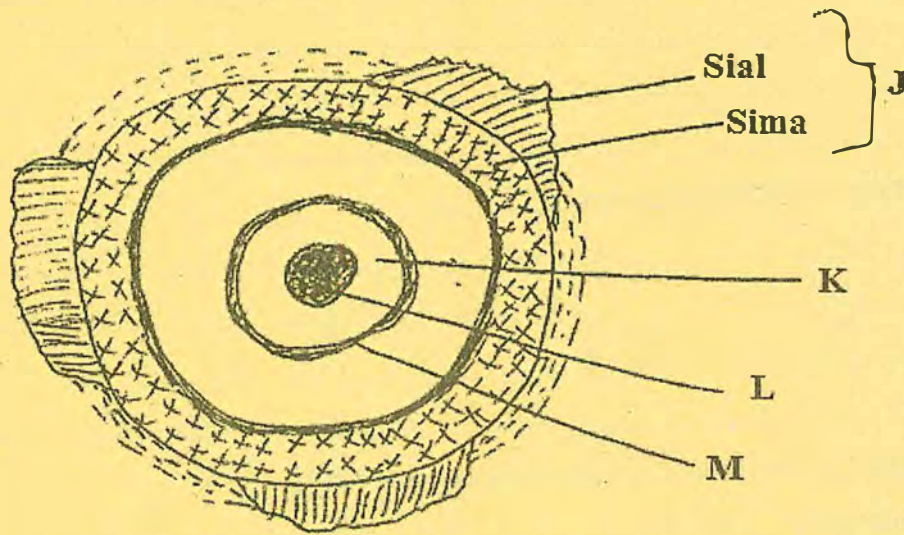
Use a scale of 1cm to represent 50mm and 1cm to represent 10°C.

(7mks)





7. The diagram below represent the structure of the earth.  
Use it to answer the questions that follow.



- a) i) Name the parts labelled J, K L (3mks)

.....

.....

.....

- ii) Name the layer of discontinuity labelled M (1mk)

.....

.....

- b) Describe the characteristics of the sial. (4mks)

- i) What is the international date line? (2mks)

.....

.....

.....

- ii) What is the local time at Hola 40°E when the time at Tema 0° (3mks)

.....

.....

.....

.....

.....

iii) Using a well labelled diagram describe the lunar eclipse.

(6mks)

d) What is the atmosphere?

(2mks)

ii) Name two isothermal layers of the atmosphere.

(2mks)

.....  
.....  
.....  
.....

iii) Give two major components of the atmosphere.

(2mks)

.....  
.....  
.....  
.....

8. i) Differentiate between minerals and Rocks.

(2mks)

.....  
.....  
.....  
.....

ii) Give three examples of plutonic Rocks

(3mks)

.....  
.....  
.....  
.....  
.....

iii) Give two characteristics of igneous rocks.

(2mks)

.....  
.....  
.....  
.....  
.....

