

NAME: CLASS: ADM. NO.
SIGNATURE:
DATE:

441/2
HOME SCIENCE (CLOTHING CONSTRUCTION)
PAPER 2
PRACTICAL
JUNE/JULY 2021
Time: 2 ½ hours

MOKASA 1 JOINT EXAMINATION
Kenya Certificate of Secondary Education
HOME SCIENCE
(CLOTHING CONSTRUCTION)
PAPER 2
PRACTICAL
TIME: 2 ½ HOURS

Instructions to candidates

- *This paper consists of 3 printed pages.*
- *Candidates should check the question paper to ascertain that all pages are printed and no questions are missing.*

A pattern of a girl's dress is provided. You are advised to study the sketches, instructions and layout carefully before you begin the test.

Materials provided

1. Pattern pieces
 - A - Dress Front
 - B - Dress Back
 - C - Yoke
 - D - Pocket
2. Plain light weight cotton fabric 70cm wide by 55cm long.
3. Cotton thread to match the fabric.
4. Embroidery thread 130cm long.
5. A4 Envelope

THE TEST

Using the materials provided, cut out and make up the **LEFT HALF** of the dress to show the following process.

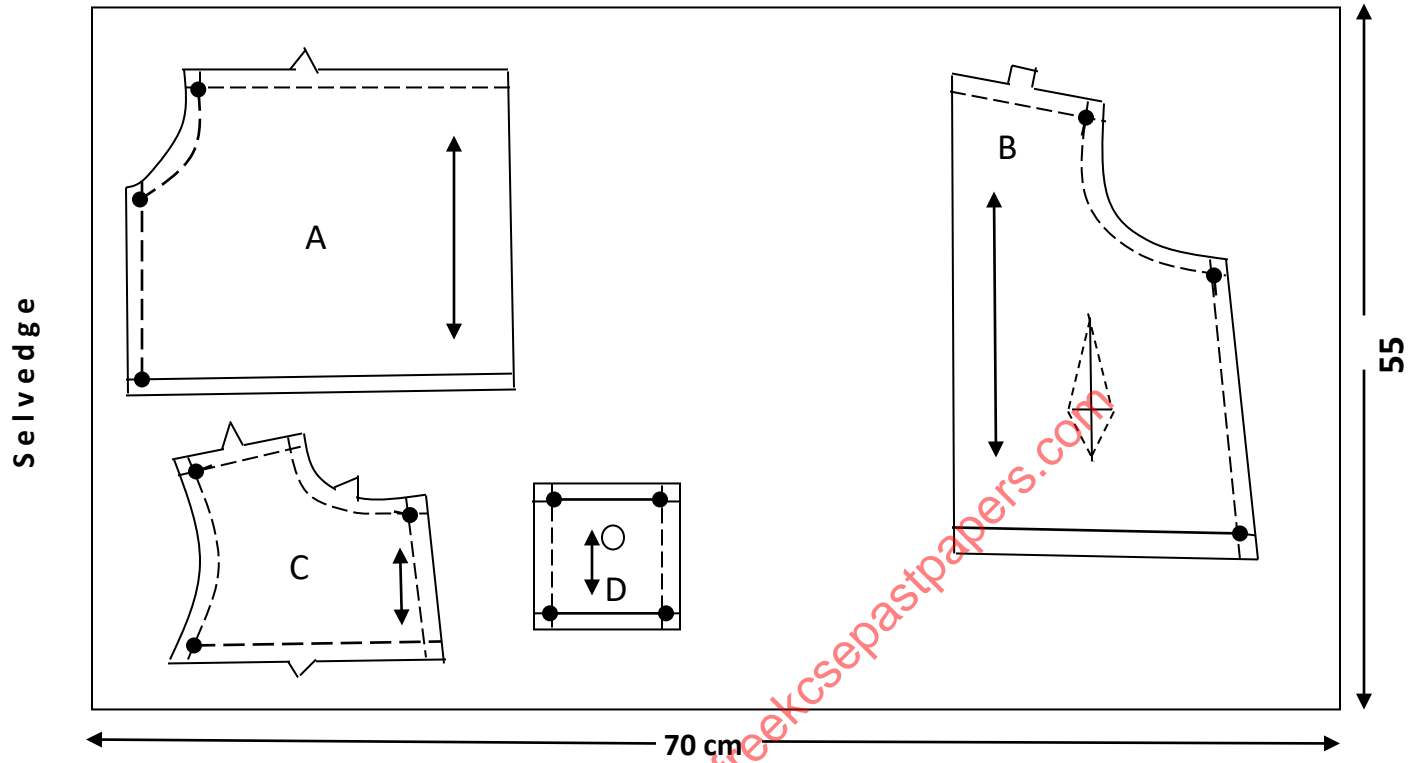
1. Cutting out. **(10mks)**
2. Working of double pointed dart at the dress back. **(10mks)**
3. Preparation and attachment of the patch pocket to include the working of satin stitch to fill "O" on the pocket. **(24mks)**
4. Preparation of gathers on the dress front. **DO NOT REMOVE GATHERING STITCHES. (5mks)**
5. Joining the dress front to the yoke using overlaid seam. **(10¹/₂mks)**
6. Joining the dress front to the dress back at the shoulder using double stitched seam. **(7¹/₂mks)**
7. Working the side seam using an open seam. **(7mks)**
8. Managing the hem on the lower edge of the dress by; **(10mks)**
 - (a) Holding the hem using even tacking. **(DO NOT REMOVE TACKINGS)**
 - (b) Working hemming stitches at the front part of the dress.
9. Presentation. **(6mks)**

NB:

At the end of the examination, firmly sew on your work on single fabric a label bearing your name, class and admission number. Remove the needles, pins and unnecessary threads from your work. Fold your work neatly and place it in the envelope provided.

DO NOT PUT SCRAPS OF FABRIC IN THE ENVELOPE AND DO NOT SEAL THE ENVELOPE.

LAYOUT (NOT DRAWN TO SCALE)



VIEWS

FRONT

BACK

