

Name: Index No:

443/2
AGRICULTURE
PAPER 2
TIME: 2 HOURS

AGRICULTURE PAPER 2

Kenya Certificate of Secondary Education (K.C.S.E)

443/2
Agriculture 2
Paper 2
2 hours

INSTRUCTIONS TO CANDIDATES:

- Write your **name** and **index number** in the spaces provided above.
- **Sign** and **write the date** of examination in the spaces provided
- This paper consists of three section **A, B** and **C**
- Answer all questions in section **B** and **C**
- Answer any two questions in section **C**
- All the questions should be answered in the spaces provided

FOR EXAMINERS USE ONLY

SECTION	QUESTIONS	MAX SCORE	CANDIDATES SCORE
A	1-19	30	
B	20-23	20	
C	24	20	
	25-26	20	
TOTAL		90	

This paper consists of 8 printed pages. Candidates should check to ascertain that all pages are printed as indicated and that no questions are missing.

Answer all questions from this section in the spaces provided after each question.

1. State four predisposing factors of livestock diseases. (2mks)

.....
.....
.....
.....

2. What are the secondary host of the following livestock parasite.
(i) Pork tapeworm (½ mk)

.....

- (ii) Liver fluke (½ mk)

.....

3. State two functions of calcium in animal nutrition. (1mk)

.....
.....

4. State why it is important for a farmer to inject piglets with Iron after birth? (1mk)

.....
.....

5. State four maintenance requirements of a jack plane (2mks)

.....
.....
.....
.....

6. State two reasons why ewes may abandon their lambs. (2mks)

.....
.....
.....
.....

7. Distinguish between cauponisation and embryo transplant as used in livestock breeding. (2mks)

.....
.....
.....
.....

8. State four reasons why the feeding of colostrum is important in the rearing of young livestock. (2mks)

.....
.....
.....
.....

9. State four factors which influence the quality of honey. (2mks)

.....

.....

.....

.....

10. Give any four maintenance practices which are carried on a fish pond. (2mks)

.....

.....

.....

.....

11. State two roles of litter in a deep litter poultry house. (1mk)

.....

.....

12. Name four components of a building truss. (2mks)

.....

.....

.....

.....

13. For a farmer to rear healthy calf he has to consider some factors when designing a calf pen. List four of the factors. (2mks)

.....

.....

.....

.....

14. What is the causal organism for the following diseases.

(i) New castle disease (½ mk)

.....

(ii) Bang’s disease in goats (½ mk)

.....

15. Layers are seriously affected by stress. State four causes of stress in a flock of layers. (2mks)

.....

.....

.....

.....

16. Name two hormones involved in lactogenesis and milk let down. (1mk)

.....

.....

17. State two conditions under which a farmer can only use ox-drawn plough and not tractor drawn implements. (1mk)

.....

.....

18. Give two reasons why a Jersey breed cattle is adapted to arid and semi arid area. (1mk)

.....
.....

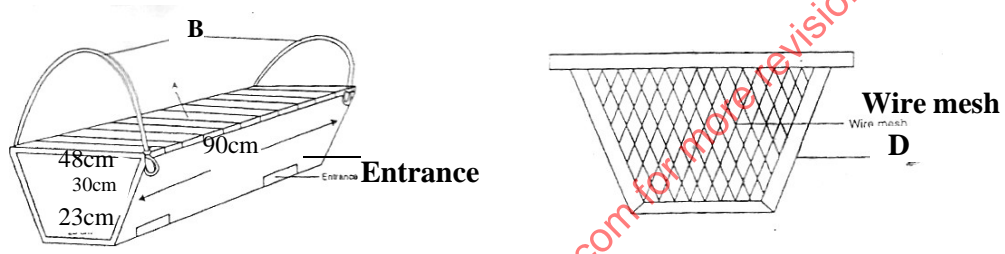
19. State one functional difference between a brace and a hand drill. (2mks)

.....
.....
.....

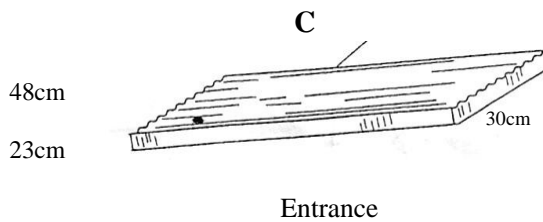
SECTION B (20 MARKS)

Answer all the questions in this section in the spaces provided.

20. Below is an illustration of Kenya Top Bar hive. Study it carefully and answer the questions that follow.



Visit www.freekcsepastpapers.com for more revision content



a. Name the parts labeled **A,B,C** and **D** (2mks)

A.....

B.....

C.....

D.....

b. State the functions of the parts labeled **A** and **D** (1mk)

A:.....

B:.....

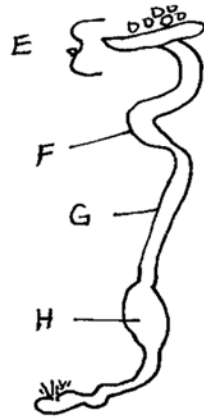
c. Give **two** equipment used during the harvesting of money (1mk)

.....

21. A farmer wanted to prepare a piglet ration with 16% digestible crude protein (DCP) using soybean meal containing 40% DCP and maize meal which contains 8% DCP. Calculate the amount of each ingredients required to prepare 100kg of the piglet ration using a person square method. (4 mks)

Visit www.freeksepastpapers.com for more revision content

22. The diagram below shows the reproductive system of a hen. Study it and answer the following questions.



(a) Name the parts labeled **E, F, G** and **H**

E.....(½ mk)

F.....(½ mk)

G.....(½ mk)

H..... (½ mk)

(b) State **two** changes that occur on the development of the yolk at part labelled **H**. (2mks)

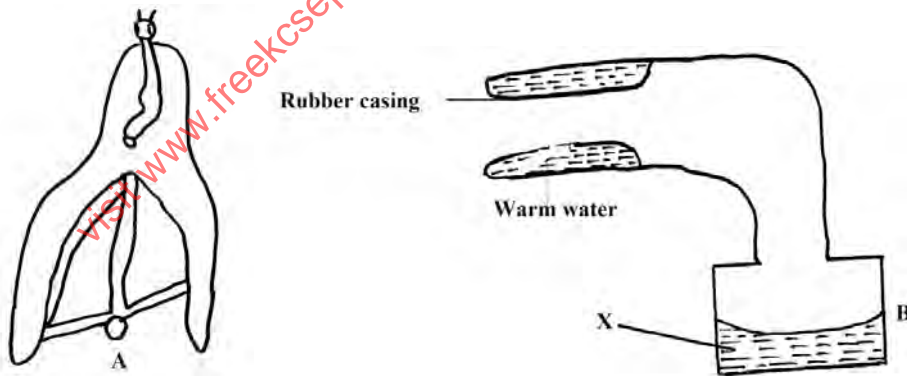
.....

(c) State **one** constituent added to the eggs in each of the parts labeled **F** and **G**. (1mk)

F (1mk)

G (1mk)

23. Diagram A and B below illustrate livestock production tools.



(a) State one function of each. (2mks)

A

B

(b) What is the suitable name of the livestock production equipment B?

(1mk)

.....
.....

(c) State four advantages of using the substance x collected in B above.

(2mks)

.....
.....
.....
.....

SECTION C

Answer any two questions in this section in the spaces provided

24. (a) Describe five management practices a farmer should carry out on a beef calf within the first six hours after birth (5mks)

(b) Describe the digestion of grass in the rumen of an adult ruminant (7mks)

(c) Describe the maintenance practices to be carried out in a cooling system of a tractor (8mks)

25. (a) Discuss East coast fever under the following sub-headings (1mk)

I. Causal organism (6mks)

II. Symptoms of attack (3mks)

III. Control measures

(b) Describe the life cycle of two host tick (6mks)

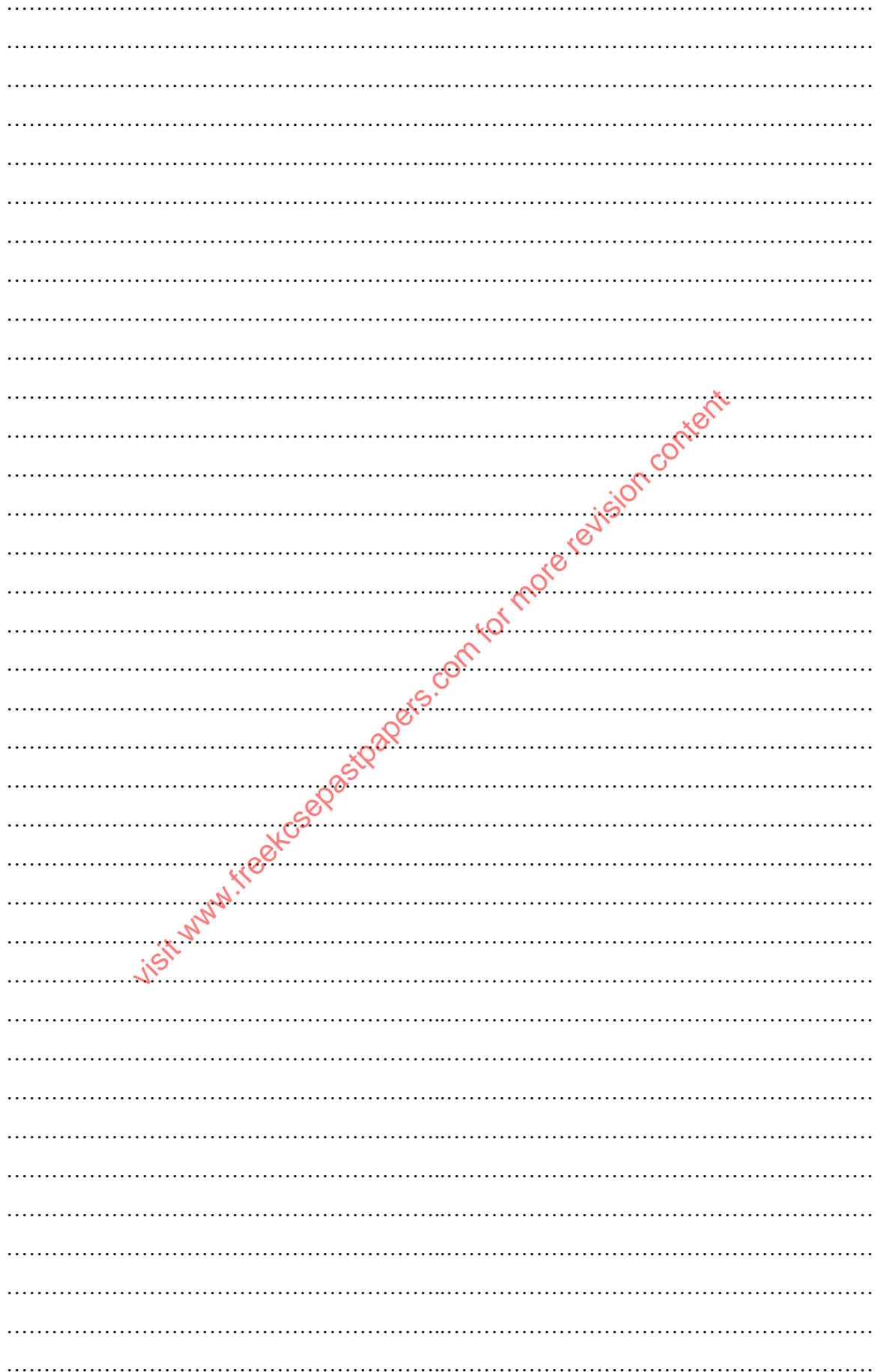
(c) state the limitations of a tractor power in farm mechanization (4mks)

26. (a) Give four advantages of using a four stroke engine over a two stroke engine (4mks)

(b) State and explain five factors that a farmer should consider when constructing farm structures (10mks)

(c) State desirable characteristics which should be considered when selecting a gilt for breeding (6mks)

visit www.freeksepastpapers.com for more revision content



visit www.freeksepastpapers.com for more revision content

A series of horizontal dotted lines for writing.

visit www.freeksepastpapers.com for more revision content

visit www.freeksepastpapers.com for more revision content.