

Name.....

Index No.....

Candidates Signature.....



Date.....

231/3  
BIOLOGY  
Paper 3

(PRACTICAL)

## ALLIANCE GIRLS' HIGH SCHOOL MOCK EXAMINATION

MOCK 2014  
July  
1½ Hours

### INSTRUCTIONS TO CANDIDATES

- Write your name and Index Number in the spaces provided above.
- Answer **ALL** the questions
- You are required to spend the first 15 minutes of the 1 ¾ hours allowed for this paper reading the whole paper carefully before commencing your work.
- Answers must be written in the spaces provided in the question paper.
- Additional pages **must not** be inserted.

**For Examiners use only.**

Question	Maximum Score	Candidates Score
1	14	
2	13	
3	13	
<b>Total</b>	<b>40</b>	

*This paper consists of 7 Printed pages.  
Candidates should check the question paper to ensure that all the  
Papers are printed as indicated and no questions are missing*

1. You are provided with solution Q which is basically artificial urine equivalent to one obtained from a certain patient in a hospital laboratory. You are also provided with a dialysis tubing, a beaker, distilled water, Benedict's solution, 10% sodium hydroxide solution, 1% copper (II) sulphate solution and means of heating.

**Procedure**

- Tie the dialysis tubing provided tightly on one end using the thread and add about 5ml of Q into the tubing using a syringe. Tie tightly on the other end ensuring that there is no leakage. <sup>and rinse it with water on the outside</sup> Place it in a 50 ml/100ml beaker  $\frac{3}{4}$  full of distilled water and allow this to stand for 40 minutes.

Remove the dialysis tubing and draw about 5ml of the solution in the beaker, put it in a test tube and label it G followed by another 5ml from dialysis tubing and put it in another test tube and label it H.

You are required to carry out a diagnostic food test and determine the food components in both substance G and H and fill in the table below.

Substance	Test	Procedure	Observations	Conclusion
G				
H				

(b) Name two conditions that the patient was suffering from. (2 marks)

.....  
.....

(c) (i) What physiological activities took place in the experimental set- up you had put in place? (1 mark)

.....  
.....

(ii) Explain your answer above. (3 marks)

.....  
.....  
.....

For More Free KCSE Past papers Visit [www.freekcsepapers.com](http://www.freekcsepapers.com)

2. You are provided with specimens labeled D in water and E. study them carefully to answer the questions that follow.



specimen D



Specimen E

(i) (a) State the habitat of specimen D. (1 mark)

(ii) (a) State the trophic level occupied by specimen D. (1 mark)

(b) Give a reason for your answer in (a) (ii) above (1 mark)



(iii) Giving reasons, name the **Kingdom** into which specimen **D** belongs and the **Division** into which **E** belongs.

**D - Kingdom**..... (1 mark)

Reasons..... (2 marks)

.....

**E- Division**..... (1 mark)

Reasons..... (2 marks)

.....

(iv) Name part labeled **T, V and W**.

**T**..... (3 mark)

**V**.....

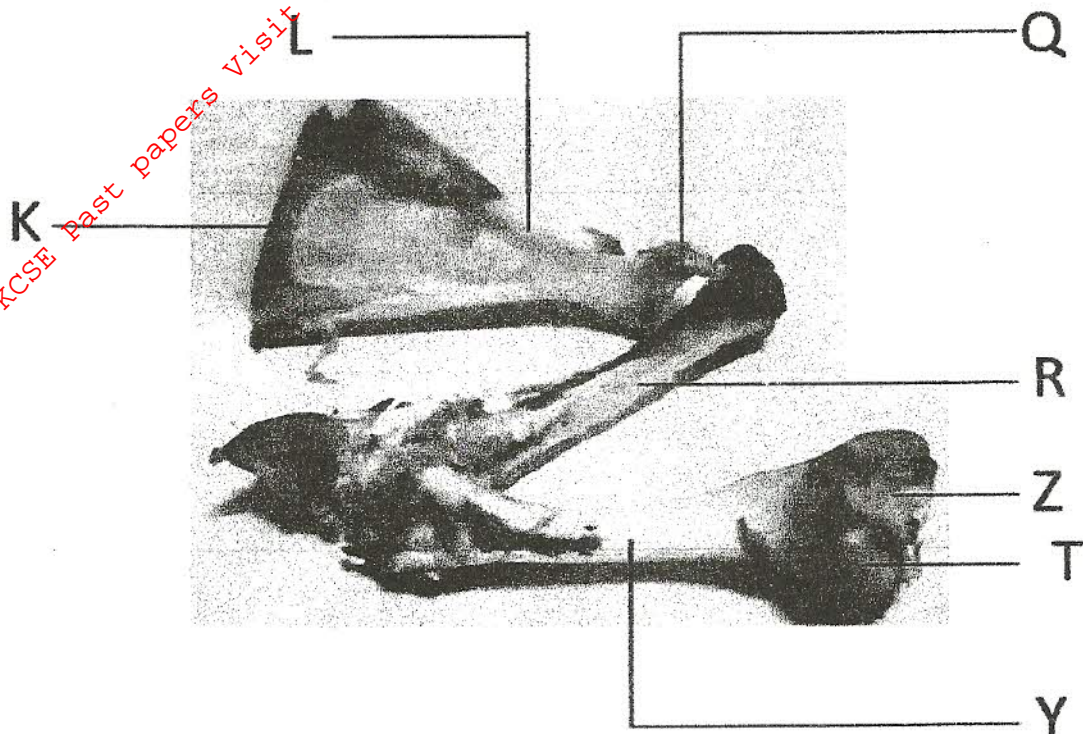
**W**.....

and state the role of part labeled **T**

..... (1 mark)

For More Free KCSE Past papers Visit [www.freekcsepastpapers.com](http://www.freekcsepastpapers.com)

3. You are provided with series of skeletal tissues below. Study them to answer the questions that follow.



(a) From the top, identify the **three** bones. (3 marks)

.....  
.....

(b) Name the parts labeled **K, L, R, T** and **Q**. (5 marks)

**K** .....

**L** .....

**R** .....

**T** .....

**Q** .....

(c) How is part **K** adapted to its function. (1 mark)

.....

(d) Name the joint formed at the distal end and at proximal end of the second bone from the top

(c) How is part K adapted to its function. (1 mark)

.....

(d) Name the joint formed at the distal end and at proximal end of the second bone from the top

Distal end ..... (1 mark)

Proximal end ..... (1 mark)

(e) Estimate the length of bone Y given that the drawing magnification is X 0.25. (2 marks)

.....

.....

For More Free KCSE Past papers Visit [www.Freekcsepapers.com](http://www.Freekcsepapers.com)